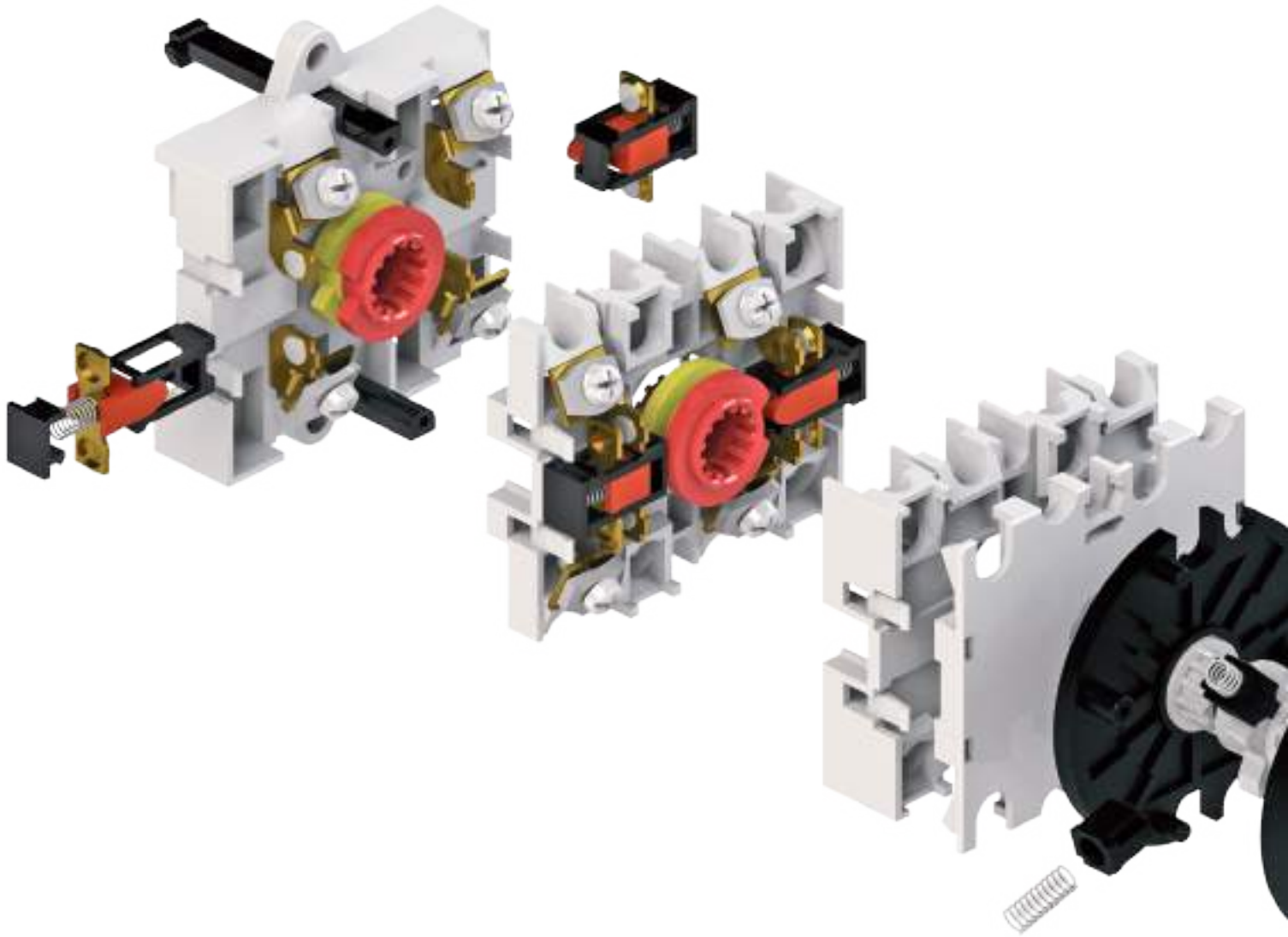


ROTARY CAM SWITCHES GX SERIES



 **Lovato**
electric

ENERGY AND AUTOMATION



SADRŽAJ *CONTENTS*

| | |
|--|-------|
| SADRŽAJ <i>CONTENTS</i> | 1 |
| OPĆENITO <i>GENERAL</i> | 2 |
| TEHNIČKI PODACI <i>TECHNICAL DATA</i> | 3 |
| STANDARDNI OBLICI UGRADNJE <i>STANDARD MOUNTING FORMS</i> | 4 |
| UGRADNE VELIČINE <i>MOUNTING SIZES</i> | 4 |
| MJERNE SKICE <i>DIMENSIONAL DRAWINGS</i> | 5-6 |
| POTVRDE <i>APPROVALS</i> | 6 |
| NARUDŽBENI KOD <i>ORDERING CODE</i> | 7-9 |
| POSEBNE IZVEDBE <i>OPTIONAL EXTRAS</i> | 10-35 |
| REZERVNI DIJELOVI <i>ACCESSORIES</i> | 36-37 |
| PODLOGE <i>ESCUTCHEON PLATES</i> | 38-40 |
| PREGLED POSEBNIH IZVEDBI PO STRANICAMA <i>OPTIONAL EXTRAS - REVIEW</i> | 44 |
| NARUDŽBENI LIST ZA SPECIJALNE SKLOPKE <i>ORDER SHEET FOR SPECIAL SWITCHES</i> | 45 |





GREBENASTE SKLOPKE serije GX

Grebenaste sklopke GX serije pripadaju novoj seriji grebenastih sklopki sa zaštitom od slučajnih dodira (svi priključci i kratkospojnice) – DIN/EN61140. Konstruirane su prema najsuvremenijim principima i dostignućima na području sklopnih aparata uz uporabu najkvalitetnijih izolacijskih i kontaktnih materijala. Odlikuju se visokim sklopnim moćima, električnom i mehaničkom trajnošću kao i malim dimenzijama.

Grebenaste sklopke imaju višestruku primjenu za sklopanje u glavnim i pomoćnim strujnim krugovima:

- kao motorske sklopke mogu pogonski sigurno sklapati, upravljati i pokretati trofazne i jednofazne motore, a mogu se izvesti kao: preklopka zvijezda - trokut, preklopka za reverziranje, preklopka za motore sa više brzina itd.
- u pomoćnim strujnim krugovima sastavljaju se prema željenom programu sklopanja: sklopke za komandne, signalne i mjerne krugove
- sklopke, preklopke i stepenaste sklopke npr. za transformatore i aparate za zavarivanje
- grupne sklopke npr. za sklopanje otpornika i grijača
- zakretna tipkala s automatskim povratom

Sklopke mogu imati najviše 12 upravljačkih položaja i 12 sklopnih elemenata (24 kontakta), a mogu se izvesti s kutem zakreta od 30°, 45°, 60° i 90°.

Kod sklopki s povećanim momentom prekreta (veliki broj elemenata sa specifičnim programom sklopanja, tipkala s većim brojem kontakata) u cilju sigurnijeg rada koriste se sklopke (samo ugradbene izvedbe) s većim razdjelnim uređajima koje imaju **oznaku B** (npr. GX20B).

Kod sklopki gdje se traži prednji sklop veći od standardnog, sklopke imaju **oznaku H** (npr. GX20H).

Ako se sklopke koriste za napone niže od 24V i male struje reda mA, u uvjetima prašnjave i agresivne atmosfere, tada se mogu izraditi sa pozlaćenim kontaktima.

Sklopke se mogu koristiti pri temperaturama okoline od - 25°C do + 55°C. Osim standardnih izvedbi U, O, P, sklopke mogu biti isporučene sa čitavim nizom posebnih izvedbi te kao takve mogu ispuniti sve zahtjeve u najsloženijim postrojenjima i uređajima.

Grebenaste sklopke serije GX udovoljavaju mnogim internacionalnim i nacionalnim propisima kao što su:

IEC 60947, IEC 60204, DIN EN 61058, UL 508, C 22.2 No. 14 itd.

ROTARY CAM SWITCHES series GX

Rotary cam switches series GX is the new series of rotary cam switches protected from inadvertent touch (all connections and jumpers) – DIN/EN61140. They have been designed on modern principles taking into consideration the latest achievements in the field of switching devices and using the best insulation and contact materials.

Their advantages are: high making and breaking capacities, electrical and mechanical endurance and small dimensions.

The rotary cam switches are intended for multiple switching operations in main as well as in auxiliary circuits:

- *as motor switches they are designed for direct-online starting and stopping of single-phase and three-phase motors. They also come out as star-delta switches, reversing switches, pole-change over motor switches*
- *in auxiliary circuits they are assembled in compliance with the switching program according to preference: switches for control, signalling and measuring circuits:*
- *switches, selector switches and step switches e.g. for transformers and welding apparatuses*
- *group switches e.g. for switching operations of resistors and heaters*
- *control switch with automatic return*

The rotary cam switches can have 12 control positions and 12 switching elements (24 contacts) maximum and can be made with turning angle of 30°, 45°, 60° and 90°.

*At the switches with the increased turn-over moment (large number of elements with specific switching diagram, switch with automatic return with larger number of contacts), due to more reliable operation, the switches (only front mounting) with the bigger distribution device, **marked with B**, are used (e.g. GX20B).*

*At the switches where is front part bigger than standard size required, the switches are **marked with H** (e.g. GX20H).*

When the switches are used at lower voltages than 24 V and currents of mA in dusty and aggressive environment, the contacts can be gold-plated. The switches can be used at the environment temperature from - 25°C to + 55°C.

Besides the standard mounting forms U, O, P, the switches are available with a large number of optional extras and they comply with all requirements in the most complicated plants and devices.

*Rotary cam switches series GX comply with many international and national standards such as: **IEC 60947, IEC 60204, DIN EN 61058, UL 508, C 22.2 No. 14** and many others.*

| TIP SKLOPKE SWITCH TYPE | | | | GX16 GX16H | GX20 GX20H | GX32 GX32H | GX40 GX40H |
|--|-------|---------------|---|----------------------------------|--|---|--|
| Nazivni izolacijski napon <i>Rated insulation voltage</i> | 1) | U_i | IEC/VDE/BS UL/CSA | V V | 690 600 | 690 600 | 690 600 |
| Nazivni udarni podnosivi napon <i>Rated impulse withstand voltage</i> | | U_{imp} | IEC-60947 (III/3) | kV | 6 | 6 | 6 |
| Nazivna termička struja <i>Rated thermal current</i> | | I_{th} | IEC/VDE/BS UL/CSA | A A | 16 12 | 20 15 | 32 32 |
| Glavna sklopka IEC-60947 (III/3) 1) | | | Najveća vrijednost nazivnog pogonskog napona <i>Max. value of rated operational voltage</i> Nazivni udarni podnosivi napon <i>Rated impulse withstand voltage</i> | V kV | 440 4 | 440 4 | 440 4 |
| Max. veličina osigurača za zaštitu od kratkog spoja <i>Max. fuse size for short circuit protection</i> | | I_n (gG/gL) | 10 kA 25 kA | A A | 16 16 | 20 16 | 35 35 |
| Nazivna kratkotrajno podnosiva struja <i>Rated short-time withstand current</i> | | I_{cw} | 1 sec | A | 250 | 250 | 1000 |
| Nazivna pogonska struja <i>Rated operational current</i> | | I_e | AC1/AC21A IEC/VDE/BS 110 V AC15 220/230 V IEC/VDE 380/400 V 660/690 V | A A A A A | 16 10 8 4 1,5 | 20 10 8 6 1,5 | 32 25 20 10 2 |
| Motorska sklopka za kategoriju upotrebe | AC3 | | IEC/VDE/BS 220/230 V 3 faze 380-440 V 3 phase 500-690 V | kW kW kW | 3,5 4,5 5,5 | 3,7 5,5 5,5 | 7,5 11 11 |
| Motor switch in utilization category | | | 1 faza, 2 pola 120 V 1 phase, 2 pole 220/230 V 380-440 V | kW kW kW | - 1,5 2,2 | - 1,8 3 | 1,8 3,5 5,5 |
| | AC23 | | IEC/VDE/BS 220/230 V 3 faze 380-440 V 3 phase 500-690 V 1 faza, 2 pola 120 V 1 phase, 2 pole 220/230 V 380-440 V | kW kW kW kW kW kW | 3,7 6,5 7,5 - 1,8 3 | 4 7,5 7,5 - 2,2 3,5 | 8 15 15 2,2 3,5 6 |
| Motorska sklopka Motor switch | DOL | | UL/CSA 120 V 3 faze 240 V 3 phase 480 V 600 V | HP HP HP HP | 1,5 3 5 5 | 1,5 3 5 5 | 3 7,5 15 15 |
| Prekidanje kod istosmjerne struje <i>DC Switching capacity</i> | DC21A | T=1 ms | 48 V Nazivna struja 60 V <i>Rated current</i> I_e 110 V 220 V za 1 kontakt 440 V for 1 contact | A A A A A A | 16 16 4 0,6 0,25 | 20 20 4 0,6 0,25 | 32 32 5 0,8 0,25 |
| | DC23 | T=15 ms | 24 V Nazivna struja 48 V <i>Rated current</i> , I_e 60 V (Broj kontakata u seriji) (Number of series contacts) 110 V 220 V | A A A A A | 16 ¹⁾ 16 ²⁾ 16 ³⁾ 10 ³⁾ 10 ⁴⁾ | 20 ¹⁾ 20 ²⁾ 20 ³⁾ 10 ³⁾ 8 ⁴⁾ | 32 ¹⁾ 32 ²⁾ 32 ³⁾ 15 ³⁾ 12 ⁴⁾ |
| | DC13 | T=50 ms | 48 V Nazivna struja 60 V <i>Rated current</i> I_e 110 V za 1 kontakt 220 V for 1 contact 440 V | A A A A A | 14 10 1 0,4 0,15 | 16 12 1 0,4 0,15 | 25 14 3 0,5 0,15 |
| Mehanička trajnost <i>Mechanical durability</i> | | | Broj uklopa <i>Switching cycles</i> | | 1x10 ⁶ | 1x10 ⁶ | 1x10 ⁶ |
| Priključni vijak <i>Terminal screw</i> | | | | M | 3 | 3 | 4 |
| Presjek vodiča <i>Conductor size</i> | | | max. r/f | 2x $\frac{mm^2}{AWG}$ | 2,5/2,5 12/12 | 2,5/2,5 12/12 | 10/6 8/10 |
| | | | r = kruti, višezilni / rigid f = finožičani / flexible min. r/f | 2x $\frac{mm^2}{AWG}$ | 0,5/0,5 20/20 | 0,5/0,5 20/20 | 1,5/1,5 16/16 |

1) vrijedi za mreže sa uzemljenim zvjezdištem, prenaponska kategorija III, stupanj zagađenja 3

1) valid for neutral earthed systems, overvoltage category III, pollution degree 3.

STANDARDNI OBLICI UGRADNJE *STANDARD MOUNTING FORMS*

| Oblik ugradnje <i>Mounting form</i> | Oznaka <i>Marking</i> | Zaštita <i>Protection</i> | | Tip <i>Type</i> | Veličina <i>Size</i> | Izgled <i>Outlook</i> |
|---|--------------------------|---------------------------|------------------------------|----------------------------------|-------------------------|--------------------------|
| | | Prednja <i>Front</i> | Stražnja <i>Rear</i> | | | |
| Ugradna sklopka <i>Front mounting</i> | U | IP 40 | IP 20 | GX16 GX20 GX32 GX40 | A0 A0 A1 A1 | |
| Ugradna sklopka s većim prednjim sklopom <i>Front mounting with the bigger front part i.e. mounting size</i> | U | IP 40 | IP 20 | GX16H GX20H GX32H GX40H | A1 A1 A2 A2 | |
| Sklopka za odvojenu ugradnju <i>Rear mounting</i> | O | IP 40 | IP 20 | GX16 GX20 GX32 GX40 | A0 A0 A1 A1 | |
| Sklopka za odvojenu ugradnju s većim prednjim sklopom <i>Rear mounting with the bigger front part i.e. mounting size</i> | O | IP 40 | IP 20 | GX16H GX20H GX32H GX40H | A1 A1 A2 A2 | |
| Sklopka u plastičnom kućištu <i>Switch in plastic casing</i> | P | | IP65 IP65 IP65 IP65 | GX16 GX20 GX32 GX40 | | |

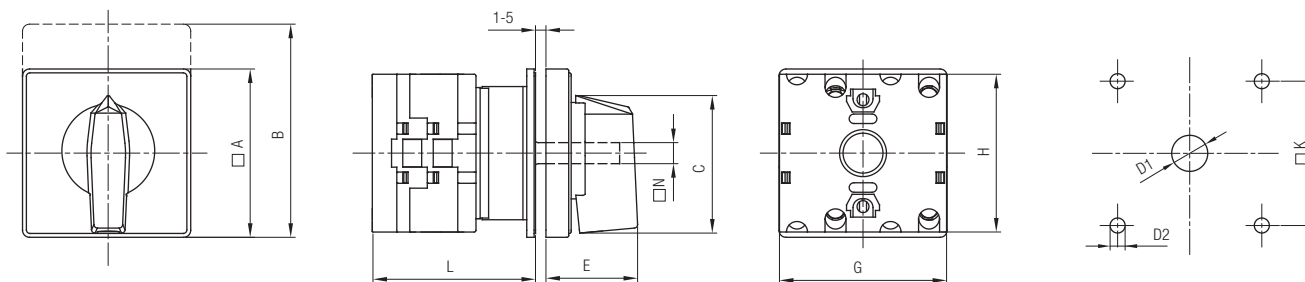
UGRADNE VELIČINE *MOUNTING SIZES*

| A0 | A1 | A2 |
|----------------------|--|------------------------|
| GX16 GX20 | GX32 GX40 GX16H GX20H | GX32H GX40H |

MJERNE SKICE *DIMENSIONAL DRAWINGS* (mm)

U - Ugradna sklopka *Front mounting*

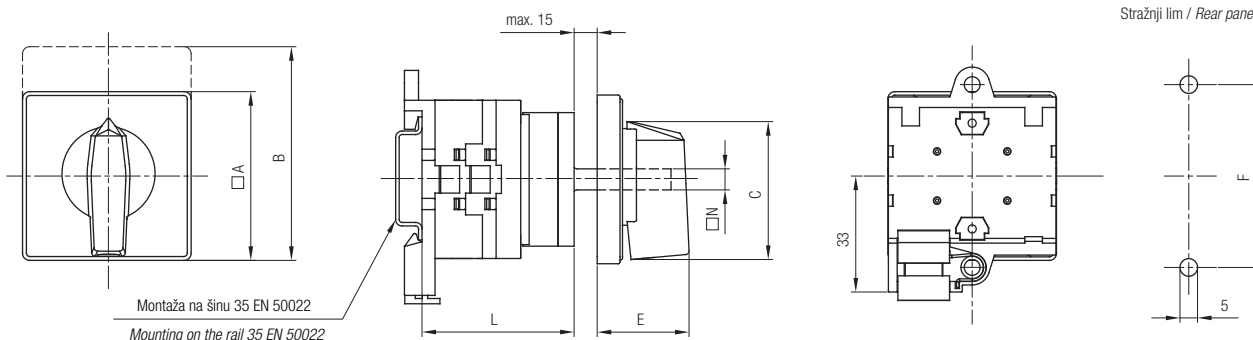
Plan bušenja / *Drilling plan*
Prednji lim / *Front panel*



| Tip/Type | Oznaka / <i>Marking</i> | | | | | | | | | | Broj elemenata <i>L</i> / <i>Number of elements</i> | | | | | | | | | | | |
|----------|-------------------------|-----|------|-----|-----|------|------|----|----|----|---|------|------|------|------|------|------|------|-------|-------|-------|-------|
| | □A | B | C | ∅D1 | ∅D2 | E | G | H | □K | □N | 1 | 2 | 3 | 4 | 5 | 6 | 7 | 8 | 9 | 10 | 11 | 12 |
| GX16 | 48 | 60 | 39,5 | 12 | 5 | 26,5 | 47,7 | 45 | 36 | 6 | 40 | 48,5 | 57 | 65,5 | 74 | 82,5 | 91 | 99,5 | 108 | 116,5 | 125 | 133,5 |
| GX16H | 65 | 80 | 53 | 12 | 5 | 34,5 | 47,7 | 45 | 48 | 6 | 40,5 | 49 | 57,5 | 66 | 74,5 | 83 | 91,5 | 100 | 108,5 | 117 | 125,5 | 134 |
| GX20 | 48 | 60 | 39,5 | 12 | 5 | 26,5 | 47,7 | 45 | 36 | 6 | 40 | 48,5 | 57 | 65,5 | 74 | 82,5 | 91 | 99,5 | 108 | 116,5 | 125 | 133,5 |
| GX20H | 65 | 80 | 53 | 12 | 5 | 34,5 | 47,7 | 45 | 48 | 6 | 40,5 | 49 | 57,5 | 66 | 74,5 | 83 | 91,5 | 100 | 108,5 | 117 | 125,5 | 134 |
| GX32 | 65 | 80 | 53 | 14 | 5 | 34,5 | 66 | 58 | 48 | 7 | 48 | 60 | 72 | 84 | 96 | 108 | 120 | 132 | 144 | 156 | 168 | 180 |
| GX32H | 90 | 110 | 70,5 | 14 | 6 | 41,5 | 66 | 58 | 68 | 7 | 50 | 62 | 74 | 86 | 98 | 110 | 122 | 134 | 146 | 158 | 170 | 182 |
| GX40 | 65 | 80 | 53 | 14 | 5 | 34,5 | 66 | 58 | 48 | 7 | 48 | 60 | 72 | 84 | 96 | 108 | 120 | 132 | 144 | 156 | 168 | 180 |
| GX40H | 90 | 110 | 70,5 | 14 | 6 | 41,5 | 66 | 58 | 68 | 7 | 50 | 62 | 74 | 86 | 98 | 110 | 122 | 134 | 146 | 158 | 170 | 182 |

O - Sklopka za odvojenu ugradnju *Rear mounting*

Plan bušenja / *Drilling plan*
Stražnji lim / *Rear panel*



*Plan bušenja prednje ploče kao kod ugradne sklopke (U)
*Drilling plan of front panel as at front mounting switch (U)

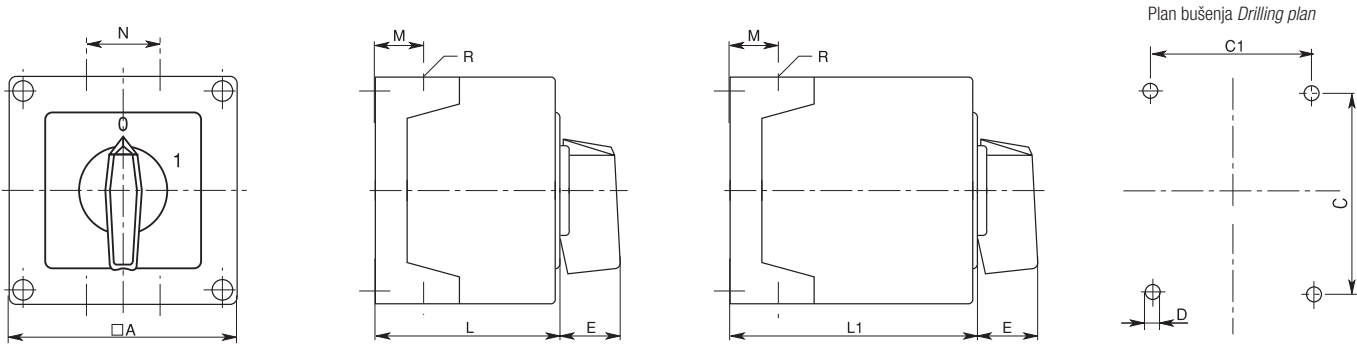
| Tip/Type | Oznaka / <i>Marking</i> | | | | | | | Broj elemenata <i>L</i> / <i>Number of elements</i> | | | | | | | | | | | |
|----------|-------------------------|-----|------|------|----|----|----|---|----|------|----|------|-----|------|-----|-------|-----|-------|--|
| | □A | B | C | E | F | □N | 1 | 2 | 3 | 4 | 5 | 6 | 7 | 8 | 9 | 10 | 11 | 12 | |
| GX16 | 48 | 60 | 39,5 | 26,5 | 52 | 6 | 37 | 45,5 | 54 | 62,5 | 71 | 79,5 | 88 | 96,5 | 105 | 113,5 | 122 | 130,5 | |
| GX16H | 65 | 80 | 53 | 34,5 | 52 | 6 | 37 | 45,5 | 54 | 62,5 | 71 | 79,5 | 88 | 96,5 | 105 | 113,5 | 122 | 130,5 | |
| GX20 | 48 | 60 | 39,5 | 26,5 | 52 | 6 | 37 | 45,5 | 54 | 62,5 | 71 | 79,5 | 88 | 96,5 | 105 | 113,5 | 122 | 130,5 | |
| GX20H | 65 | 80 | 53 | 34,5 | 52 | 6 | 37 | 45,5 | 54 | 62,5 | 71 | 79,5 | 88 | 96,5 | 105 | 113,5 | 122 | 130,5 | |
| GX32 | 65 | 80 | 53 | 34,5 | 68 | 7 | 48 | 60 | 72 | 84 | 96 | 108 | 120 | 132 | 144 | 156 | 168 | 180 | |
| GX32H | 90 | 110 | 70,5 | 41,5 | 68 | 7 | 48 | 60 | 72 | 84 | 96 | 108 | 120 | 132 | 144 | 156 | 168 | 180 | |
| GX40 | 65 | 80 | 53 | 34,5 | 68 | 7 | 48 | 60 | 72 | 84 | 96 | 108 | 120 | 132 | 144 | 156 | 168 | 180 | |
| GX40H | 90 | 110 | 70,5 | 41,5 | 68 | 7 | 48 | 60 | 72 | 84 | 96 | 108 | 120 | 132 | 144 | 156 | 168 | 180 | |

B - Sklopka s većim razdjelnim uređajem *Switch with bigger locating device*

| Tip/Type | Broj elemenata <i>L</i> / <i>Number of elements</i> | | | | | | | | | | | |
|-----------|---|------|------|------|-------|-------|-------|-------|-------|-------|-------|-------|
| | 1 | 2 | 3 | 4 | 5 | 6 | 7 | 8 | 9 | 10 | 11 | 12 |
| GX16B - U | 46,7 | 55,2 | 63,7 | 72,2 | 80,7 | 89,2 | 97,7 | 106,2 | 114,7 | 123,2 | 131,7 | 140,2 |
| GX20B - U | 46,7 | 55,2 | 63,7 | 72,2 | 80,7 | 89,2 | 97,7 | 106,2 | 114,7 | 123,2 | 131,7 | 140,2 |
| GX32B - U | 58,4 | 70,4 | 82,4 | 94,5 | 106,4 | 118,4 | 130,4 | 142,4 | 154,4 | 166,4 | 178,4 | 190,4 |
| GX40B - U | 58,4 | 70,4 | 82,4 | 94,4 | 106,4 | 118,4 | 130,4 | 142,4 | 154,4 | 166,4 | 178,4 | 190,4 |

MJERNE SKICE *DIMENSIONAL DRAWINGS* (mm)

P - SKLOPKA U PLASTIČNOM KUĆIŠTU *SWITCH IN PLASTIC CASING*



| Tip/Type | Tip kućišta Housing size | Broj elemenata Number of elements | | A | C | C1 | D | E | M | N | L | L1 | Zaštita Protection | Uvodnice Conduit entries | |
|----------------------------|-----------------------------|--------------------------------------|-----|-----|------|----|-----|----|----|------|------|-------|-----------------------|-----------------------------|-------------------|
| | | L | L1 | | | | | | | | | | | R(Pg) | R(M...x1,5) |
| GX16 GX20 | 90x90 | 1-2 | 3-5 | 90 | 79 | 63 | 4,5 | 25 | 19 | 30 | 71,3 | 98,3 | IP65 | 4xPg16 | ili / or 4xM20 |
| GX16 GX20 | 110x110 | 1-3 | 4-7 | 110 | 98,4 | 83 | 4,5 | 32 | 21 | 39,5 | 85,5 | 119,5 | IP65 | 4xPg21 | ili / or 4XM25 |
| GX32 GX40 | | 1-2 | 3-4 | | | | | | | | | | | | |

POTVRDE *APPROVALS*

| ZEMLJA LAND | ZNAK SYMBOL | GX16 | GX20 | GX32 | GX40 |
|--------------------------|----------------|-------------------------------------|-------------------------------------|-------------------------------------|-------------------------------------|
| USA / Canada | | <input checked="" type="checkbox"/> | <input checked="" type="checkbox"/> | <input checked="" type="checkbox"/> | <input checked="" type="checkbox"/> |
| Nizozemska Netherland | | <input checked="" type="checkbox"/> | <input checked="" type="checkbox"/> | <input checked="" type="checkbox"/> | <input checked="" type="checkbox"/> |
| Rusija Russia | | <input checked="" type="checkbox"/> | <input checked="" type="checkbox"/> | <input checked="" type="checkbox"/> | <input checked="" type="checkbox"/> |

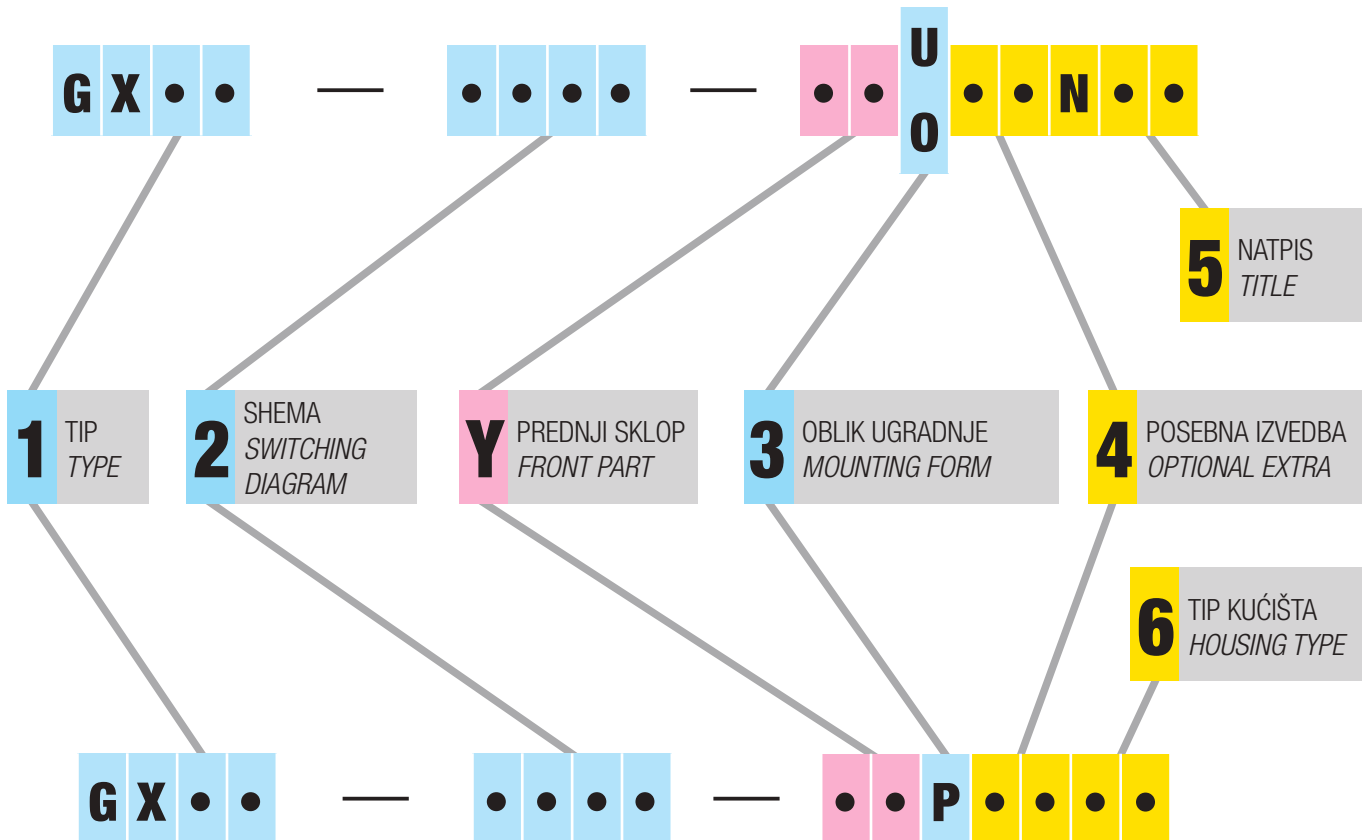
NARUDŽBENI KOD *ORDERING CODE*

Prilikom naručivanja sklopke potrebno je definirati:

- za **standardnu izvedbu** sklopke 3 tipa podataka **1 2 3**
- za sklopke s **posebnom izvedbom** maksimalno 5 tipova podataka **1 2 3 4 5** ili **1 2 3 4 6**
- za sklopku sa **specijalnim zahtjevima** maksimalno 6 tipova podataka **1 2 3 4 5 Y** ili **1 2 3 4 6 Y**

When ordering please define:

- for **standard** switch three data types **1 2 3**
- for switch with an **optional extra** max. 5 data types **1 2 3 4 5** or **1 2 3 4 6**
- for switch with **special requests** max. 6 data types **1 2 3 4 5 Y** or **1 2 3 4 6 Y**



OPIS

DESCRIPTION

| | | |
|----------|--|--|
| 1 | Tip sklopke. Odabire se prema tehničkim zahtjevima (vidi str. 3) i ugradbenoj veličini (vidi stranu 4) | Switch type. To be chosen in accordance with the technical requests (see page 3) and mounting size (see page 4) |
| 2 | Shema. Odabire se prema programu sklapanja (vidi katalog shema 74002) | Switching diagram. To be chosen in accordance with the switching program (see catalogue with scheme 74002) |
| Y | Prednji sklop. Upisuje se samo ako se traži nestandardna kombinacija boja i oblika prednjeg sklopa (vidi str. 8) | Front part. To be marked only when non-standard front part colour and form combination is required (see page 8) |
| 3 | Standardni oblici ugradnje (vidi str. 4) | Standard mounting forms (see page 4) |
| 4 | Upisuje se ako se traži posebna izvedba (vidi str. 10 - 35) | To be marked when an optional extra is required (see pages 10 - 35) |
| 5 | "N" se upisuje ako se traži prednja ploča s natpisom (vidi str. 38) | "N" is to be written when the front plate with a title is required (see page 38) |
| 6 | Upisuje se ako se traži nestandardna izvedba plastičnog kućišta (vidi str. 9) | To be marked when a non-standard plastic casing version is required (see page 9) |

Y - PREDNJI SKLOP *FRONT PART*

Tablice prikazuju moguće kombinacije boja prednjeg sklopa i pripadajuće kodne oznake. Prva linija odnosi se na **standardnu** kombinaciju za koju nije potrebno upisivati kod.

The tables show possible front part colour combinations and corresponding codes to be marked. The first line refers to the **standard** combination for which no code is to be marked.

1. OBLIK UGRADNJE:

Ugradna sklopka (U) ili sklopka za odvojenu ugradnju (O).

1. MOUNTING FORM:

Front mounting (U) or rear mounting (O).

| | | | | KOD / CODE | | | |
|-------------------------|-------------------------------------|----------------------------------|------------------------|------------|------------------------------------|---|--|
| Ručica <i>Handle</i> | Prednja ploča <i>Front plate</i> | Podloga <i>Escutch. plate</i> | Tekst <i>Text</i> | Y | Prednji sklop <i>Front part</i> | 3 | Oblik ugradnje <i>Mounting form</i> |
| crna <i>black</i> | crna <i>black</i> | bijela <i>white</i> | crna <i>black</i> | | | | |
| crna <i>black</i> | crna <i>black</i> | srebrna <i>silver</i> | crna <i>black</i> | | 10 | | U ili / or O |
| crna <i>black</i> | crna <i>black</i> | crna <i>black</i> | bijela <i>white</i> | | 20 | | |
| siva <i>grey</i> | siva <i>grey</i> | crna <i>black</i> | bijela <i>white</i> | | 30 | | |
| siva <i>grey</i> | siva <i>grey</i> | bijela <i>white</i> | crna <i>black</i> | | 40 | | |

PRIMJER: Za sklopku GX20, shema 100, standardna kombinacija boja, ugradna sklopka, narudžbena oznaka glasi:

EXAMPLE: For switch GX20, switching diagram 100, standard colour combination, front mounting, the ordering code is:

GX20 - 100 - U

Ista sklopka, ali sa sivom ručicom, sivom prednjom pločom, bijelom podlogom i crnim tekstom ima narudžbenu oznaku:

The same switch but with grey handle, grey front plate, white escutcheon plate, black text, has the ordering code:

GX20 - 100 - 40 U

NAPOMENA: za specijalne izvedbe 06, 06D, 41/42, 41D, 48/48D, 56, 71/72, 76/77, 85 i 87 kombinacije boja su opisane u poglavlju POSEBNE IZVEDBE

REMARK: for optional extras 06, 06D, 41/42, 41D, 48/48D, 56, 71/72, 76/77, 85 and 87 combination of colours are described in the head OPTIONAL EXTRAS

2. OBLIK UGRADNJE:

Sklopka u plastičnom kućištu (P)

2. MOUNTING FORM:

Switch in plastic casing (P)

| | | | | KOD / CODE | | | |
|--------------------------|-------------------------|----------------------------------|------------------------|------------|------------------------------------|---|--|
| Kućište <i>Casing</i> | Ručica <i>Handle</i> | Podloga <i>Escutch. plate</i> | Tekst <i>Text</i> | Y | Prednji sklop <i>Front part</i> | 3 | Oblik ugradnje <i>Mounting form</i> |
| siva <i>grey</i> | crna <i>black</i> | bijela <i>white</i> | crna <i>black</i> | | | | |
| siva <i>grey</i> | crna <i>black</i> | srebrna <i>silver</i> | crna <i>black</i> | | 10 | | P |
| siva <i>grey</i> | siva <i>grey</i> | crna <i>black</i> | bijela <i>white</i> | | 20 | | |
| siva <i>grey</i> | siva <i>grey</i> | bijela <i>white</i> | crna <i>black</i> | | 30 | | |

PRIMJER: Za sklopku GX20, shema 100, standardna kombinacija boja, u plastičnom kućištu, narudžbena oznaka glasi:

EXAMPLE: For switch GX20, switching diagram 100, standard colour combination, in plastic casing, the ordering code is:

GX20 - 100 - P

Ista sklopka, ali sa sivom ručicom, bijelom podlogom i crnim tekstom ima narudžbenu oznaku:

The same switch but with grey handle, white escutcheon plate, black text, has the ordering code:

GX20 - 100 - 30 P

NAPOMENA: za specijalne izvedbe 06, 23, 25, 56, 73 i 75 kombinacije boja su opisane u poglavlju POSEBNE IZVEDBE

REMARK: for optional extras 06, 23, 25, 56, 73 and 75 combination of colours are described in the head OPTIONAL EXTRAS

IZBOR PLASTIČNOG KUĆIŠTA *PLASTIC CASING SELECTION*

| | | | KOD / CODE | | |
|--|------------------------------|------------------------------------|------------|--------------------------------------|-----------------------------------|
| Tip kućišta (mm) <i>Casing size</i> | Zaštita <i>Protection</i> | Uvodnice <i>Conduit entries</i> | 6 | Vrsta kućišta <i>Housing type</i> | Tip sklopke <i>Switch type</i> |
| 90x90 | IP65 | 4xPg16 | | | GX16/GX20 |
| | IP65 | 4xM20x1,5 | | C2 | GX16/GX20 |
| 110x110 | IP65 | 4xPg21 | | | GX32/GX40 |
| | IP65 | 4xPg21 | | E1 | GX16/GX20 |
| | IP65 | 4xM25x1,5 | | E2 | GX16/GX20/GX32/GX40 |

PRIMJER: Za sklopku GX20, shema 100, standardna kombinacija boja, plastično kućište 90 x 90, sa standardnom zaštitom i ulaznicama, narudžbena oznaka glasi:

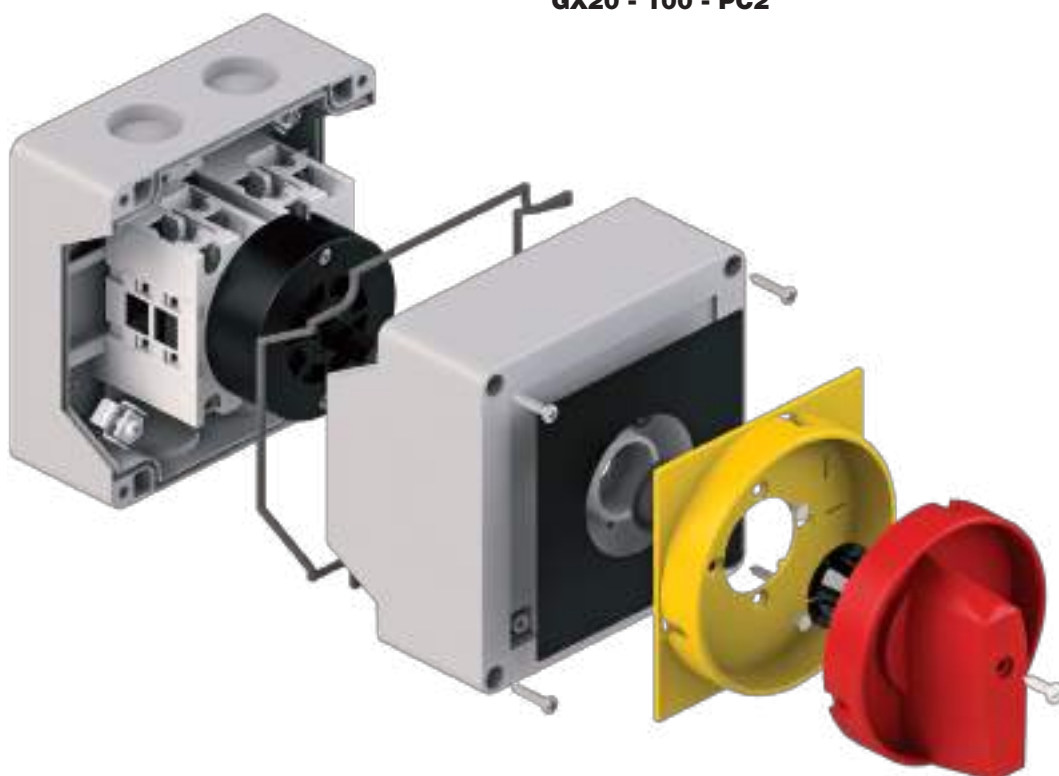
EXAMPLE: For the switch GX20 switching diagram 100, standard colour combination, plastic casing 90 x 90, with standard protection and conduit entries, the ordering code is:

GX20 - 100 - P

Ista sklopka u istom kućištu ali sa ulaznicama 4 x M20 x 1,5 ima narudžbenu oznaku:

The same switch in the same casing but with conduit entries 4 x M20 x 1,5 has the ordering code:

GX20 - 100 - PC2



POSEBNE IZVEDBE *OPTIONAL EXTRAS*

KOD *CODE*

POVEĆANI STUPANJ ZAŠTITE
INCREASED PROTECTION DEGREE



51

Zaštita sprijeda IP65
Front protection IP65

| | | | |
|-------|-------|---|----|
| GX16 | | U | 51 |
| GX16H | | U | 51 |
| GX20 | | U | 51 |
| GX20H | | U | 51 |
| GX32 | | U | 51 |
| GX32H | | U | 51 |
| GX40 | | U | 51 |
| GX40H | | U | 51 |

| | | | |
|-------|-------|---|----|
| GX16 | | O | 51 |
| GX16H | | O | 51 |
| GX20 | | O | 51 |
| GX20H | | O | 51 |
| GX32 | | O | 51 |
| GX32H | | O | 51 |
| GX40 | | O | 51 |
| GX40H | | O | 51 |

SKLOPKA ZA NUŽNO ISKLAPANJE
EMERGENCY OFF SWITCH



24

Standardna sklopka sa žutom prednjom pločom,
žutom podlogom i crvenom ručicom.

*Standard switch with yellow front plate, yellow
escutcheon plate and red handle.*

| | | | |
|-------|-------|---|----|
| GX16 | | U | 24 |
| GX16H | | U | 24 |
| GX20 | | U | 24 |
| GX20H | | U | 24 |
| GX32 | | U | 24 |
| GX32H | | U | 24 |
| GX40 | | U | 24 |
| GX40H | | U | 24 |

| | | | |
|-------|-------|---|----|
| GX16 | | O | 24 |
| GX16H | | O | 24 |
| GX20 | | O | 24 |
| GX20H | | O | 24 |
| GX32 | | O | 24 |
| GX32H | | O | 24 |
| GX40 | | O | 24 |
| GX40H | | O | 24 |

GLAVNA SKLOPKA
MAIN SWITCH

GLAVNA SKLOPKA UJEDNO I SKLOPKA ZA NUŽNO ISKLAPANJE
MAIN SWITCH WITH EMERGENCY



23
25

Zaključavanje samo u "0".
Zaštita od slučajnog dodira dovodnih priključnih stezaljki
pod naponom.
Kut zakreta 60° i 90°.

*Locking only in "0".
Protection against an accidental contact with the
supplying terminals under voltage.
Switching angle 60° and 90°.*



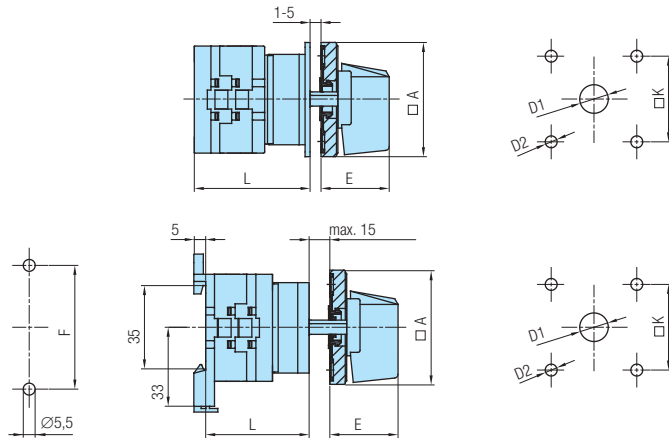
| | | | | |
|-------|-------|---|----|----|
| GX16 | | U | 23 | 25 |
| GX16H | | U | 23 | 25 |
| GX20 | | U | 23 | 25 |
| GX20H | | U | 23 | 25 |
| GX32 | | U | 23 | 25 |
| GX32H | | U | 23 | 25 |
| GX40 | | U | 23 | 25 |
| GX40H | | U | 23 | 25 |

| | | | | |
|-------|-------|---|----|----|
| GX16 | | O | 23 | 25 |
| GX16H | | O | 23 | 25 |
| GX20 | | O | 23 | 25 |
| GX20H | | O | 23 | 25 |
| GX32 | | O | 23 | 25 |
| GX32H | | O | 23 | 25 |
| GX40 | | O | 23 | 25 |
| GX40H | | O | 23 | 25 |

MJERNE SKICE *DIMENSIONAL DRAWINGS* (mm)

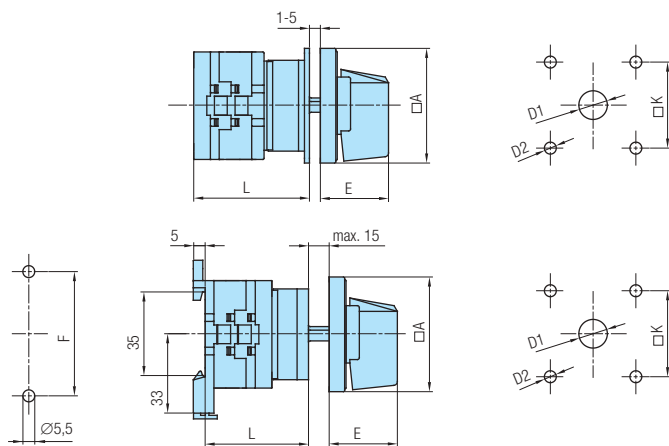
Plan bušenja / *Drilling plan*
Stražnji lim / *Rear panel*

Plan bušenja / *Drilling plan*
Prednji lim / *Front panel*



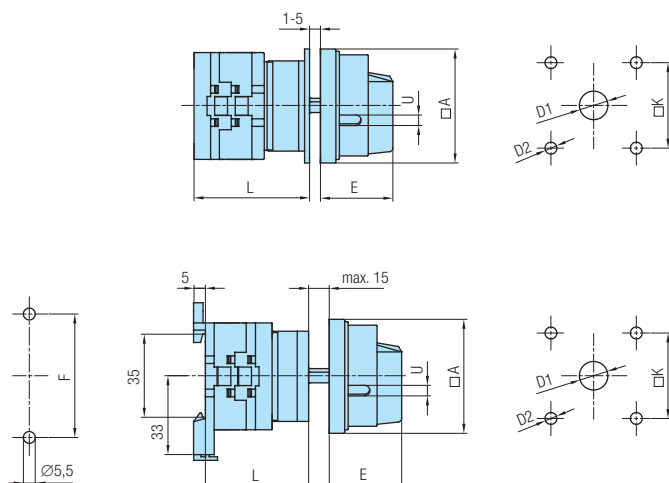
| Tip Type | Oznaka / Marking | | | | | L | | | |
|----------|------------------|----|----|------|----|------|------|----------|-------|
| | □A | D1 | D2 | E | □K | 1 | 2 | 3.....12 | |
| GX 16 | 48 | 12 | 5 | 26,5 | 36 | 40 | 48,5 | 57 | 133,5 |
| GX 16H | 65 | 12 | 5 | 34,5 | 48 | 40,5 | 49 | 57,5 | 134 |
| GX 20 | 48 | 12 | 5 | 26,5 | 36 | 40 | 48,5 | 57 | 133,5 |
| GX 20H | 65 | 12 | 5 | 34,5 | 48 | 40,5 | 49 | 57,5 | 134 |
| GX 32 | 65 | 14 | 5 | 34,5 | 48 | 48 | 60 | 72 | 180 |
| GX 32H | 90 | 14 | 6 | 41,5 | 68 | 50 | 62 | 74 | 182 |
| GX 40 | 65 | 14 | 5 | 34,5 | 48 | 48 | 60 | 72 | 180 |
| GX 40H | 90 | 14 | 6 | 41,5 | 68 | 50 | 62 | 74 | 182 |

| Tip Type | Oznaka / Marking | | | | | | L | | | |
|----------|------------------|----|----|------|----|----|----|------|----------|-------|
| | □A | D1 | D2 | E | F | □K | 1 | 2 | 3.....12 | |
| GX 16 | 48 | 12 | 5 | 26,5 | 52 | 36 | 37 | 45,5 | 54 | 130,5 |
| GX 16H | 65 | 12 | 5 | 34,5 | 52 | 48 | 37 | 45,5 | 54 | 130,5 |
| GX 20 | 48 | 12 | 5 | 26,5 | 52 | 36 | 37 | 45,5 | 54 | 130,5 |
| GX 20H | 65 | 12 | 5 | 34,5 | 52 | 48 | 37 | 45,5 | 54 | 130,5 |
| GX 32 | 65 | 14 | 5 | 34,5 | 68 | 48 | 48 | 60 | 72 | 180 |
| GX 32H | 90 | 14 | 6 | 41,5 | 68 | 68 | 48 | 60 | 72 | 180 |
| GX 40 | 65 | 14 | 5 | 34,5 | 68 | 48 | 48 | 60 | 72 | 180 |
| GX 40H | 90 | 14 | 6 | 41,5 | 68 | 68 | 48 | 60 | 72 | 180 |



| Tip Type | Oznaka / Marking | | | | | L | | | |
|----------|------------------|----|----|------|----|------|------|----------|-------|
| | □A | D1 | D2 | E | □K | 1 | 2 | 3.....12 | |
| GX 16 | 48 | 12 | 5 | 26,5 | 36 | 40 | 48,5 | 57 | 133,5 |
| GX 16H | 65 | 12 | 5 | 34,5 | 48 | 40,5 | 49 | 57,5 | 134 |
| GX 20 | 48 | 12 | 5 | 26,5 | 36 | 40 | 48,5 | 57 | 133,5 |
| GX 20H | 65 | 12 | 5 | 34,5 | 48 | 40,5 | 49 | 57,5 | 134 |
| GX 32 | 65 | 14 | 5 | 34,5 | 48 | 48 | 60 | 72 | 180 |
| GX 32H | 90 | 14 | 6 | 41,5 | 68 | 50 | 62 | 74 | 182 |
| GX 40 | 65 | 14 | 5 | 34,5 | 48 | 48 | 60 | 72 | 180 |
| GX 40H | 90 | 14 | 6 | 41,5 | 68 | 50 | 62 | 74 | 182 |

| Tip Type | Oznaka / Marking | | | | | | L | | | |
|----------|------------------|----|----|------|----|----|----|------|----------|-------|
| | □A | D1 | D2 | E | F | □K | 1 | 2 | 3.....12 | |
| GX 16 | 48 | 12 | 5 | 26,5 | 52 | 36 | 37 | 45,5 | 54 | 130,5 |
| GX 16H | 65 | 12 | 5 | 34,5 | 52 | 48 | 37 | 45,5 | 54 | 130,5 |
| GX 20 | 48 | 12 | 5 | 26,5 | 52 | 36 | 37 | 45,5 | 54 | 130,5 |
| GX 20H | 65 | 12 | 5 | 34,5 | 52 | 48 | 37 | 45,5 | 54 | 130,5 |
| GX 32 | 65 | 14 | 5 | 34,5 | 68 | 48 | 48 | 60 | 72 | 180 |
| GX 32H | 90 | 14 | 6 | 41,5 | 68 | 68 | 48 | 60 | 72 | 180 |
| GX 40 | 65 | 14 | 5 | 34,5 | 68 | 48 | 48 | 60 | 72 | 180 |
| GX 40H | 90 | 14 | 6 | 41,5 | 68 | 68 | 48 | 60 | 72 | 180 |



| Tip Type | Oznaka / Marking | | | | | | L | | | |
|----------|------------------|----|----|------|---|----|------|------|----------|-------|
| | □A | D1 | D2 | E | U | □K | 1 | 2 | 3.....12 | |
| GX 16 | 48 | 12 | 5 | 34,2 | 5 | 36 | 40 | 48,5 | 57 | 133,5 |
| GX 16H | 65 | 12 | 5 | 38 | 6 | 48 | 40,5 | 49 | 57,5 | 134 |
| GX 20 | 48 | 12 | 5 | 34,2 | 5 | 36 | 40 | 48,5 | 57 | 133,5 |
| GX 20H | 65 | 12 | 5 | 38 | 6 | 48 | 40,5 | 49 | 57,5 | 134 |
| GX 32 | 65 | 14 | 5 | 38 | 6 | 48 | 48 | 60 | 72 | 180 |
| GX 32H | 90 | 14 | 6 | 49 | 7 | 68 | 50 | 62 | 74 | 182 |
| GX 40 | 65 | 14 | 5 | 38 | 6 | 48 | 48 | 60 | 72 | 180 |
| GX 40H | 90 | 14 | 6 | 49 | 7 | 68 | 50 | 62 | 74 | 182 |

| Tip Type | Oznaka / Marking | | | | | | L | | | | |
|----------|------------------|----|----|------|----|---|----|----|------|----------|-------|
| | □A | D1 | D2 | E | F | U | □K | 1 | 2 | 3.....12 | |
| GX 16 | 48 | 12 | 5 | 34,2 | 52 | 5 | 36 | 37 | 45,5 | 54 | 130,5 |
| GX 16H | 65 | 12 | 5 | 38 | 52 | 6 | 48 | 37 | 45,5 | 54 | 130,5 |
| GX 20 | 48 | 12 | 5 | 34,2 | 52 | 5 | 36 | 37 | 45,5 | 54 | 130,5 |
| GX 20H | 65 | 12 | 5 | 38 | 52 | 6 | 48 | 37 | 45,5 | 54 | 130,5 |
| GX 32 | 65 | 14 | 5 | 38 | 68 | 6 | 48 | 48 | 60 | 72 | 180 |
| GX 32H | 90 | 14 | 6 | 49 | 68 | 7 | 68 | 48 | 60 | 72 | 180 |
| GX 40 | 65 | 14 | 5 | 38 | 68 | 6 | 48 | 48 | 60 | 72 | 180 |
| GX 40H | 90 | 14 | 6 | 49 | 68 | 7 | 68 | 48 | 60 | 72 | 180 |

POSEBNE IZVEDBE *OPTIONAL EXTRAS*
KOD *CODE*
SKLOPKE SA ZAKLJUČAVANJEM
SWITCHES WITH LOCKING

56

Standardno zaključavanje u "0"
 - moguće i u drugim položajima (potrebno definirati)
 Moguća zaključavanja s 1-3 lokota.

*In standard manner locking is in "0"
 - possible in other positions, too (please define)
 It is possible to use 1-3 padlocks.*

| RUČICA HANDLE | PREDNJA PLOČA FRONT PLATE | PODLOGA ESCUTCH. PLATE | Y KOD / CODE |
|------------------|------------------------------|---------------------------|-----------------|
| crna / black | crna / black | bijela / white | 56 |
| siva / grey | siva / grey | bijela / white | 20 |

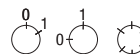
 GX16 U 56
 GX20 U 56

 GX16 O 56
 GX20 O 56

06

Standardno zaključavanje u "0"
 Koristi se kod sklopki 0-1 (60°, 90°). Moguća
 upotreba (60°) s većim brojem položaja
 (max. 6).

*In standard manner locking is in "0"
 Used at switches 0-1 (60°, 90°). Possible use
 (60°) with several positions (max. 6).*



| RUČICA HANDLE | ČEONA PLOČA COVER PLATE | PREDNJA PLOČA FRONT PLATE |
|------------------|----------------------------|------------------------------|
| siva / grey | siva / grey | siva / grey |

 GX16 U 06
 GX16H U 06
 GX20 U 06
 GX20H U 06
 GX32 U 06
 GX32H U 06
 GX40 U 06
 GX40H U 06

 GX16 O 06
 GX16H O 06
 GX20 O 06
 GX20H O 06
 GX32 O 06
 GX32H O 06
 GX40 O 06
 GX40H O 06

06D

Standardno zaključavanje u "0"
 - moguće i u drugim položajima (potrebno definirati)
 Moguća zaključavanja s 1-4 lokota.

*In standard manner locking is in "0"
 - possible in other positions, too (please define)
 It is possible to use 1-4 padlocks.*

| RUČICA HANDLE | PREDNJA PLOČA FRONT PLATE | PODLOGA ESCUTCH. PLATE | Y KOD / CODE |
|------------------|------------------------------|---------------------------|-----------------|
| crna / black | crna / black | bijela / white | 06D |
| siva / grey | siva / grey | bijela / white | 20 |
| crvena / red | žuta / yellow | žuta / yellow | 40 |
| crna / black | crna / black | crna / black | 50 |

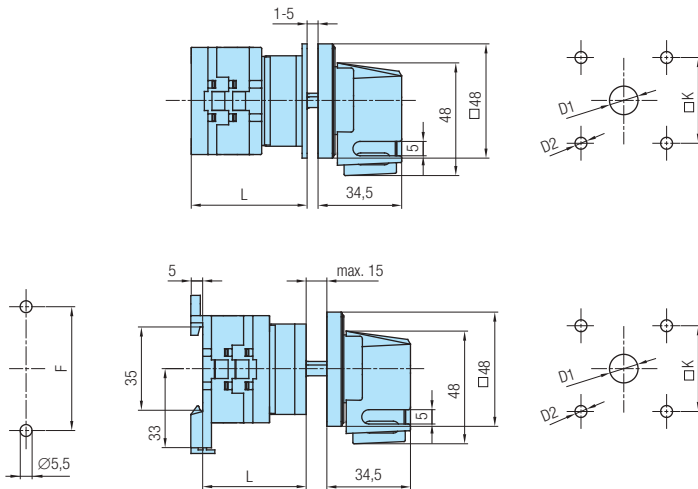
 GX32H U 06D
 GX40H U 06D

 GX32H O 06D
 GX40H O 06D

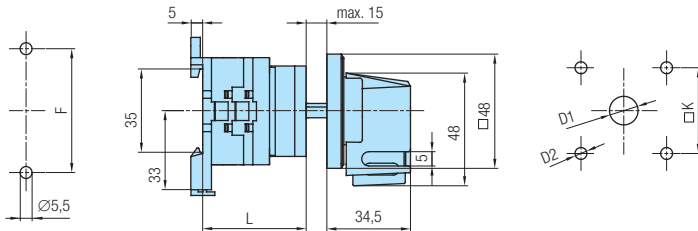
MJERNE SKICE *DIMENSIONAL DRAWINGS* (mm)

Plan bušenja / *Drilling plan*
Stražnji lim / *Rear panel*

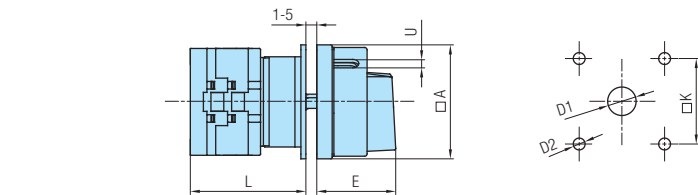
Plan bušenja / *Drilling plan*
Prednji lim / *Front panel*



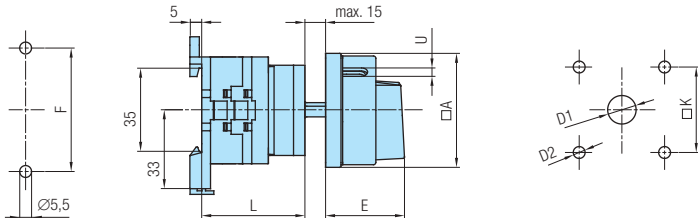
| Tip Type | Oznaka / Marking | | | | L | | | |
|----------|------------------|----|----|----|------|--------|-------|--|
| | D1 | D2 | □K | 1 | 2 | 3...12 | | |
| GX 16 | 12 | 5 | 36 | 40 | 48,5 | 57 | 133,5 | |
| GX 20 | 12 | 5 | 36 | 40 | 48,5 | 57 | 133,5 | |



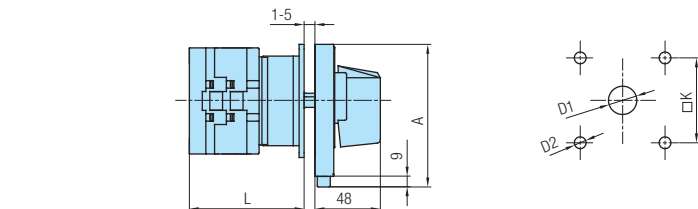
| Tip Type | Oznaka / Marking | | | | L | | | |
|----------|------------------|----|----|----|----|------|--------|--|
| | D1 | D2 | F | □K | 1 | 2 | 3...12 | |
| GX 16 | 12 | 5 | 52 | 36 | 37 | 45,5 | 54 | |
| GX 20 | 12 | 5 | 52 | 36 | 37 | 45,5 | 54 | |



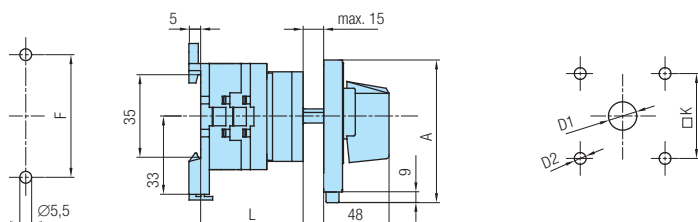
| Tip Type | Oznaka / Marking | | | | | | L | | | |
|----------|------------------|----|----|------|----|---|------|------|--------|-------|
| | □A | D1 | D2 | E | □K | U | 1 | 2 | 3...12 | |
| GX 16 | 48 | 12 | 5 | 34,2 | 36 | 5 | 40 | 48,5 | 57 | 133,5 |
| GX 16H | 65 | 12 | 5 | 38 | 48 | 6 | 40,5 | 49 | 57,5 | 134 |
| GX 20 | 48 | 12 | 5 | 34,2 | 36 | 5 | 40 | 48,5 | 57 | 133,5 |
| GX 20H | 65 | 12 | 5 | 38 | 48 | 6 | 40,5 | 49 | 57,5 | 134 |
| GX 32 | 65 | 14 | 5 | 38 | 48 | 6 | 48 | 60 | 72 | 180 |
| GX 32H | 90 | 14 | 6 | 49 | 68 | 7 | 50 | 62 | 74 | 182 |
| GX 40 | 65 | 14 | 5 | 38 | 48 | 6 | 48 | 60 | 72 | 180 |
| GX 40H | 90 | 14 | 6 | 49 | 68 | 7 | 50 | 62 | 74 | 182 |



| Tip Type | Oznaka / Marking | | | | | | | L | | | |
|----------|------------------|----|----|------|----|----|---|----|------|--------|-------|
| | □A | D1 | D2 | E | F | □K | U | 1 | 2 | 3...12 | |
| GX 16 | 48 | 12 | 5 | 34,2 | 52 | 36 | 5 | 37 | 45,5 | 54 | 130,5 |
| GX 16H | 65 | 12 | 5 | 38 | 52 | 48 | 6 | 37 | 45,5 | 54 | 130,5 |
| GX 20 | 48 | 12 | 5 | 34,2 | 52 | 36 | 5 | 37 | 45,5 | 54 | 130,5 |
| GX 20H | 65 | 12 | 5 | 38 | 52 | 48 | 6 | 37 | 45,5 | 54 | 130,5 |
| GX 32 | 65 | 14 | 5 | 38 | 68 | 48 | 6 | 48 | 60 | 72 | 180 |
| GX 32H | 90 | 14 | 6 | 49 | 68 | 68 | 7 | 48 | 60 | 72 | 180 |
| GX 40 | 65 | 14 | 5 | 38 | 68 | 48 | 6 | 48 | 60 | 72 | 180 |
| GX 40H | 90 | 14 | 6 | 49 | 68 | 68 | 7 | 48 | 60 | 72 | 180 |



| Tip Type | Oznaka / Marking | | | | L | | | |
|----------|------------------|----|----|----|----|----|--------|--|
| | A | D1 | D2 | □K | 1 | 2 | 3...12 | |
| GX 32H | 90x112 | 14 | 6 | 68 | 50 | 62 | 74 | |
| GX 40H | 90x112 | 14 | 6 | 68 | 50 | 62 | 74 | |



| Tip Type | Oznaka / Marking | | | | L | | | |
|----------|------------------|----|----|----|----|----|----|--------|
| | A | D1 | D2 | F | □K | 1 | 2 | 3...12 |
| GX 32H | 90x112 | 14 | 6 | 68 | 68 | 48 | 60 | 72 |
| GX 40H | 90x112 | 14 | 6 | 68 | 68 | 48 | 60 | 72 |

POSEBNE IZVEDBE *OPTIONAL EXTRAS*

KOD *CODE*

SKLOPKE SA ZAKLJUČAVANJEM
SWITCHES WITH LOCKING



05

Standardno zaključavanje u "0"
- moguće i u drugim položajima (potrebno definirati)
Ključ se vadi samo u zaključanom položaju.

*In standard manner locking is in "0"
- possible in other positions, too (please define)
The key can be pulled out only in locked position.*

| | | | |
|-------|-------|---|----|
| GX16H | | U | 05 |
| GX20H | | U | 05 |
| GX32 | | U | 05 |
| GX40 | | U | 05 |



13

Utični ključ. Standardno vađenje ključa u "0".
Na posebni zahtjev moguće i u drugim položajima pod 90°

*Socket key. In a standard manner pull-out of the key in "0".
Possible in other positions at the angle of 90° (please define).*



| | | | |
|-------|-------|---|----|
| GX16H | | U | 13 |
| GX20H | | U | 13 |
| GX32 | | U | 13 |
| GX40 | | U | 13 |

CENTRALNA UGRADNJA
CENTRAL MOUNTING



09

Ugradnja u Ø30 mm

Mounting into Ø30 mm

| | | | |
|------|-------|---|----|
| GX16 | | U | 09 |
| GX20 | | U | 09 |



11

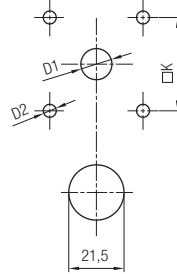
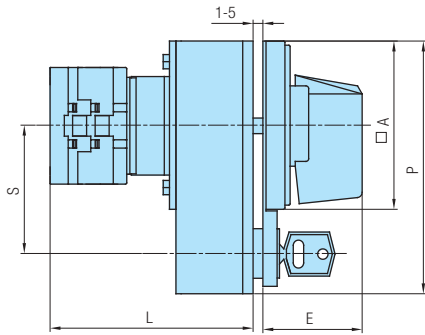
Ugradnja u Ø22 mm

Mounting into Ø22 mm

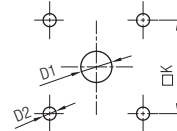
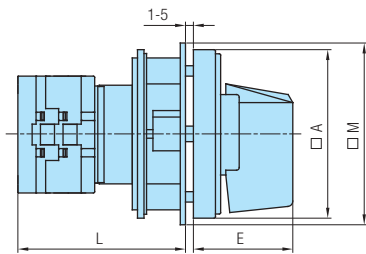
| | | | |
|------|-------|---|----|
| GX16 | | U | 11 |
| GX20 | | U | 11 |

MJERNE SKICE *DIMENSIONAL DRAWINGS* (mm)

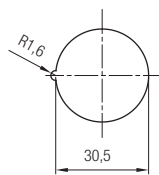
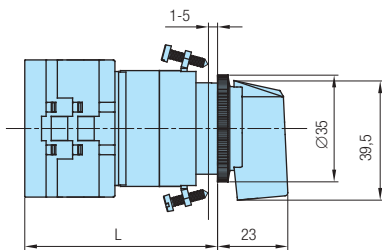
Plan bušenja / *Drilling plan*
Prednji lim / *Front panel*



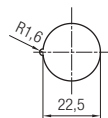
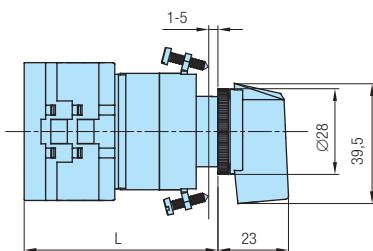
| Tip Type | Oznaka / Marking | | | | | | | L | | | |
|----------|------------------|----|----|----|----|-------|----|------|----|--------|-----|
| | A | D1 | D2 | E | K | P | S | 1 | 2 | 3...12 | |
| GX 16H | 65 | 12 | 5 | 36 | 48 | 65x98 | 48 | 70,5 | 79 | 87,5 | 164 |
| GX 20H | 65 | 12 | 5 | 36 | 48 | 65x98 | 48 | 70,5 | 79 | 87,5 | 164 |
| GX 32 | 65 | 14 | 5 | 36 | 48 | 65x98 | 48 | 78 | 90 | 102 | 210 |
| GX 40 | 65 | 14 | 5 | 36 | 48 | 65x98 | 48 | 78 | 90 | 102 | 210 |



| Tip Type | Oznaka / Marking | | | | | | | L | | | |
|----------|------------------|----|----|------|----|----|--|------|----|--------|-----|
| | A | D1 | D2 | E | M | K | | 1 | 2 | 3...12 | |
| GX 16H | 65 | 12 | 5 | 34,5 | 70 | 48 | | 55,5 | 64 | 72,5 | 149 |
| GX 20H | 65 | 12 | 5 | 34,5 | 70 | 48 | | 55,5 | 64 | 72,5 | 149 |
| GX 32 | 65 | 14 | 5 | 34,5 | 70 | 48 | | 63 | 75 | 87 | 195 |
| GX 40 | 65 | 14 | 5 | 34,5 | 70 | 48 | | 63 | 75 | 87 | 195 |



| Tip Type | L | | | |
|----------|----|------|--------|-------|
| | 1 | 2 | 3...12 | |
| GX 16 | 54 | 62,5 | 71 | 147,5 |
| GX 20 | 54 | 62,5 | 71 | 147,5 |



| Tip Type | L | | | |
|----------|----|------|--------|-------|
| | 1 | 2 | 3...12 | |
| GX 16 | 54 | 62,5 | 71 | 147,5 |
| GX 20 | 54 | 62,5 | 71 | 147,5 |

POSEBNE IZVEDBE *OPTIONAL EXTRAS*

KOD *CODE*

CENTRALNA UGRADNJA
CENTRAL MOUNTING



20

Ugradnja u $\varnothing 22$ mm odnosno $\varnothing 30$ mm.
Montaža s dva vijka.

Mounting into $\varnothing 22$ mm or $\varnothing 30$ mm with two screws.

| | | | |
|------|-------|---|----|
| GX16 | | U | 20 |
| GX20 | | U | 20 |



36
37

Brza ugradnja u $\varnothing 22$ mm (izvedba 36),
odnosno $\varnothing 30$ mm (izvedba 37).

Quick mounting into $\varnothing 22$ mm (optional extra 36) or into $\varnothing 30$ mm (optional extra 37).

| | | | | | |
|------|-------|---|----|----------|----|
| GX16 | | U | 36 | iii / or | 37 |
| GX20 | | U | 36 | | 37 |



47

Brza montaža u $\varnothing 22$ mm. Utična montaža kontaktnog bloka i prednjeg sklopa (odvajanje u položaju "0").

Quick mounting into $\varnothing 22$ mm. Snap-on mounting of contact block with front part (separation in position "0").

| | | | |
|------|-------|---|----|
| GX16 | | U | 47 |
| GX20 | | U | 47 |



67

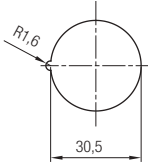
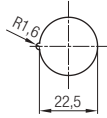
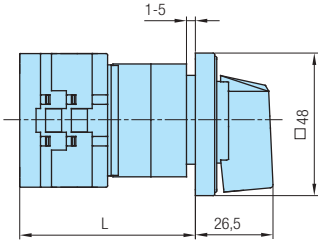
Brza montaža u $\varnothing 22$ mm. Utična montaža kontaktnog bloka i prednjeg sklopa (odvajanje u položaju "0").

Quick mounting into $\varnothing 22$ mm. Snap-on mounting of contact block with front part (separation in position "0").

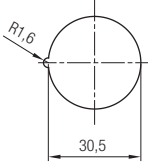
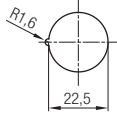
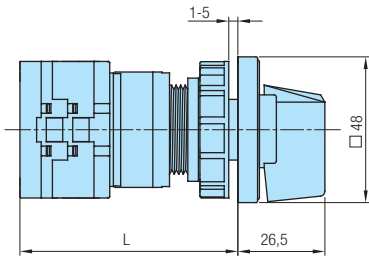
| | | | |
|------|-------|---|----|
| GX16 | | U | 67 |
| GX20 | | U | 67 |

MJERNE SKICE *DIMENSIONAL DRAWINGS* (mm)

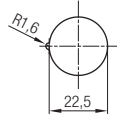
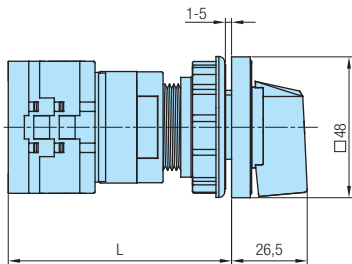
Plan bušenja / *Drilling plan*
Prednji lim / *Front panel*



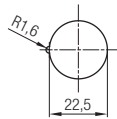
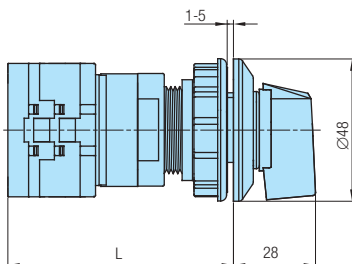
| Tip Type | L | | | |
|----------|------|------|--------|-------|
| | 1 | 2 | 3...12 | |
| GX 16 | 49,2 | 57,7 | 66,2 | 142,7 |
| GX 20 | 49,2 | 57,7 | 66,2 | 142,7 |



| Tip Type | L | | | |
|----------|------|------|--------|-------|
| | 1 | 2 | 3...12 | |
| GX 16 | 59,9 | 68,4 | 76,9 | 153,4 |
| GX 20 | 59,9 | 68,4 | 76,9 | 153,4 |



| Tip Type | L | | | |
|----------|------|------|--------|-------|
| | 1 | 2 | 3...12 | |
| GX 16 | 64,9 | 73,4 | 81,9 | 158,4 |
| GX 20 | 64,9 | 73,4 | 81,9 | 158,4 |



| Tip Type | L | | | |
|----------|------|------|--------|-------|
| | 1 | 2 | 3...12 | |
| GX 16 | 64,9 | 73,4 | 81,9 | 158,4 |
| GX 20 | 64,9 | 73,4 | 81,9 | 158,4 |

POSEBNE IZVEDBE *OPTIONAL EXTRAS*

KOD *CODE*

CENTRALNA UGRADNJA - SKLOPKE SA ZAKLJUČAVANJEM
CENTRAL MOUNTING - SWITCHES WITH LOCKING



10

Ugradnja u Ø30 mm.
Zaključavanje odnosno vadenje ključa pod 90°,
Moguća 1 - 4 zaključana položaja unutar 360°
(potrebno definirati).

*Mounting into Ø30 mm.
Locking and pull-out of the key at 90°
Possible 1 - 4 locked positions within 360°
(please define).*



GX16 U 10
GX20 U 10



12

Ugradnja u Ø22 mm.
Zaključavanje odnosno vadenje ključa pod 90°,
Moguća 1 - 4 zaključana položaja unutar 360°
(potrebno definirati).

*Mounting into Ø22 mm.
Locking and pull-out of the key at 90°
Possible 1 - 4 locked positions within 360°
(please define).*



GX16 U 12
GX20 U 12



29
30

Brza montaža u Ø22 mm (izvedba 29)
odnosno u Ø30 mm (izvedba 30).
Zaključavanje odnosno vadenje ključa pod 90°,
Moguća 1 - 4 zaključana položaja unutar 360°
(potrebno definirati).

*Quick mounting into Ø22 mm (optional extra 29)
or into Ø30 mm (optional extra 30).
Locking and pull-out of the key at 90°
Possible 1 - 4 locked positions within 360°
(please define).*



GX16 U 29 / or 30
GX20 U 29 / or 30



41
42

Brza montaža u Ø22 mm (izvedba 41)
odnosno u Ø30 mm (izvedba 42).
Zaključavanje (1 - 3 lokota) u "0",

*Quick mounting into Ø22 mm (optional extra 41)
or into Ø30 mm (optional extra 42).
Padlocking (1 - 3) in "0".*



GX16 U 41 / or 42
GX20 U 41 / or 42

| RUČICA HANDLE | PREDNJA PLOČA FRONT PLATE | PODLOGA ESCUTCH. PLATE | Y KOD / CODE |
|----------------------------|------------------------------|---------------------------|-----------------|
| crna/black | crna/black | bijela/white | |
| siva/grey | siva/grey | bijela/white | 20 |
| crvena-žuta/ red-yellow | žuta/yellow | žuta/yellow | 40 |



29D

Ugradnja u Ø22 mm.
Utična montaža kontaktnog bloka i prednjeg sklopa.

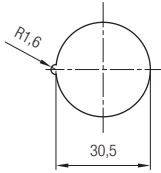
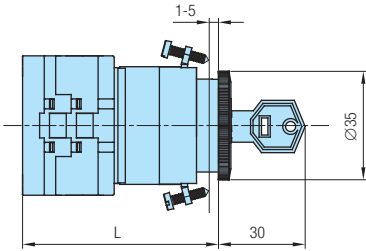
*Mounting into Ø22 mm.
Snap-on mounting of contact block with front part.*



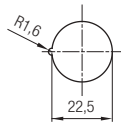
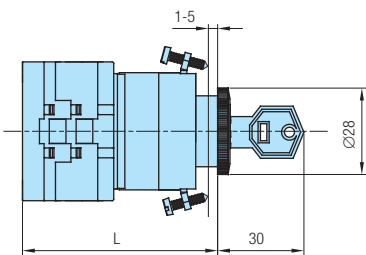
GX16 U 29D
GX20 U 29D

MJERNE SKICE *DIMENSIONAL DRAWINGS* (mm)

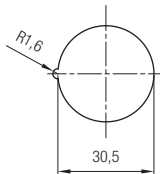
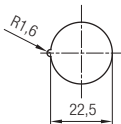
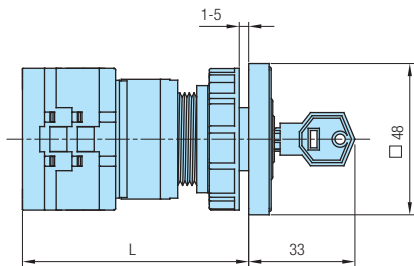
Plan bušenja / *Drilling plan*
Prednji lim / *Front panel*



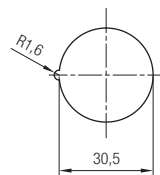
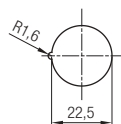
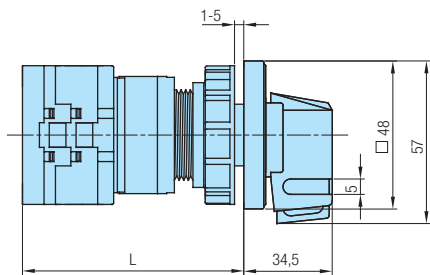
| Tip Type | L | | | |
|----------|------|------|-------|-------|
| | 1 | 2 | 3...8 | |
| GX 16 | 53,9 | 62,4 | 70,9 | 113,4 |
| GX 20 | 53,9 | 62,4 | 70,9 | 113,4 |



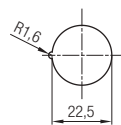
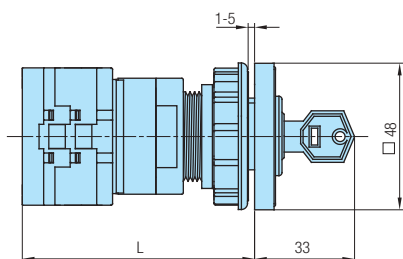
| Tip Type | L | | | |
|----------|------|------|-------|-------|
| | 1 | 2 | 3...8 | |
| GX 16 | 53,9 | 62,4 | 70,9 | 113,4 |
| GX 20 | 53,9 | 62,4 | 70,9 | 113,4 |



| Tip Type | L | | | |
|----------|------|------|-------|-------|
| | 1 | 2 | 3...8 | |
| GX 16 | 59,9 | 68,4 | 76,9 | 119,4 |
| GX 20 | 59,9 | 68,4 | 76,9 | 119,4 |



| Tip Type | L | | | |
|----------|------|------|--------|-------|
| | 1 | 2 | 3...12 | |
| GX 16 | 59,9 | 68,4 | 76,9 | 153,4 |
| GX 20 | 59,9 | 68,4 | 76,9 | 153,4 |



| Tip Type | L | | | |
|----------|------|------|-------|-------|
| | 1 | 2 | 3...8 | |
| GX 16 | 64,9 | 73,4 | 81,9 | 124,4 |
| GX 20 | 64,9 | 73,4 | 81,9 | 124,4 |

POSEBNE IZVEDBE *OPTIONAL EXTRAS*

KOD *CODE*

CENTRALNA UGRADNJA-SKLOPKE SA ZAKLJUČAVANJEM
CENTRAL MOUNTING-SWITCHES WITH LOCKING



29K

Ugradnja u Ø22 mm.
Utična montaža kontaktnog bloka i prednjeg sklopa.

*Mounting into Ø22 mm.
Snap-on mounting of contact block with front part.*



GX16 U 29K
GX20 U 29K



41D

Ugradnja u Ø22 mm.
Utična montaža kontaktnog bloka i prednjeg sklopa.

*Mounting into Ø22 mm.
Snap-on mounting of contact block with front part.*

| RUČICA HANDLE | PREDNJA PLOČA FRONT PLATE | PODLOGA ESCUATCH. PLATE | Y |
|----------------------------|------------------------------|----------------------------|------------|
| | | | KOD / CODE |
| crna/black | crna/black | bijela/white | |
| siva/grey | siva/grey | bijela/white | 20 |
| crvena-žuta/ red-yellow | žuta/yellow | žuta/yellow | 40 |

GX16 U 41D
GX20 U 41D



41K

Ugradnja u Ø22 mm.
Utična montaža kontaktnog bloka i prednjeg sklopa.

*Mounting into Ø22 mm.
Snap-on mounting of contact block with front part.*

GX16 U 41K
GX20 U 41K



**71
72**

Brza montaža u Ø22 mm (izvedba 71) odnosno u Ø30 mm (izvedba 72). Zaključavanje (1 - 3 lokota) u "0".

Quick mounting into Ø22 mm (optional extra 71) or into Ø30 mm (optional extra 72). Padlocking (1 - 3) in "0".



| RUČICA HANDLE | PREDNJA PLOČA FRONT PLATE | PODLOGA ESCUATCH. PLATE | Y |
|----------------------------|------------------------------|----------------------------|------------|
| | | | KOD / CODE |
| crna/black | crna/black | bijela/white | |
| siva/grey | siva/grey | bijela/white | 20 |
| crvena-žuta/ red-yellow | žuta/yellow | žuta/yellow | 40 |

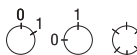
GX16 U 71 / or 72
GX20 U 71 / or 72



**76
77**

Brza montaža u Ø22 mm (izvedba 76) odnosno u Ø30 mm (izvedba 77). Zaključavanje (1 - 3 lokota) u "0".

Quick mounting into Ø22 mm (optional extra 76) or into Ø30 mm (optional extra 77). Padlocking (1 - 3) in "0".

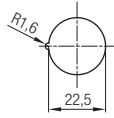
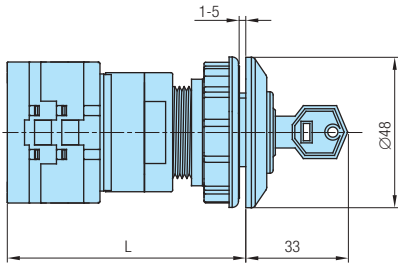


| RUČICA HANDLE | ČEONA PLOČA COVER PLATE | PREDNJA PLOČA FRONT PLATE | Y |
|------------------|----------------------------|------------------------------|------------|
| | | | KOD / CODE |
| crna / black | crna / black | crna / black | |
| siva / grey | siva / grey | siva / grey | 20 |
| crvena / red | žuta / yellow | žuta / yellow | 40 |

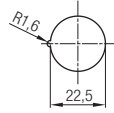
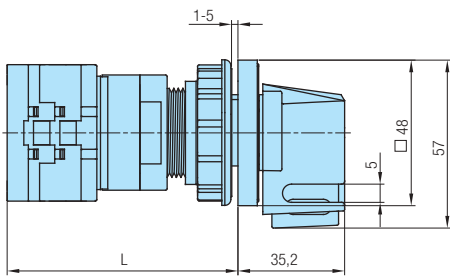
GX16 U 76 / or 77
GX20 U 76 / or 77

MJERNE SKICE *DIMENSIONAL DRAWINGS* (mm)

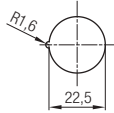
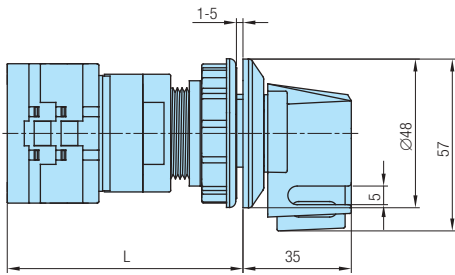
Plan bušenja / *Drilling plan*
Prednji lim / *Front panel*



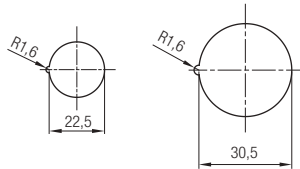
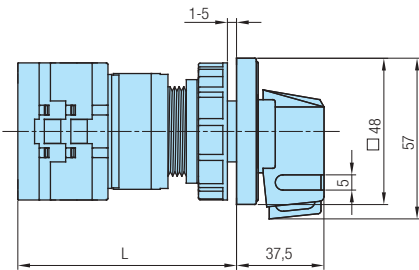
| Tip Type | L | | | |
|----------|------|------|-------|-------|
| | 1 | 2 | 3...8 | |
| GX 16 | 64,9 | 73,4 | 81,9 | 124,4 |
| GX 20 | 64,9 | 73,4 | 81,9 | 124,4 |



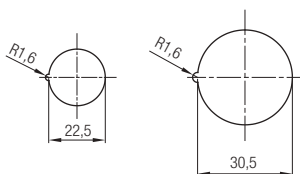
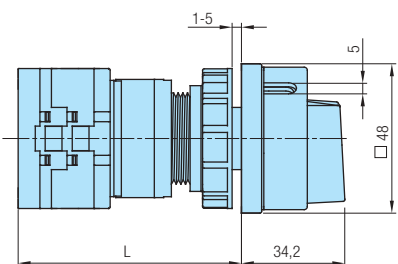
| Tip Type | L | | | |
|----------|------|------|--------|-------|
| | 1 | 2 | 3...12 | |
| GX 16 | 64,9 | 73,4 | 81,9 | 158,4 |
| GX 20 | 64,9 | 73,4 | 81,9 | 158,4 |



| Tip Type | L | | | |
|----------|------|------|--------|-------|
| | 1 | 2 | 3...12 | |
| GX 16 | 64,9 | 73,4 | 81,9 | 158,4 |
| GX 20 | 64,9 | 73,4 | 81,9 | 158,4 |



| Tip Type | L | | | |
|----------|------|------|--------|-------|
| | 1 | 2 | 3...12 | |
| GX 16 | 59,9 | 68,4 | 76,9 | 153,4 |
| GX 20 | 59,9 | 68,4 | 76,9 | 153,4 |



| Tip Type | L | | | |
|----------|------|------|--------|-------|
| | 1 | 2 | 3...12 | |
| GX 16 | 59,9 | 68,4 | 76,9 | 153,4 |
| GX 20 | 59,9 | 68,4 | 76,9 | 153,4 |

POSEBNE IZVEDBE *OPTIONAL EXTRAS*
KOD *CODE*
BLOKIRANJE POLOŽAJA-DVORUČNO UPRAVLJANJE
BLOCKADE OF POSITIONS-TWO HANDS OPERATING

16

Blokiranje položaja - dvoručno upravljanje, protiv nehotećnog uklapanja. Blokada moguća u svim položajima (potrebno definirati narudžbom).

Blockade of positions - two hands operating, against an accidental switching-on. Blockade is possible in any position (please define).

| | | | |
|-------|-------|---|----|
| GX16H | | U | 16 |
| GX20H | | U | 16 |
| GX32 | | U | 16 |
| GX40 | | U | 16 |


26

Blokiranje položaja - dvoručno upravljanje, protiv nehotećnog uklapanja, te zaključavanje jednim lokotom. Blokada i zaključavanje moguće u svim položajima (potrebno definirati narudžbom).

Blockade of positions - two hands operating, against an accidental switching-on, locking by one padlock. Blockade and locking is possible in any position (please define).

| | | | |
|-------|-------|---|----|
| GX16H | | U | 26 |
| GX20H | | U | 26 |
| GX32 | | U | 26 |
| GX40 | | U | 26 |


17

Blokiranje položaja + pomoćni kontakti (tipkalo). Moguća izvedba s jednim ili dva para uklopno-isklopnih kontakata. Upravljanje kontaktima ostvaruje se prije funkcije sklopke.

Standardno: blokada položaja u "0", pomoćni kontakti 1NO +1NC. Nestandardnu blokadu položaja i broj pomoćnih kontakata potrebno je definirati narudžbom.

Blockade of positions + auxiliary contacts (push button). Possible optional extra with one or two pairs of the open-close contacts. Operating of the contacts is being realized before switch function.

Standard: blockade in position "0", auxiliary contacts 1NO +1NC. It is necessary to define blockade of the positions and number of the auxiliary contacts.

| | | | |
|-------|-------|---|----|
| GX16H | | U | 17 |
| GX20H | | U | 17 |
| GX32 | | U | 17 |
| GX40 | | U | 17 |


27

Blokiranje položaja + pomoćni kontakti (tipkalo) + zaključavanje jednim lokotom. Moguća izvedba s jednim ili dva para uklopno-isklopnih kontakata. Upravljanje kontaktima ostvaruje se prije funkcije sklopke.

Standardno: blokada položaja u "0", pomoćni kontakti 1NO +1NC. Nestandardnu blokadu položaja i broj pomoćnih kontakata potrebno je definirati narudžbom.

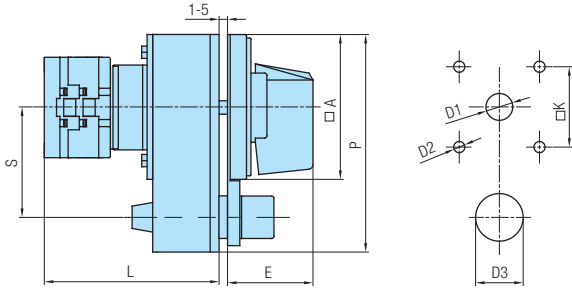
Blockade of positions + auxiliary contacts (push button) + locking by one padlock. Possible optional extra with one or two pairs of the open-close contacts. Operating of the contacts is being realized before switch function.

Standard: blockade in position "0", auxiliary contacts 1NO +1NC. It is necessary to define blockade of the positions and number of the auxiliary contacts.

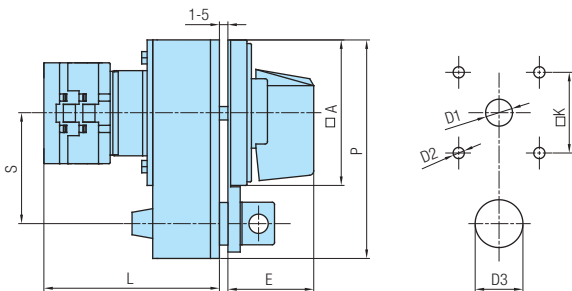
| | | | |
|-------|-------|---|----|
| GX16H | | U | 27 |
| GX20H | | U | 27 |
| GX32 | | U | 27 |
| GX40 | | U | 27 |

MJERNE SKICE *DIMENSIONAL DRAWINGS* (mm)

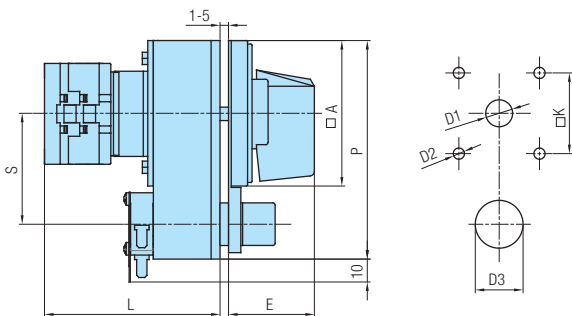
Plan bušenja / *Drilling plan*
Prednji lim / *Front panel*



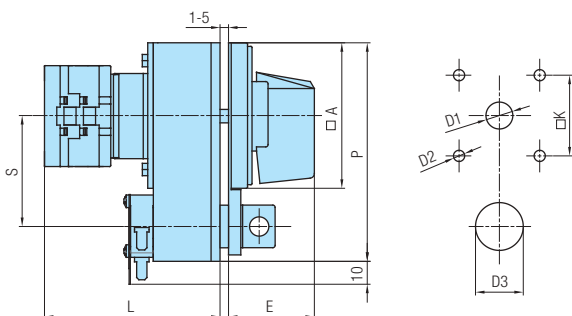
| Tip Type | Oznaka / Marking | | | | | | | | L | | | |
|----------|------------------|----|----|----|----|----|-------|----|------|----|--------|-----|
| | □A | D1 | D2 | D3 | E | □K | P | S | 1 | 2 | 3...12 | |
| GX 16H | 65 | 12 | 5 | 20 | 36 | 48 | 65x98 | 48 | 70,5 | 79 | 87,5 | 164 |
| GX 20H | 65 | 12 | 5 | 20 | 36 | 48 | 65x98 | 48 | 70,5 | 79 | 87,5 | 164 |
| GX 32 | 65 | 14 | 5 | 20 | 36 | 48 | 65x98 | 48 | 78 | 90 | 102 | 210 |
| GX 40 | 65 | 14 | 5 | 20 | 36 | 48 | 65x98 | 48 | 78 | 90 | 102 | 210 |



| Tip Type | Oznaka / Marking | | | | | | | | L | | | |
|----------|------------------|----|----|----|----|----|-------|----|------|----|--------|-----|
| | □A | D1 | D2 | D3 | E | □K | P | S | 1 | 2 | 3...12 | |
| GX 16H | 65 | 12 | 5 | 20 | 36 | 48 | 65x98 | 48 | 70,5 | 79 | 87,5 | 164 |
| GX 20H | 65 | 12 | 5 | 20 | 36 | 48 | 65x98 | 48 | 70,5 | 79 | 87,5 | 164 |
| GX 32 | 65 | 14 | 5 | 20 | 36 | 48 | 65x98 | 48 | 78 | 90 | 102 | 210 |
| GX 40 | 65 | 14 | 5 | 20 | 36 | 48 | 65x98 | 48 | 78 | 90 | 102 | 210 |



| Tip Type | Oznaka / Marking | | | | | | | | L | | | |
|----------|------------------|----|----|----|----|----|-------|----|------|----|--------|-----|
| | □A | D1 | D2 | D3 | E | □K | P | S | 1 | 2 | 3...12 | |
| GX 16H | 65 | 12 | 5 | 20 | 36 | 48 | 65x98 | 48 | 70,5 | 79 | 87,5 | 164 |
| GX 20H | 65 | 12 | 5 | 20 | 36 | 48 | 65x98 | 48 | 70,5 | 79 | 87,5 | 164 |
| GX 32 | 65 | 14 | 5 | 20 | 36 | 48 | 65x98 | 48 | 78 | 90 | 102 | 210 |
| GX 40 | 65 | 14 | 5 | 20 | 36 | 48 | 65x98 | 48 | 78 | 90 | 102 | 210 |



| Tip Type | Oznaka / Marking | | | | | | | | L | | | |
|----------|------------------|----|----|----|----|----|-------|----|------|----|--------|-----|
| | □A | D1 | D2 | D3 | E | □K | P | S | 1 | 2 | 3...12 | |
| GX 16H | 65 | 12 | 5 | 20 | 36 | 48 | 65x98 | 48 | 70,5 | 79 | 87,5 | 164 |
| GX 20H | 65 | 12 | 5 | 20 | 36 | 48 | 65x98 | 48 | 70,5 | 79 | 87,5 | 164 |
| GX 32 | 65 | 14 | 5 | 20 | 36 | 48 | 65x98 | 48 | 78 | 90 | 102 | 210 |
| GX 40 | 65 | 14 | 5 | 20 | 36 | 48 | 65x98 | 48 | 78 | 90 | 102 | 210 |

POSEBNE IZVEDBE *OPTIONAL EXTRAS*

KOD *CODE*

PRODUŽENJE OSOVINE
EXTENSION SHAFT



02

Standardna izvedba podrazumijeva da je P=100 mm. Specijalnom narudžbom potrebno je definirati dubinu ormara (L+P).

Standard version includes the P=100 mm. It is necessary to define board depth (L+P).

| | | | |
|-------|-------|---|----|
| GX16 | | O | 02 |
| GX16H | | O | 02 |
| GX20 | | O | 02 |
| GX20H | | O | 02 |
| GX32 | | O | 02 |
| GX32H | | O | 02 |
| GX40 | | O | 02 |
| GX40H | | O | 02 |

PRODUŽENJE OSOVINE I SPOJKA ZA VRATA
EXTENSION SHAFT AND DOOR COUPLING



258

Otvaranje vrata u položaju "0". Različita ugradbena dužina.

Door-opening in position "0". Different length for mounting.

| | | | |
|-------|-------|---|-----|
| GX16 | | O | 258 |
| GX16H | | O | 258 |
| GX20 | | O | 258 |
| GX20H | | O | 258 |
| GX32 | | O | 258 |
| GX40 | | O | 258 |



102

Otvaranje vrata u položaju "0". Standardno se isporučuje s osovinom dužine 100 mm.

Door-opening in position "0". Standard version with 100 mm shaft.

| KOD / CODE | IZVEDBA / VERSION |
|------------------|---|
| 102 | Standardna izvedba - osovina 100 mm <i>Standard version - shaft 100 mm</i> |
| 102 - 200 | Osovina 200 mm <i>Shaft 200 mm</i> |

| | | | |
|-------|-------|---|-----|
| GX16 | | O | 102 |
| GX16H | | O | 102 |
| GX20 | | O | 102 |
| GX20H | | O | 102 |
| GX32 | | O | 102 |
| GX40 | | O | 102 |



108D

Upotreba kod sklopki odvojene ugradnje, omogućava prilagodbu različitim dubinama ugradnje. Otvaranje vrata u položaju "0". Standardno se isporučuje s jednim modulom.

Used to adapt switches with base mounting to different mounting depths. Door opening in position "0". Standard version with one module.

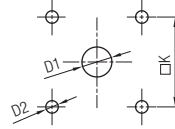
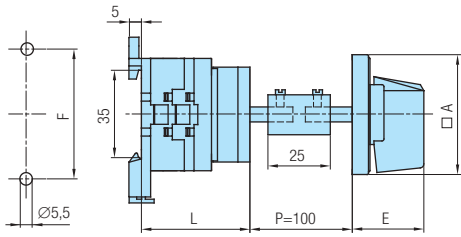
| KOD / CODE | IZVEDBA / VERSION |
|-----------------|--|
| 108D | Standardna izvedba s jednim modulom <i>Standard version with one module</i> |
| 108D - 2 | Izvedba s dva modula <i>Version with two modules</i> |
| 108D - 3 | Izvedba s tri modula <i>Version with three modules</i> |
| 108D - 4 | Izvedba s četiri modula <i>Version with four modules</i> |

| | | | |
|-------|-------|---|------|
| GX16 | | O | 108D |
| GX16H | | O | 108D |
| GX20 | | O | 108D |
| GX20H | | O | 108D |
| GX32 | | O | 108D |
| GX40 | | O | 108D |

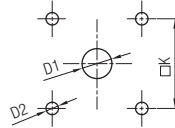
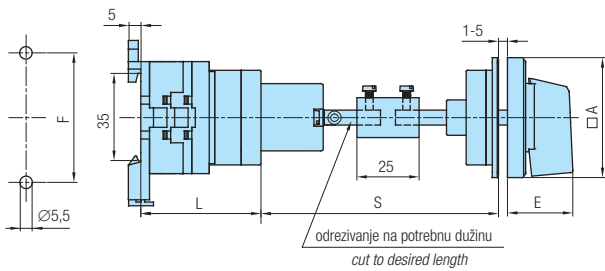
MJERNE SKICE *DIMENSIONAL DRAWINGS* (mm)

Plan bušenja / *Drilling plan*
Stražnji lim / *Rear panel*

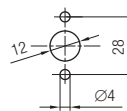
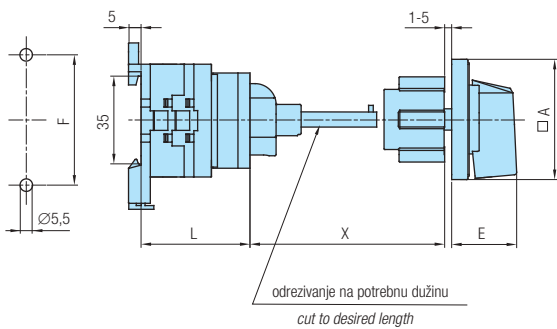
Plan bušenja / *Drilling plan*
Prednji lim / *Front panel*



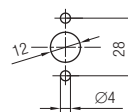
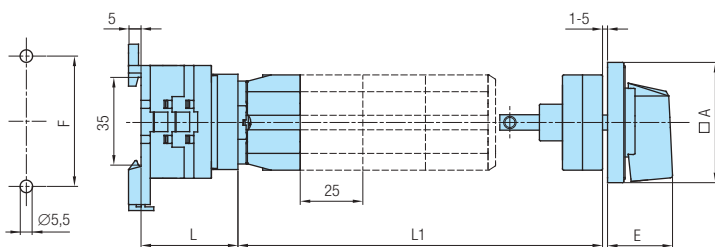
| Tip Type | Oznaka / Marking | | | | | | L | | | |
|----------|------------------|----|----|------|----|----|----|------|--------|-------|
| | A | D1 | D2 | E | F | K | 1 | 2 | 3...12 | |
| GX 16 | 48 | 12 | 5 | 26,5 | 52 | 36 | 37 | 45,5 | 54 | 130,5 |
| GX 16H | 65 | 12 | 5 | 34,5 | 52 | 48 | 37 | 45,5 | 54 | 130,5 |
| GX 20 | 48 | 12 | 5 | 26,5 | 52 | 36 | 37 | 45,5 | 54 | 130,5 |
| GX 20H | 65 | 12 | 5 | 34,5 | 52 | 48 | 37 | 45,5 | 54 | 130,5 |
| GX 32 | 65 | 14 | 5 | 34,5 | 68 | 48 | 48 | 60 | 72 | 180 |
| GX 32H | 90 | 14 | 6 | 41,5 | 68 | 68 | 48 | 60 | 72 | 180 |
| GX 40 | 65 | 14 | 5 | 34,5 | 68 | 48 | 48 | 60 | 72 | 180 |
| GX 40H | 90 | 14 | 6 | 41,5 | 68 | 68 | 48 | 60 | 72 | 180 |



| Tip Type | Oznaka / Marking | | | | | | L | | | | |
|----------|------------------|----|----|------|----|----|-------|----|------|--------|-------|
| | A | D1 | D2 | E | F | K | S | 1 | 2 | 3...12 | |
| GX 16 | 48 | 12 | 5 | 26,5 | 52 | 36 | 45-55 | 40 | 48,5 | 57 | 133,5 |
| GX 16H | 65 | 12 | 5 | 34,5 | 52 | 48 | 45-55 | 40 | 48,5 | 57 | 133,5 |
| GX 20 | 48 | 12 | 5 | 26,5 | 52 | 36 | 45-55 | 40 | 48,5 | 57 | 133,5 |
| GX 20H | 65 | 12 | 5 | 34,5 | 52 | 48 | 45-55 | 40 | 48,5 | 57 | 133,5 |
| GX 32 | 65 | 14 | 5 | 34,5 | 68 | 48 | 45-55 | 51 | 63 | 75 | 183 |
| GX 40 | 65 | 14 | 5 | 34,5 | 68 | 48 | 45-55 | 51 | 63 | 75 | 183 |



| Tip Type | Oznaka / Marking | | | | | L | | | |
|----------|------------------|------|----|---------|-----------|----|------|--------|-------|
| | A | E | F | X 102 | X 102-200 | 1 | 2 | 3...12 | |
| GX 16 | 48 | 26,5 | 52 | 113-122 | 213-222 | 37 | 45,5 | 54 | 130,5 |
| GX 16H | 65 | 34,5 | 52 | 113-122 | 213-222 | 37 | 45,5 | 54 | 130,5 |
| GX 20 | 48 | 26,5 | 52 | 113-122 | 213-222 | 37 | 45,5 | 54 | 130,5 |
| GX 20H | 65 | 34,5 | 52 | 113-122 | 213-222 | 37 | 45,5 | 54 | 130,5 |
| GX 32 | 65 | 34,5 | 68 | 113-122 | 213-222 | 48 | 60 | 72 | 180 |
| GX 32H | 90 | 41,5 | 68 | 133-139 | 233-239 | 48 | 60 | 72 | 180 |
| GX 40 | 65 | 34,5 | 68 | 113-122 | 213-222 | 48 | 60 | 72 | 180 |
| GX 40H | 90 | 41,5 | 68 | 133-139 | 233-239 | 48 | 60 | 72 | 180 |



| Tip Type | Oznaka / Marking | | | L | | | |
|----------|------------------|------|----|----|------|--------|-------|
| | A | E | F | 1 | 2 | 3...12 | |
| GX 16 | 48 | 26,5 | 52 | 32 | 40,5 | 49 | 125,5 |
| GX 16H | 65 | 34,5 | 52 | 32 | 40,5 | 49 | 125,5 |
| GX 20 | 48 | 26,5 | 52 | 32 | 40,5 | 49 | 125,5 |
| GX 20H | 65 | 34,5 | 52 | 32 | 40,5 | 49 | 125,5 |
| GX 32 | 65 | 34,5 | 68 | 43 | 55 | 67 | 175 |
| GX 40 | 65 | 34,5 | 68 | 43 | 55 | 67 | 175 |

| Broj modula / Number of modules | L1 | |
|------------------------------------|-----|-----|
| | min | max |
| 1 | 55 | 65 |
| 2 | 80 | 90 |
| 3 | 105 | 115 |
| 4 | 130 | 140 |

POSEBNE IZVEDBE *OPTIONAL EXTRAS*

KOD *CODE*

INSTALACIONA KAPA
SERVICE COVER



48
48D

Instalaciona kapa i ručica za standardnu ugradnju u 45 mm. Podešavanje dužine L (izvedba 48). Fiksna dužina L (izvedba 48D).

Both the service cover (45 mm) and handle are adjustable in height (optional extra 48). Fixed measure L (optional extra 48D).

| RUČICA HANDLE | Y KOD / CODE |
|------------------|-----------------|
| crna/black | |
| crvena/red | 40 |

49

Montaža na šinu 35 EN 50022 s instalacionom kapom i ključem za standardnu ugradnju u 45 mm.

Snap on base mounting for the rail 35 EN 50022. Both the service cover (45 mm) and key are adjustable in height.

| | | | |
|------|-------|---|-----|
| GX16 | | O | 48 |
| GX20 | | O | 48 |
| GX16 | | O | 48D |
| GX20 | | O | 48D |
| GX16 | | O | 49 |
| GX20 | | O | 49 |

NESTANDARDNA MONTAŽA
NON-STANDARD MOUNTING



38D
38T

Montaža sa dva vijka M4, na razmaku 28 mm (izvedba 38D) odnosno na razmaku 30 mm (izvedba 38T), bez prednje ploče.

Mounting by two screws M4, at a distance 28 mm (optional extra 38D) or at a distance 30 mm (optional extra 38T), without front plate.

39D
39T

Montaža sa dva vijka M4, na razmaku 28 mm (izvedba 39D) odnosno na razmaku 30 mm (izvedba 39T), s prednjom pločom.

Mounting by two screws M4, at a distance 28 mm (optional extra 39D) or at a distance 30 mm (optional extra 39T), with front plate.

31

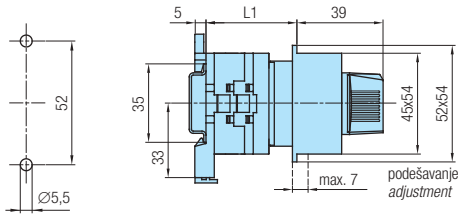
Montaža s četiri umetnute matice M4.

Mounting by four inserted nuts M4.

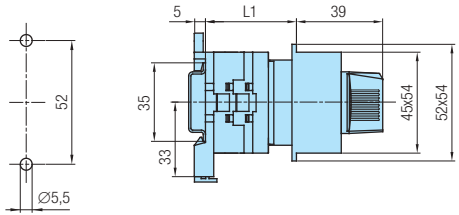
| | | | | |
|-----------------|-------|---|-----|-----|
| GX16 | | U | 38D | 38T |
| GX20 | | U | 38D | 38T |
| GX32 | | U | 38D | - |
| GX40 | | U | 38D | - |
| <i>iii / or</i> | | | | |
| GX16 | | U | 39D | 39T |
| GX16H | | U | 39D | - |
| GX20 | | U | 39D | 39T |
| GX20H | | U | 39D | - |
| GX32 | | U | 39D | - |
| GX32H | | U | 39D | - |
| GX40 | | U | 39D | - |
| GX40H | | U | 39D | - |
| <i>iii / or</i> | | | | |
| GX16 | | U | 31 | |
| GX16H | | U | 31 | |
| GX20 | | U | 31 | |
| GX20H | | U | 31 | |
| GX32 | | U | 31 | |
| GX32H | | U | 31 | |
| GX40 | | U | 31 | |
| GX40H | | U | 31 | |

MJERNE SKICE *DIMENSIONAL DRAWINGS* (mm)

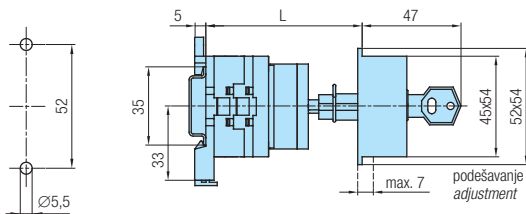
Plan bušenja / *Drilling plan*
Prednji lim / *Front panel*



| Tip Type | L | | |
|----------|-----------|-------|-----------|
| | 1 | 2 | 3 |
| GX 16 | 39,5-46,5 | 48-55 | 56,5-63,5 |
| GX 20 | 39,5-46,5 | 48-55 | 56,5-63,5 |

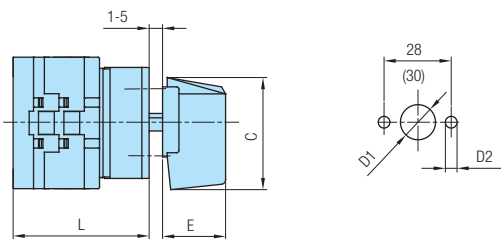


| Tip Type | L | | |
|----------|----|------|----|
| | 1 | 2 | 3 |
| GX 16 | 33 | 41,5 | 50 |
| GX 20 | 33 | 41,5 | 50 |

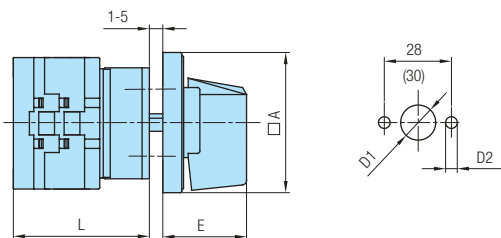


| Tip Type | L | | |
|----------|-----------|-------|-----------|
| | 1 | 2 | 3 |
| GX 16 | 57,5-64,5 | 66-73 | 74,5-81,5 |
| GX 20 | 57,5-64,5 | 66-73 | 74,5-81,5 |

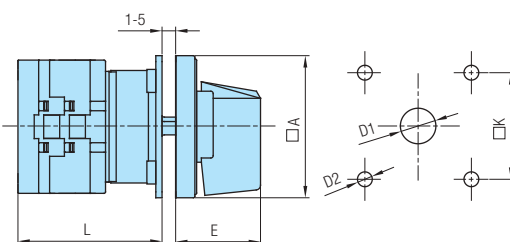
Plan bušenja / *Drilling plan*
Prednji lim / *Front panel*



| Tip Type | L | | | | | | | | | | | |
|----------|------|----|----|----|------|------|------|------|------|-------|----|-------|
| | C | D1 | D2 | E | 1 | 2 | 3 | 4 | 5 | 6 | 7 | 8 |
| GX 16 | 39,5 | 12 | 5 | 19 | 43 | 51,5 | 60 | 68,5 | 77 | 85,5 | 94 | 102,5 |
| GX 20 | 39,5 | 14 | 5 | 19 | 43 | 51,5 | 60 | 68,5 | 77 | 85,5 | 94 | 102,5 |
| GX 32 | 53 | 14 | 5 | 25 | 50,5 | 62,5 | 74,5 | 86,5 | 98,5 | 110,5 | - | - |
| GX 40 | 53 | 14 | 5 | 25 | 50,5 | 62,5 | 74,5 | 86,5 | 98,5 | 110,5 | - | - |



| Tip Type | Oznaka / Marking | | | | L | | | | | | | |
|----------|------------------|----|----|------|------|------|------|------|------|-------|------|-------|
| | □A | D1 | D2 | E | 1 | 2 | 3 | 4 | 5 | 6 | 7 | 8 |
| GX 16 | 48 | 12 | 5 | 26,5 | 43 | 51,5 | 60 | 68,5 | 77 | 85,5 | 94 | 102,5 |
| GX 16H | 65 | 12 | 5 | 34,5 | 43,5 | 52 | 60,5 | 69 | 77,5 | 86 | 94,5 | 103 |
| GX 20 | 48 | 12 | 5 | 26,5 | 43 | 51,5 | 60 | 68,5 | 77 | 85,5 | 94 | 102,5 |
| GX 20H | 65 | 12 | 5 | 34,5 | 43,5 | 52 | 60,5 | 69 | 77,5 | 86 | 94,5 | 103 |
| GX 32 | 65 | 14 | 5 | 34,5 | 50,5 | 62,5 | 74,5 | 86,5 | 98,5 | 110,5 | - | - |
| GX 40 | 65 | 14 | 5 | 34,5 | 50,5 | 62,5 | 74,5 | 86,5 | 98,5 | 110,5 | - | - |



| Tip Type | Oznaka / Marking | | | | L | | |
|----------|------------------|----|----|------|----|------|------|
| | □A | D1 | D2 | E | □K | 1 | 2 |
| GX 16 | 48 | 12 | 5 | 26,5 | 36 | 40 | 48,5 |
| GX 16H | 65 | 12 | 5 | 34,5 | 48 | 40,5 | 49 |
| GX 20 | 48 | 12 | 5 | 26,5 | 36 | 40 | 48,5 |
| GX 20H | 65 | 12 | 5 | 34,5 | 48 | 40,5 | 49 |
| GX 32 | 65 | 14 | 5 | 34,5 | 48 | 48 | 60 |
| GX 32H | 90 | 14 | 6 | 41,5 | 68 | 50 | 62 |
| GX 40 | 65 | 14 | 5 | 34,5 | 48 | 48 | 60 |
| GX 40H | 90 | 14 | 6 | 41,5 | 68 | 50 | 62 |

POSEBNE IZVEDBE *OPTIONAL EXTRAS*
KOD *CODE*
SIGNALNE SVJETILJKE
SIGNAL LAMPS

15

Standardno se ugrađuje crvena svjetiljka (230V), desno dolje. Mogući naponi 110; 400 V kao i zelena boja svjetiljke (potrebno definirati). Na poseban zahtjev ugrađujemo i drugu svjetiljku lijevo dolje.

In a standard manner, the red lamp (230 V) is built in the right bottom corner. Possible voltages are 110; 400 V and green lamp, too (please define). On special request second lamp can be built in the left bottom corner.

| | | | |
|-------|-------|---|----|
| GX16 | | U | 15 |
| GX16H | | U | 15 |
| GX20 | | U | 15 |
| GX20H | | U | 15 |
| GX32 | | U | 15 |
| GX40 | | U | 15 |

| | | | |
|-------|-------|---|----|
| GX16 | | O | 15 |
| GX16H | | O | 15 |
| GX20 | | O | 15 |
| GX20H | | O | 15 |
| GX32 | | O | 15 |
| GX40 | | O | 15 |

BLOKIRANJE SMJERA OKRETANJA
BLOCKADE OF THE ROTATION DIRECTION

28

Blokiranje lijevog smjera okretanja.

The left direction is blocked.

| | | | |
|-------|-------|---|----|
| GX16 | | U | 28 |
| GX16H | | U | 28 |
| GX20 | | U | 28 |
| GX20H | | U | 28 |
| GX32 | | U | 28 |
| GX32H | | U | 28 |
| GX40 | | U | 28 |
| GX40H | | U | 28 |

| | | | |
|-------|-------|---|----|
| GX16 | | O | 28 |
| GX16H | | O | 28 |
| GX20 | | O | 28 |
| GX20H | | O | 28 |
| GX32 | | O | 28 |
| GX32H | | O | 28 |
| GX40 | | O | 28 |
| GX40H | | O | 28 |

GLAVNA SKLOPKA
MAIN SWITCH
GLAVNA SKLOPKA UJEDNO I SKLOPKA ZA NUŽNO ISKLAPANJE
MAIN SWITCH WITH EMERGENCY

21
22

Zaključavanje kličem samo u "0".
 Zaštita od slučajnog dodira dovodnih priključnih stezaljki pod naponom.
 Kut zakreta 60° i 90°.

*Locking by means of the key only in "0".
 Protection against an accidental contact with the supplying terminals under voltage.
 Switching angle 60° and 90°.*



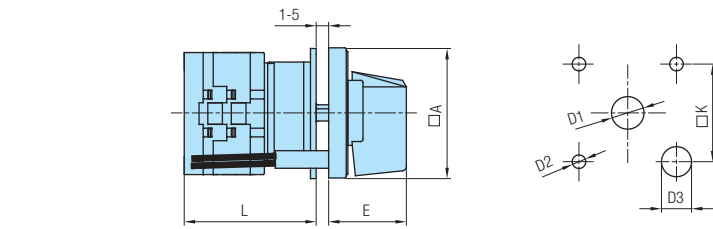
| | | | | |
|-------|-------|---|----|----|
| GX16H | | U | 21 | 22 |
| GX20H | | U | 21 | 22 |
| GX32 | | U | 21 | 22 |
| GX40 | | U | 21 | 22 |

ili /or

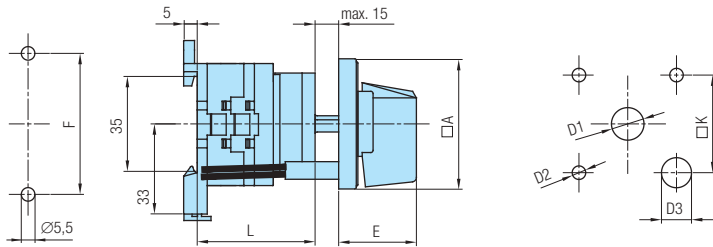
MJERNE SKICE *DIMENSIONAL DRAWINGS* (mm)

Plan bušenja / *Drilling plan*
Stražnji lim / *Rear panel*

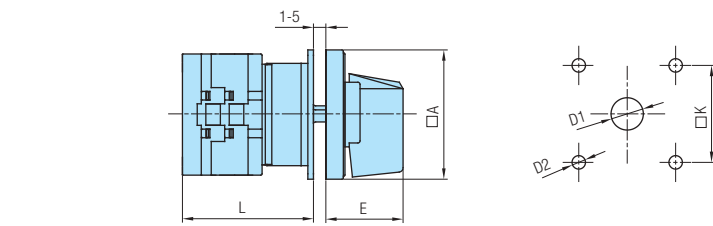
Plan bušenja / *Drilling plan*
Prednji lim / *Front panel*



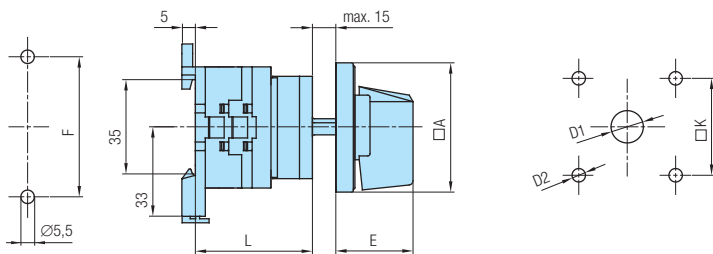
| Tip Type | Oznaka / Marking | | | | | | L | | | |
|----------|------------------|----|----|-----|------|----|------|------|--------|-------|
| | A | D1 | D2 | D3 | E | K | 1 | 2 | 3...12 | |
| GX 16 | 48 | 12 | 5 | 6,5 | 26,5 | 36 | 40 | 48,5 | 57 | 133,5 |
| GX 16H | 65 | 12 | 5 | 6,5 | 34,5 | 48 | 40,5 | 49 | 57,5 | 134 |
| GX 20 | 48 | 12 | 5 | 6,5 | 26,5 | 36 | 40 | 48,5 | 57 | 133,5 |
| GX 20H | 65 | 12 | 5 | 6,5 | 34,5 | 48 | 40,5 | 49 | 57,5 | 134 |
| GX 32 | 65 | 14 | 5 | 6,5 | 34,5 | 48 | 48 | 60 | 72 | 180 |
| GX 40 | 65 | 14 | 5 | 6,5 | 34,5 | 48 | 48 | 60 | 72 | 180 |



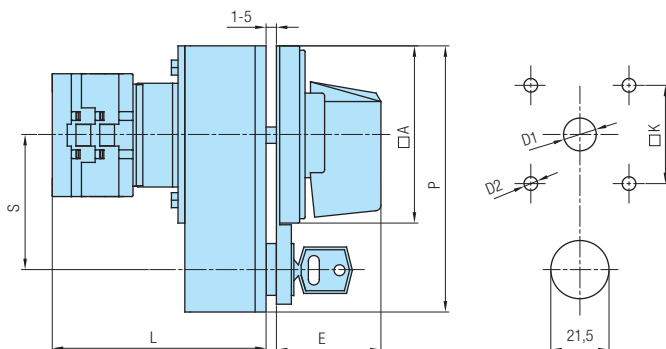
| Tip Type | Oznaka / Marking | | | | | | | L | | | |
|----------|------------------|----|----|-----|------|----|----|----|------|--------|-------|
| | A | D1 | D2 | D3 | E | F | K | 1 | 2 | 3...12 | |
| GX 16 | 48 | 12 | 5 | 6,5 | 26,5 | 52 | 36 | 37 | 45,5 | 54 | 130,5 |
| GX 16H | 65 | 12 | 5 | 6,5 | 34,5 | 52 | 48 | 37 | 45,5 | 54 | 130,5 |
| GX 20 | 48 | 12 | 5 | 6,5 | 26,5 | 52 | 36 | 37 | 45,5 | 54 | 130,5 |
| GX 20H | 65 | 12 | 5 | 6,5 | 34,5 | 52 | 48 | 37 | 45,5 | 54 | 130,5 |
| GX 32 | 65 | 14 | 5 | 6,5 | 34,5 | 68 | 48 | 48 | 60 | 72 | 180 |
| GX 40 | 65 | 14 | 5 | 6,5 | 34,5 | 68 | 48 | 48 | 60 | 72 | 180 |



| Tip Type | Oznaka / Marking | | | | | L | | | |
|----------|------------------|----|----|------|----|------|------|--------|-------|
| | A | D1 | D2 | E | K | 1 | 2 | 3...12 | |
| GX 16 | 48 | 12 | 5 | 26,5 | 36 | 40 | 48,5 | 57 | 133,5 |
| GX 16H | 65 | 12 | 5 | 34,5 | 48 | 40,5 | 49 | 57,5 | 134 |
| GX 20 | 48 | 12 | 5 | 26,5 | 36 | 40 | 48,5 | 57 | 133,5 |
| GX 20H | 65 | 12 | 5 | 34,5 | 48 | 40,5 | 49 | 57,5 | 134 |
| GX 32 | 65 | 14 | 5 | 34,5 | 48 | 48 | 60 | 72 | 180 |
| GX 32H | 90 | 14 | 6 | 41,5 | 68 | 50 | 62 | 74 | 182 |
| GX 40 | 65 | 14 | 5 | 34,5 | 48 | 48 | 60 | 72 | 180 |
| GX 40H | 90 | 14 | 6 | 41,5 | 68 | 50 | 62 | 74 | 182 |



| Tip Type | Oznaka / Marking | | | | | | L | | | |
|----------|------------------|----|----|------|----|----|----|------|--------|-------|
| | A | D1 | D2 | E | F | K | 1 | 2 | 3...12 | |
| GX 16 | 48 | 12 | 5 | 26,5 | 52 | 36 | 37 | 45,5 | 54 | 130,5 |
| GX 16H | 65 | 12 | 5 | 34,5 | 52 | 48 | 37 | 45,5 | 54 | 130,5 |
| GX 20 | 48 | 12 | 5 | 26,5 | 52 | 36 | 37 | 45,5 | 54 | 130,5 |
| GX 20H | 65 | 12 | 5 | 34,5 | 52 | 48 | 37 | 45,5 | 54 | 130,5 |
| GX 32 | 65 | 14 | 5 | 34,5 | 68 | 48 | 48 | 60 | 72 | 180 |
| GX 32H | 90 | 14 | 6 | 41,5 | 68 | 68 | 48 | 60 | 72 | 180 |
| GX 40 | 65 | 14 | 5 | 34,5 | 68 | 48 | 48 | 60 | 72 | 180 |
| GX 40H | 90 | 14 | 6 | 41,5 | 68 | 68 | 48 | 60 | 72 | 180 |



| Tip Type | Oznaka / Marking | | | | | | | |
|----------|------------------|----|----|----|----|-------|----|------|
| | A | D1 | D2 | E | K | P | S | L |
| GX 16H | 65 | 12 | 5 | 36 | 48 | 65x98 | 48 | 70,5 |
| GX 20H | 65 | 12 | 5 | 36 | 48 | 65x98 | 48 | 70,5 |
| GX 32 | 65 | 14 | 5 | 36 | 48 | 65x98 | 48 | 90 |
| GX 40 | 65 | 14 | 5 | 36 | 48 | 65x98 | 48 | 90 |

POSEBNE IZVEDBE *OPTIONAL EXTRAS*

KOD *CODE*

GLAVNA SKLOPKA

MAIN SWITCH

GLAVNA SKLOPKA UJEDNO I SKLOPKA ZA NUŽNO ISKLAPANJE

MAIN SWITCH WITH EMERGENCY



73
75

Zaključavanje (1-3 lokota) samo u "0".
Zaštita od slučajnog dodira dovodnih priključnih stezaljki pod naponom.
Kut zakreta 60° i 90°.

Locking (1-3) only in "0".
Protection against an accidental contact with the supplying terminals under voltage.
Switching angle 60° and 90°.



| | | | | |
|------|-------|---|----|----|
| GX16 | | U | 73 | 75 |
| GX20 | | U | 73 | 75 |

| | | | | |
|------|-------|---|----|----|
| GX16 | | O | 73 | 75 |
| GX20 | | O | 73 | 75 |

SPOJKA ZA VRATA

DOOR COUPLING

GLAVNA SKLOPKA UJEDNO I SKLOPKA ZA NUŽNO ISKLAPANJE

MAIN SWITCH WITH EMERGENCY



86

Zaključavanje (1-3 lokota) samo u "0".
Otvaranje vrata samo u "0" položaju.
Zaštita od slučajnog dodira dovodnih priključnih stezaljki pod naponom samo u "0" položaju. Kut zakreta 60° i 90°.
Ukoliko je traženi "S" veći od ponuđenog potrebno je definirati "S" ili dubinu ormara (L+S). Minimalna udaljenost od šarke 150 mm.

Padlocking (1-3) only in "0".
Door-opening only in "0" position.
Protection against an accidental contact with the supplying terminals under voltage only in "0" position. Switching angle 60° and 90°. When required "S" is bigger then offered, it is necessary to define "S" or depth of the board (L+S). Minimal distance to the door-hinge 150 mm.

| | | | | |
|------|-------|---|----|--|
| GX16 | | O | 86 | |
| GX20 | | O | 86 | |

SPOJKA ZA VRATA

DOOR COUPLING



07
08

Otvaranje vrata u bilo kojem položaju (izvedba 07) ili samo u "0" (izvedba 08).
Ukoliko je traženi "S" veći od ponuđenog potrebno je definirati "S" ili dubinu ormara (L+S). Minimalna udaljenost od šarke 150 mm.

Door-opening in any position (07) or only in "0" (08).
When required "S" is bigger then offered, it is necessary to define "S" or depth of the board (L+S).
Minimal distance to the door-hinge 150 mm.

| | | | | |
|-------|-------|---|----|----|
| GX16H | | O | 07 | 08 |
| GX16H | | O | 07 | 08 |
| GX32 | | O | 07 | 08 |
| GX32H | | O | 07 | 08 |
| GX40 | | O | 07 | 08 |
| GX40H | | O | 07 | 08 |



57/58
58D

Otvaranje vrata u bilo kojem položaju (izvedba 57) ili samo u "0" (izvedba 58).
Montaža s 4 vijka (izvedbe 57, 58).
Montaža s 2 vijka (izvedba 58D).
Minimalna udaljenost od šarke 150 mm.

Door-opening in any position (57) or only in "0" (58).
Mounting with 4 screws (optional extra 57, 58).
Mounting with 2 screws (optional extra 58D).
Minimal distance to the door-hinge 150 mm.

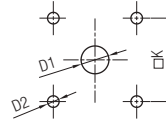
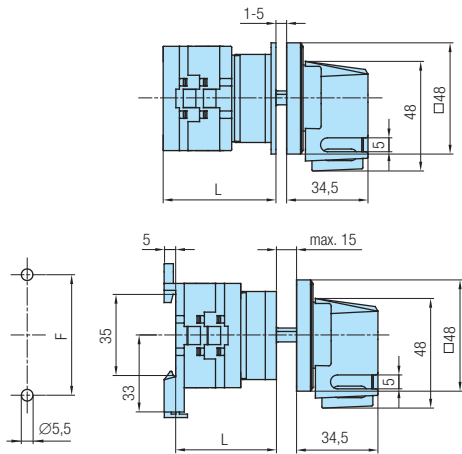
| | | | | |
|-------|-------|---|----|----|
| GX16 | | O | 57 | 58 |
| GX16H | | O | 57 | 58 |
| GX20 | | O | 57 | 58 |
| GX20H | | O | 57 | 58 |
| GX32 | | O | 57 | 58 |
| GX40 | | O | 57 | 58 |

| | | | | |
|-------|-------|---|-----|--|
| GX16 | | O | 58D | |
| GX16H | | O | 58D | |
| GX20 | | O | 58D | |
| GX20H | | O | 58D | |
| GX32 | | O | 58D | |
| GX40 | | O | 58D | |

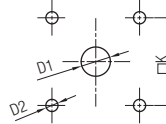
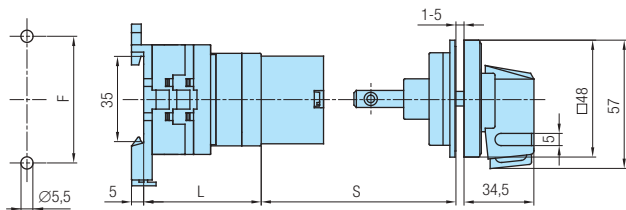
MJERNE SKICE *DIMENSIONAL DRAWINGS* (mm)

Plan bušenja / *Drilling plan*
Stražnji lim / *Rear panel*

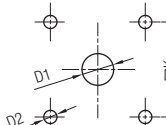
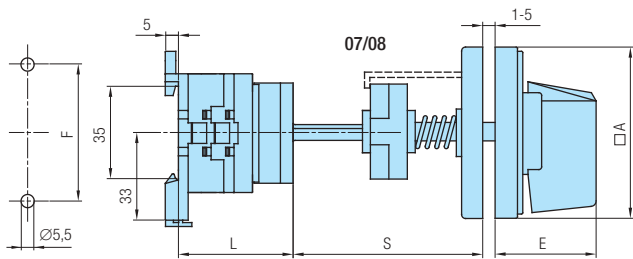
Plan bušenja / *Drilling plan*
Prednji lim / *Front panel*



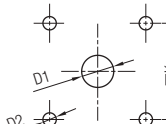
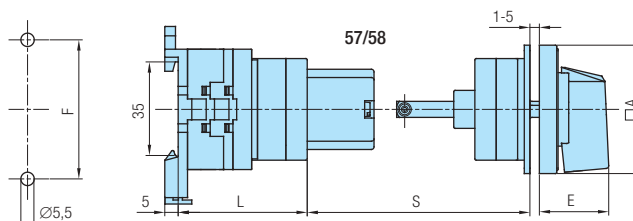
| Tip Type | Oznaka / Marking | | | L | | | |
|----------|------------------|----|----|----|------|--------|-------|
| | D1 | D2 | □K | 1 | 2 | 3...12 | |
| GX 16 | 12 | 5 | 36 | 40 | 48,5 | 57 | 133,5 |
| GX 20 | 12 | 5 | 36 | 40 | 48,5 | 57 | 133,5 |



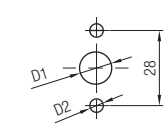
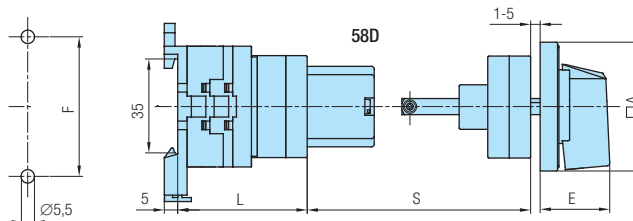
| Tip Type | Oznaka / Marking | | | | | L | | | |
|----------|------------------|----|----|----|-------|----|------|--------|-------|
| | D1 | D2 | F | □K | S | 1 | 2 | 3...12 | |
| GX 16 | 12 | 5 | 52 | 36 | 45-55 | 40 | 48,5 | 57 | 133,5 |
| GX 20 | 12 | 5 | 52 | 36 | 45-55 | 40 | 48,5 | 57 | 133,5 |



| Tip Type | Oznaka / Marking | | | | | | | | L | | | |
|----------|------------------|----|----|------|----|----|----|----|------|--------|-------|--|
| | □A | D1 | D2 | E | F | □K | S | 1 | 2 | 3...12 | | |
| GX 16H | 65 | 12 | 5 | 34,5 | 52 | 48 | 60 | 40 | 48,5 | 57 | 133,5 | |
| GX 20H | 65 | 12 | 5 | 34,5 | 52 | 48 | 60 | 40 | 48,5 | 57 | 133,5 | |
| GX 32 | 65 | 14 | 5 | 34,5 | 68 | 48 | 64 | 51 | 63 | 75 | 183 | |
| GX 32H | 90 | 14 | 6 | 41,5 | 68 | 68 | 64 | 51 | 63 | 75 | 183 | |
| GX 40 | 65 | 14 | 5 | 34,5 | 68 | 48 | 64 | 51 | 63 | 75 | 183 | |
| GX 40H | 90 | 14 | 6 | 41,5 | 68 | 68 | 64 | 51 | 63 | 75 | 183 | |



| Tip Type | Oznaka / Marking | | | | | | | | L | | | |
|----------|------------------|----|----|------|----|----|-------|----|------|--------|-------|--|
| | □A | D1 | D2 | E | F | □K | S | 1 | 2 | 3...12 | | |
| GX 16 | 48 | 12 | 5 | 26,5 | 52 | 36 | 45-55 | 40 | 48,5 | 57 | 133,5 | |
| GX 16H | 65 | 12 | 5 | 34,5 | 52 | 48 | 45-55 | 40 | 48,5 | 57 | 133,5 | |
| GX 20 | 48 | 12 | 5 | 26,5 | 52 | 36 | 45-55 | 40 | 48,5 | 57 | 133,5 | |
| GX 20H | 65 | 12 | 5 | 34,5 | 52 | 48 | 45-55 | 40 | 48,5 | 57 | 133,5 | |
| GX 32 | 65 | 14 | 5 | 34,5 | 68 | 48 | 45-55 | 51 | 63 | 75 | 183 | |
| GX 40 | 65 | 14 | 5 | 34,5 | 68 | 48 | 45-55 | 51 | 63 | 75 | 183 | |



POSEBNE IZVEDBE *OPTIONAL EXTRAS*

KOD *CODE*

SPOJKA ZA VRATA
DOOR COUPLING



85

Zaključavanje (1-3 lokota) samo u "0".
Otvaranje vrata samo u "0" položaju.
Ukoliko je traženi "S" veći od ponuđenog potrebno je definirati "S" ili dubinu ormara (L+S).
Minimalna udaljenost od šarke 150 mm.

*Padlocking (1-3) only in "0".
Door-opening only in "0" position.
When required "S" is bigger then offered, it is necessary to define "S" or depth of the board (L+S). Minimal distance to the door-hinge 150 mm.*

| RUČICA HANDLE | PODLOGA ESCUTCH. PLATE | PREDNJA PLOČA FRONT PLATE | Y KOD / CODE |
|------------------|---------------------------|------------------------------|-----------------|
| crna/black | bijela/white | crna/black | |
| siva/grey | bijela/white | siva/grey | 20 |

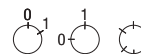
GX16 O 85
GX20 O 85

87
88



Zaključavanje samo u "0".
Otvaranje vrata samo u "0" položaju.
Ukoliko je traženi "S" veći od ponuđenog potrebno je definirati "S" ili dubinu ormara (L+S).
Minimalna udaljenost od šarke 150 mm.
Glavna sklopka ujedno i sklopka za nužno isklapanje (izv. 88).

*Padlocking only in "0".
Door-opening only in "0" position.
When required "S" is bigger then offered, it is necessary to define "S" or depth of the board (L+S). Minimal distance to the door-hinge 150 mm.
Main switch with emergency (optional extra 88).*



| | RUČICA HANDLE | ČEONA PLOČA COVER PLATE | PREDNJA PLOČA FRONT PLATE | Y KOD / CODE |
|----|------------------|----------------------------|------------------------------|-----------------|
| 87 | crna / black | crna / black | crna / black | |
| | siva / grey | siva / grey | siva / grey | 20 |
| 88 | crvena / red | žuta / yellow | žuta / yellow | 40 |

iii / or
GX16 O 87 88
GX16H O 87 88
GX20 O 87 88
GX20H O 87 88
GX32 O 87 88
GX40 O 87 88

84



Otvaranje vrata samo u "0" položaju.
Sklopka sa žutom prednjom pločom, žutom podlogom i crvenom ručicom (1pol. - shema 90; 2pol. - shema 91; 3pol. - shema 10; 4pol. - shema 92). Ukoliko je traženi "S" veći od ponuđenog potrebno je definirati "S" ili dubinu ormara (L+S).
Minimalna udaljenost od šarke 150 mm.

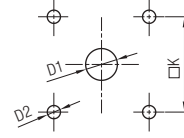
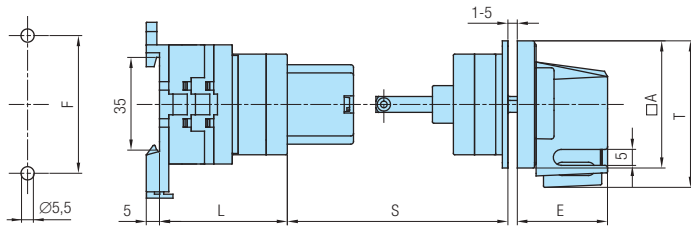
*Door-opening only in "0" position.
Switch with yellow front plate, yellow escutcheon plate and red handle (1-pole: scheme 90; 2-pole: scheme 91; 3-pole: scheme 10; 4-pole: scheme 92). When required "S" is bigger then offered, it is necessary to define "S" or depth of the board (L+S).
Minimal distance to the door-hinge 150 mm.*

GX16 O 84
GX16H O 84
GX20 O 84
GX20H O 84
GX32 O 84
GX40 O 84

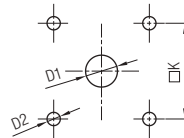
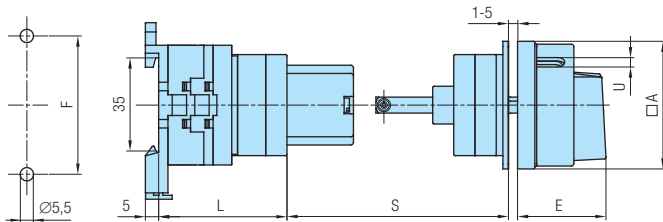
MJERNE SKICE *DIMENSIONAL DRAWINGS* (mm)

Plan bušenja / *Drilling plan*
Stražnji lim / *Rear panel*

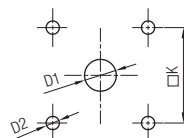
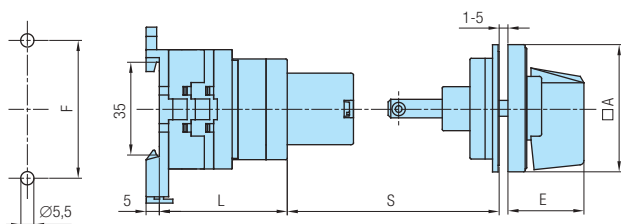
Plan bušenja / *Drilling plan*
Prednji lim / *Front panel*



| Tip Type | Oznaka / Marking | | | | | | | | L | | | |
|--------------|------------------|----|----|------|----|----|-------|----|----|------|--------|-------|
| | A | D1 | D2 | E | F | K | S | T | 1 | 2 | 3...12 | |
| GX 16 | 48 | 12 | 5 | 34,5 | 52 | 36 | 45-55 | 57 | 40 | 48,5 | 57 | 133,5 |
| GX 20 | 48 | 12 | 5 | 34,5 | 52 | 36 | 45-55 | 57 | 40 | 48,5 | 57 | 133,5 |



| Tip Type | Oznaka / Marking | | | | | | | | L | | | |
|---------------|------------------|----|----|------|----|----|---|-------|----|------|--------|-------|
| | A | D1 | D2 | E | F | K | U | S | 1 | 2 | 3...12 | |
| GX 16 | 48 | 12 | 5 | 34,2 | 52 | 36 | 5 | 45-55 | 40 | 48,5 | 57 | 133,5 |
| GX 16H | 65 | 12 | 5 | 38 | 52 | 48 | 6 | 45-55 | 40 | 48,5 | 57 | 133,5 |
| GX 20 | 48 | 12 | 5 | 34,2 | 52 | 36 | 5 | 45-55 | 40 | 48,5 | 57 | 133,5 |
| GX 20H | 65 | 12 | 5 | 38 | 52 | 48 | 6 | 45-55 | 40 | 48,5 | 57 | 133,5 |
| GX 32 | 65 | 14 | 5 | 38 | 68 | 48 | 6 | 45-55 | 51 | 63 | 75 | 183 |
| GX 40 | 65 | 14 | 5 | 38 | 68 | 48 | 6 | 45-55 | 51 | 63 | 75 | 183 |



| Tip Type | Oznaka / Marking | | | | | | | | L | | | |
|---------------|------------------|----|----|------|----|----|-------|----|------|----|--------|--|
| | A | D1 | D2 | E | F | K | S | | 1 | 2 | 3...12 | |
| GX 16 | 48 | 12 | 5 | 26,5 | 52 | 36 | 45-55 | 40 | 48,5 | 57 | 133,5 | |
| GX 16H | 65 | 12 | 5 | 34,5 | 52 | 48 | 45-55 | 40 | 48,5 | 57 | 133,5 | |
| GX 20 | 48 | 12 | 5 | 26,5 | 52 | 36 | 45-55 | 40 | 48,5 | 57 | 133,5 | |
| GX 20H | 65 | 12 | 5 | 34,5 | 52 | 48 | 45-55 | 40 | 48,5 | 57 | 133,5 | |
| GX 32 | 65 | 14 | 5 | 34,5 | 68 | 48 | 45-55 | 51 | 63 | 75 | 183 | |
| GX 40 | 65 | 14 | 5 | 34,5 | 68 | 48 | 45-55 | 51 | 63 | 75 | 183 | |

POSEBNE IZVEDBE *OPTIONAL EXTRAS*

KOD *CODE*

PLASTIČNO KUĆIŠTE
PLASTIC CASING



28

Blokiranje lijevog smjera okretanja.

The left direction is blocked.

| | | | |
|------|-------|---|----|
| GX16 | | P | 28 |
| GX20 | | P | 28 |
| GX32 | | P | 28 |
| GX40 | | P | 28 |



24

Standardna sklopka sa žutom podlogom i crvenom ručicom (1pol. - shema 90; 2pol. - shema 91; 3pol. - shema 10; 4pol. - shema 92).

Standard switch with yellow escutcheon plate and red handle (1-pole: scheme 90; 2-pole: scheme 91; 3-pole: scheme 10; 4-pole: scheme 92).

| | | | |
|------|-------|---|----|
| GX16 | | P | 24 |
| GX20 | | P | 24 |
| GX32 | | P | 24 |
| GX40 | | P | 24 |



15

Standardno ugrađena crvena svjetiljka (230 V), desno dolje. Mogući naponi 110, 400 V, te zelena boja svjetiljke (potrebno definirati). Na poseban zahtjev ugrađujemo i drugu svjetiljku lijevo dolje.

In a standard manner, the red lamp (230 V) is built in the right bottom corner. Possible voltages are 110, 400 V and green lamp, too (please define). On special request second lamp can be built in the left bottom corner.

| | | | |
|------|-------|---|----|
| GX16 | | P | 15 |
| GX20 | | P | 15 |
| GX32 | | P | 15 |
| GX40 | | P | 15 |



06 Zaključavanje samo u "0"
(Vidi str. 10 i 12)

23 Locking only in "0"
25 (See pages 10 and 12)

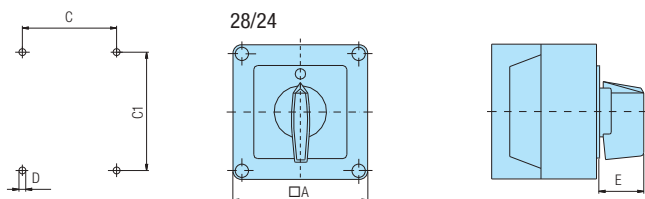
| | MOGUĆNOSTI POSSIBILITY | RUČICA HANDLE | ČEONA PLOČA COVER PLATE | KUĆIŠTE CASING |
|----|---------------------------|------------------|----------------------------|-------------------|
| 06 | | siva / grey | siva / grey | sivo / grey |
| 23 | | crna / black | crna / black | sivo / grey |
| 25 | | crvena / red | žuta / yellow | sivo / grey |

| | | | | | |
|------|-------|---|----|----|----|
| GX16 | | P | 06 | 23 | 25 |
| GX20 | | P | 06 | 23 | 25 |
| GX32 | | P | 06 | 23 | 25 |
| GX40 | | P | 06 | 23 | 25 |

ili / or

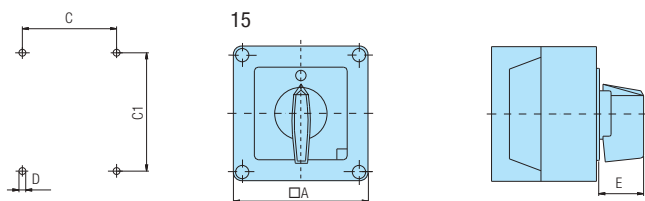
MJERNE SKICE *DIMENSIONAL DRAWINGS* (mm)

Plan bušenja / *Drilling plan*
 Stražnji lim / *Rear panel*



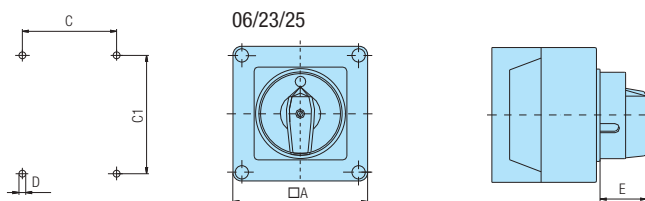
28/24/15

| Tip Type | Tip kućišta Casing size | Broj elemenata Number of elements | | □A | C | C1 | D | E |
|----------------------------------|----------------------------|--------------------------------------|------------|-----|----|------|-----|----|
| | | L | L1 | | | | | |
| GX 16 GX 20 | 90x90 | 1-2 | 3-5 | 90 | 63 | 79 | 4,5 | 25 |
| GX 16 GX 20 GX 32 GX 40 | 110x110 | 1-3 1-2 | 4-7 3-4 | 110 | 83 | 98,4 | 4,5 | 32 |



06/23/25

| Tip Type | Tip kućišta Casing size | Broj elemenata Number of elements | | □A | C | C1 | D | E |
|----------------------------------|----------------------------|--------------------------------------|------------|-----|----|------|-----|------|
| | | L | L1 | | | | | |
| GX 16 GX 20 | 90x90 | 1-2 | 3-5 | 90 | 63 | 79 | 4,5 | 28 |
| GX 16 GX 20 GX 32 GX 40 | 110x110 | 1-3 1-2 | 4-7 3-4 | 110 | 83 | 98,4 | 4,5 | 38,5 |



REZERVNI DIJELOVI *ACCESSORIES*

RUČICE *HANDLES*

| | | NARUŽBENI KOD / <i>ORDERING CODE</i> | | | | |
|--|----------------------|--------------------------------------|--------|--------|--------|--------|
| | | Veličina / <i>Size</i> | | | | |
| | Boja / <i>Colour</i> | A0 | A1 | | A2 | |
| | siva / <i>grey</i> | R011-6 | R111-6 | R111-7 | R211-6 | R211-7 |
| | crvena / <i>red</i> | R012-6 | R112-6 | R112-7 | R212-6 | R212-7 |
| | crna / <i>black</i> | R014-6 | R114-6 | R114-7 | R214-6 | R214-7 |
| | žuta / <i>yellow</i> | R015-6 | R115-6 | R115-7 | R215-6 | R215-7 |
| | siva / <i>grey</i> | | R121-6 | R121-7 | R221-6 | R221-7 |
| | crvena / <i>red</i> | | R122-6 | R122-7 | R222-6 | R222-7 |
| | crna / <i>black</i> | | R124-6 | R124-7 | R224-6 | R224-7 |
| | žuta / <i>yellow</i> | | R125-6 | R125-7 | R225-6 | R225-7 |

Zadnji broj u kodu ručice (6, 7, 8 ili 9) označava kvadrat osovine na koju se ručica montira (kota □N na mjernoj skici na strani 5).

Last number in ordering code (6, 7, 8 or 9) means the shaft square required for requested handle (dimension □N from dim. drawing on page 5).

■ - standardna ručica za određenu ugradnu veličinu / *standard handle for defined mounting size*

PREDNJE PLOČE *FRONT PLATES*

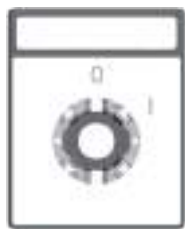


Prednja ploča standardnog oblika. Moguća za sve veličine (A0, A1, A2).
Izrađuje se standardno u crnoj boji, a prema narudžbi u sivoj i žutoj.
Standardne podloge prednjih ploča vidi na stranicama 38-40.

Front plate - standard form. Available at all sizes (A0, A1, A2).

In a standard manner it is being produced in black colour; grey and yellow colour available on request.

Standard escutcheon plates of front plates see on pages 38-40.



Prednja ploča s natpisom. Moguća za sve veličine (A0, A1, A2).
Izrađuje se standardno u crnoj boji, a prema narudžbi u sivoj i žutoj.
Standardne podloge prednjih ploča vidi na stranicama 38-40.

Front plate with title. Available at all sizes (A0, A1, A2).

In a standard manner it is being produced in black colour; grey and yellow colour available on request.

Standard escutcheon plates of front plates see on pages 38-40.

PRODUŽENA OSOVINA *EXTENDED SHAFT*



Spojka za vrata s mogućnošću podešavanja dužine osovine, 70 mm max.

Adjustable door - coupling extension shaft, 70 mm length max.

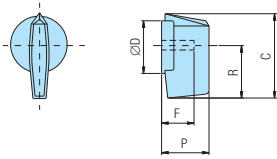
MODUL ZA SPECIJALNU IZVEDBU "108D" *MODUL FOR OPTIONAL EXTRA "108D"*



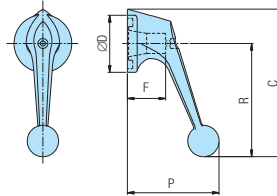
OSOVINA ZA SPECIJALNU IZVEDBU "102" *SHAFT FOR OPTIONAL EXTRA "102"*



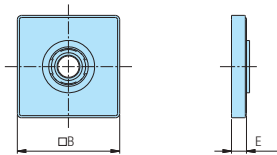
MJERNE SKICE *DIMENSIONAL DRAWINGS* (mm)



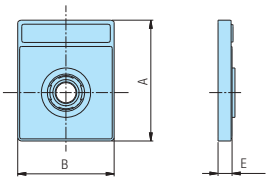
| Veličina Size | ØD | F | C | P | R |
|------------------|------|------|------|----|------|
| A0 | 27,5 | 16 | 39,5 | 19 | 23,5 |
| A1 | 35 | 20 | 53 | 25 | 32 |
| A2 | 48 | 26,5 | 70,5 | 32 | 43,5 |



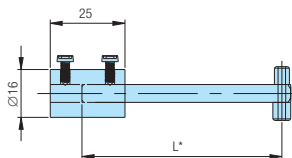
| Veličina Size | ØD | F | C | P | R |
|------------------|----|------|-------|----|------|
| A1 | 35 | 23 | 81,5 | 52 | 61,5 |
| A2 | 48 | 26,5 | 105,5 | 65 | 79,5 |



| Veličina Size | Oznaka / Marking | |
|------------------|------------------|-----|
| | □B | E |
| A0 | 48 | 7,5 |
| A1 | 65 | 9,5 |
| A2 | 90 | 9,5 |



| Veličina Size | Oznaka / Marking | | |
|------------------|------------------|----|-----|
| | A | B | E |
| A0 | 60 | 48 | 7,5 |
| A1 | 80,5 | 65 | 9,5 |
| A2 | 110 | 90 | 9,5 |



| L | Narudžbeni kod Ordering code |
|-----|---------------------------------|
| 70 | B85992 |
| 150 | B85893 |
| 200 | B85894 |

* Dužinu skratiti po potrebi

* Possible to cut desired length

| Modul 108D | Narudžbeni kod Ordering code |
|---------------|---------------------------------|
| | B71717 |

| L | Izvedba Option | Narudžbeni kod Ordering code |
|-----|-------------------|---------------------------------|
| 100 | 102 | B71840 |
| 200 | 102-200 | B71841 |

REZERVNI DIJELOVI *ACCESSORIES*

PODLOGA "N" *ESCUTCHEON PLATE "N"*

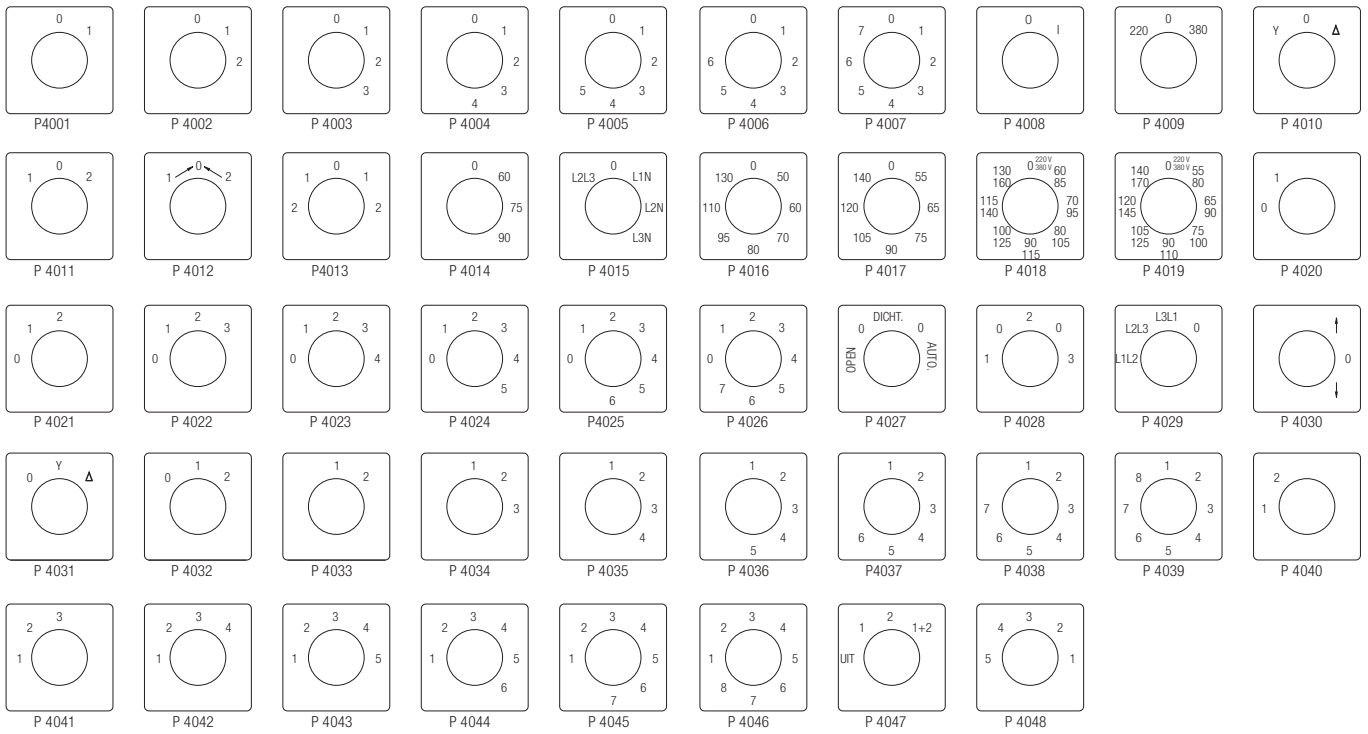
| | | | | | | | | | |
|---|------------------------|---------------------------|--------------------------|-----------------------|------------------|---------------------------|-----------------------|------------------------|-----------------------|
| GLAVNA SKLOPKA N 01 | MAIN SWITCH N 02 | HAUPTSCHALTER N 03 | NUŽNO ISKLAPANJE N 04 | EMERGENCY OFF N 05 | NOT-AUS N 06 | VOLTMETAR N 07 | VOLTMETER N 08 | AMPERMETAR N 09 | AMMETER N 10 |
| AMPERMETER N 11 | VOLTM.-AMPERM. N 12 | VOLTMETER-AMMETER N 13 | MOTOR N 14 | MOTOR CONTROL N 15 | PUMPA N 16 | PUMP N 17 | PUMPE N 18 | GRIJANJE N 19 | HEIZUNG N 20 |
| HLADENJE N 21 | VENTILATOR N 22 | RASVJETA N 23 | BIRAČ N 24 | WAHLSCHALTER N 25 | SELECTOR N 26 | REGULACIJA BRZINE N 27 | SPEED CONTROL N 28 | SINKRONIZACIJA N 29 | SYNCHRONIZING N 30 |
| <div style="border: 1px solid black; width: 100px; height: 15px; margin-bottom: 5px;"></div> N 31 | | | | | | | | | |

30° KUT ZAKRETA *SWITCHING*

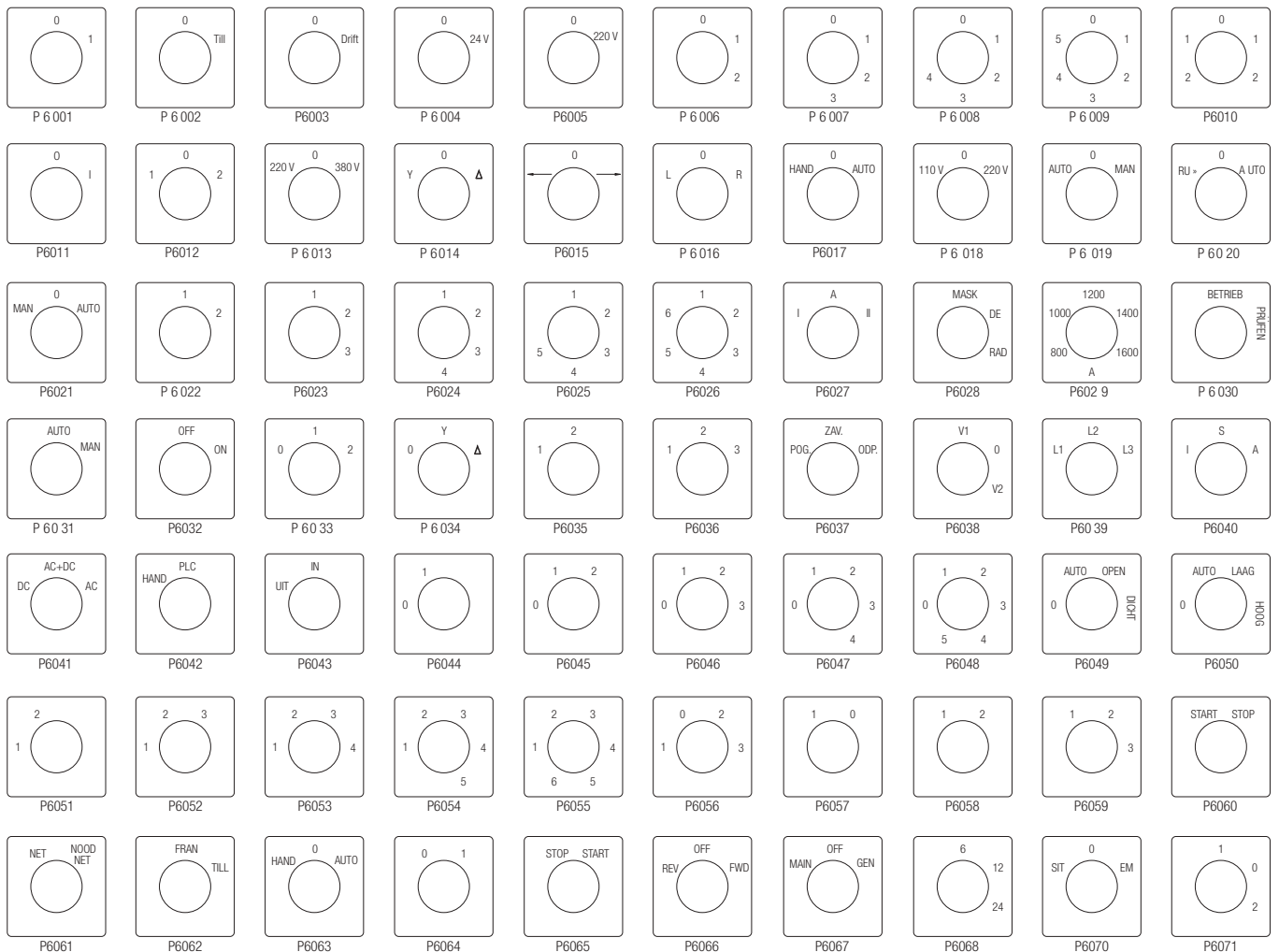
| | | | | | | | | | |
|--|--|--|--|--|--|--|--|--|--|
| | | | | | | | | | |
| | | | | | | | | | |
| | | | | | | | | | |
| | | | | | | | | | |
| | | | | | | | | | |
| | | | | | | | | | |
| | | | | | | | | | |
| | | | | | | | | | |
| | | | | | | | | | |
| | | | | | | | | | |

PODLOGE *ESCUTCHEON PLATES*

45° KUT ZAKRETA *SWITCHING*



60° KUT ZAKRETA *SWITCHING*



PODLOGE *ESCUTCHEON PLATES*

90° KUT ZAKRETA *SWITCHING*

| | | | | | | | | | |
|--|--|--|--|--|--|--|--|--|--|
| | | | | | | | | | |
| | | | | | | | | | |
| | | | | | | | | | |
| | | | | | | | | | |
| | | | | | | | | | |
| | | | | | | | | | |
| | | | | | | | | | |
| | | | | | | | | | |

RAZLIČITI KUTEVI ZAKRETA *MISCELLANEOUS SWITCHING*

| | | | | | | | | | |
|--|--|--|--|--|--|--|--|--|--|
| | | | | | | | | | |
| | | | | | | | | | |
| | | | | | | | | | |

PREGLED POSEBNIH IZVEDBI PO STRANICAMA *OPTIONAL EXTRAS - REVIEW*

| POSEBNA IZVEDBA <i>OPTIONAL EXTRA</i> | Stranica <i>Page</i> | Prednja ploča s natpisom <i>Front plate with title (N)</i> | Mogućnost kombinacije posebnih izvedbi <i>Possible optional extra combinations</i> | | | | |
|--|-------------------------|---|---|----|-----|----|----|
| | | | +39D | | +51 | | |
| | | | A0 | A1 | A0 | A1 | A2 |
| 02 | 24 | + | | | + | + | + |
| 05 | 14 | + | | | | | |
| 06 | 12 | + | + | + | + | + | + |
| 06D | 12 | | | | | | |
| 07 | 30 | + | | | + | + | + |
| 08 | 30 | + | | | + | + | + |
| 09 | 14 | | | | | | |
| 10 | 18 | | | | | | |
| 11 | 14 | | | | | | |
| 12 | 18 | | | | | | |
| 13 | 14 | + | | | | | |
| 15 | 28 | + | + | + | | | |
| 16 | 22 | + | | | | | |
| 17 | 22 | + | | | | | |
| 20 | 16 | | | | | | |
| 21 | 28 | + | | | | | |
| 22 | 28 | + | | | | | |
| 23 | 10 | + | + | + | + | + | |
| 24 | 10 | + | + | + | + | + | + |
| 25 | 10 | + | + | + | + | + | |
| 26 | 22 | + | | | | | |
| 27 | 22 | + | | | | | |
| 28 | 28 | + | + | + | + | + | + |
| 29 | 18 | | | | | | |
| 29D | 18 | | | | | | |
| 29K | 20 | | | | | | |
| 30 | 18 | | | | | | |
| 31 | 26 | | | | | | |
| 36 | 16 | | | | | | |
| 37 | 16 | | | | | | |
| 38D | 26 | | | | | | |

| POSEBNA IZVEDBA <i>OPTIONAL EXTRA</i> | Stranica <i>Page</i> | Prednja ploča s natpisom <i>Front plate with title (N)</i> | Mogućnost kombinacije posebnih izvedbi <i>Possible optional extra combinations</i> | | | | |
|--|-------------------------|---|---|----|-----|----|----|
| | | | +39D | | +51 | | |
| | | | A0 | A1 | A0 | A1 | A2 |
| 38T | 26 | | | | | | |
| 39D | 26 | | | | + | + | |
| 39T | 26 | | | | | | |
| 41 | 18 | | | | | | |
| 41D | 20 | | | | | | |
| 41K | 20 | | | | | | |
| 42 | 18 | + | + | | + | | |
| 47 | 16 | | | | | | |
| 48 | 26 | | | | | | |
| 48D | 26 | | | | | | |
| 49 | 26 | | | | | | |
| 51 | 10 | + | + | + | | | |
| 56 | 12 | + | + | | + | | |
| 57 | 30 | + | + | + | + | + | |
| 58 | 30 | + | | | + | + | |
| 58D | 30 | + | | | + | + | |
| 67 | 16 | | | | | | |
| 71 | 20 | | | | | | |
| 72 | 20 | | | | | | |
| 73 | 30 | + | + | | + | | |
| 75 | 30 | + | + | | + | | |
| 76 | 20 | | | | | | |
| 77 | 20 | | | | | | |
| 84 | 32 | + | + | + | + | + | |
| 85 | 32 | + | + | | + | | |
| 86 | 30 | + | + | | + | | |
| 87 | 32 | + | + | + | + | + | |
| 88 | 32 | + | + | + | + | + | |
| 102 | 24 | + | | | + | + | |
| 108D | 24 | + | | | + | + | |
| 258 | 24 | + | + | + | + | + | |

 39D - montaža sklopke s 2 vijka / *switch mounting with 2 screws*

 51 - stupanj zaštite IP65 / *protection degree IP65*
 - sadržano u toj posebnoj izvedbi / *included in this optional extra*

■ ROTARY CAM SWITCHES GX



www.LovatoElectric.hr

LOVATO ELECTRIC d.o.o.

Borongajska cesta 81 b
10002 ZAGREB

HRVATSKA

Tel +385 (0)1 2369 243, 2369 203

prodaja@LovatoElectric.hr

www.LovatoElectric.hr



Follow us

The products described in this document are subject to updates or modifications at any time. The descriptions, technical and functional information, illustrations and instructions in the leaflet are to be considered as purely illustrative, and consequently have no contractual relevance. Remember also that the products themselves must be used by qualified personnel, in compliance with current plant engineering and installation standards, in order to avoid injury to persons or damage to property.