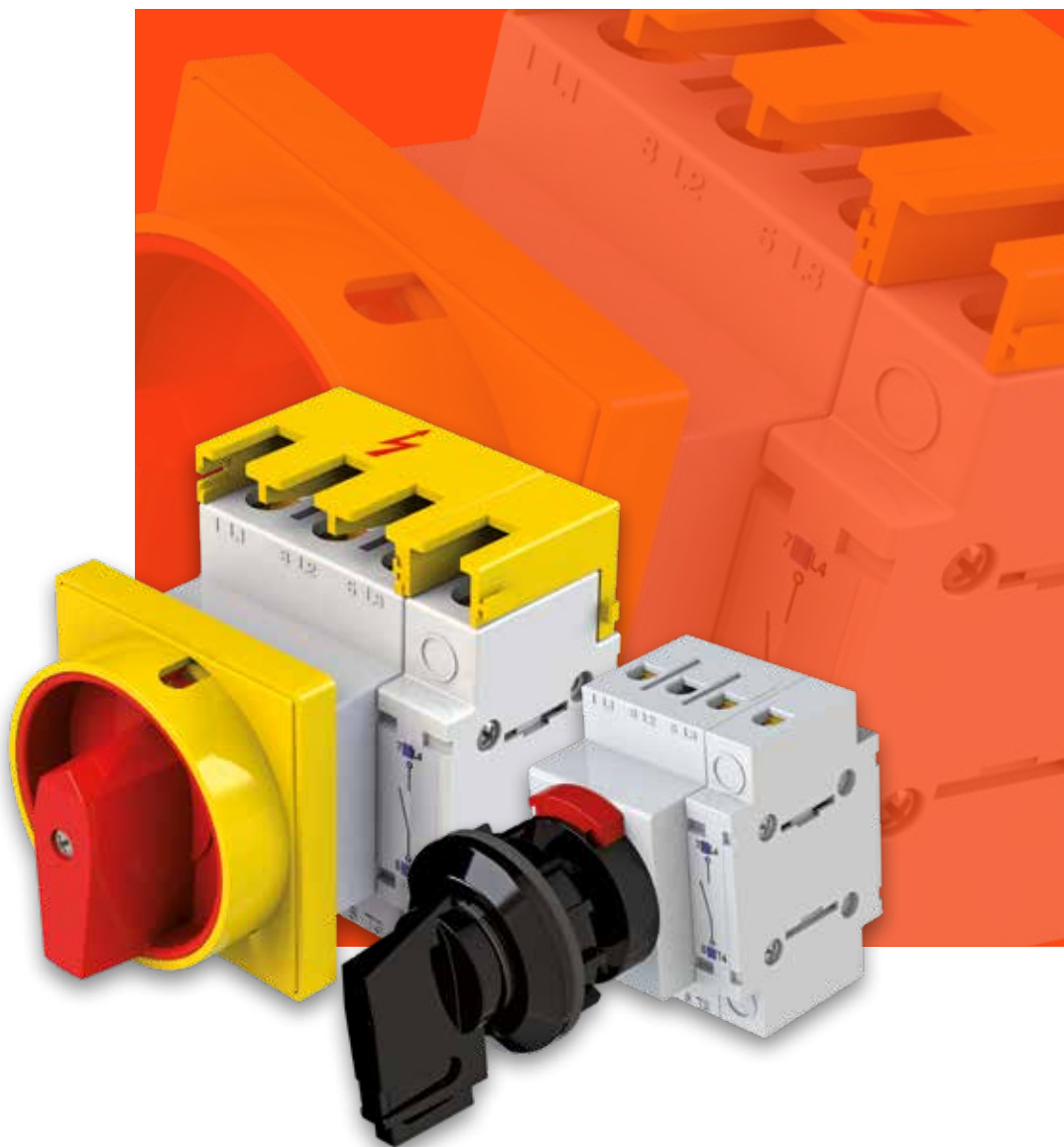
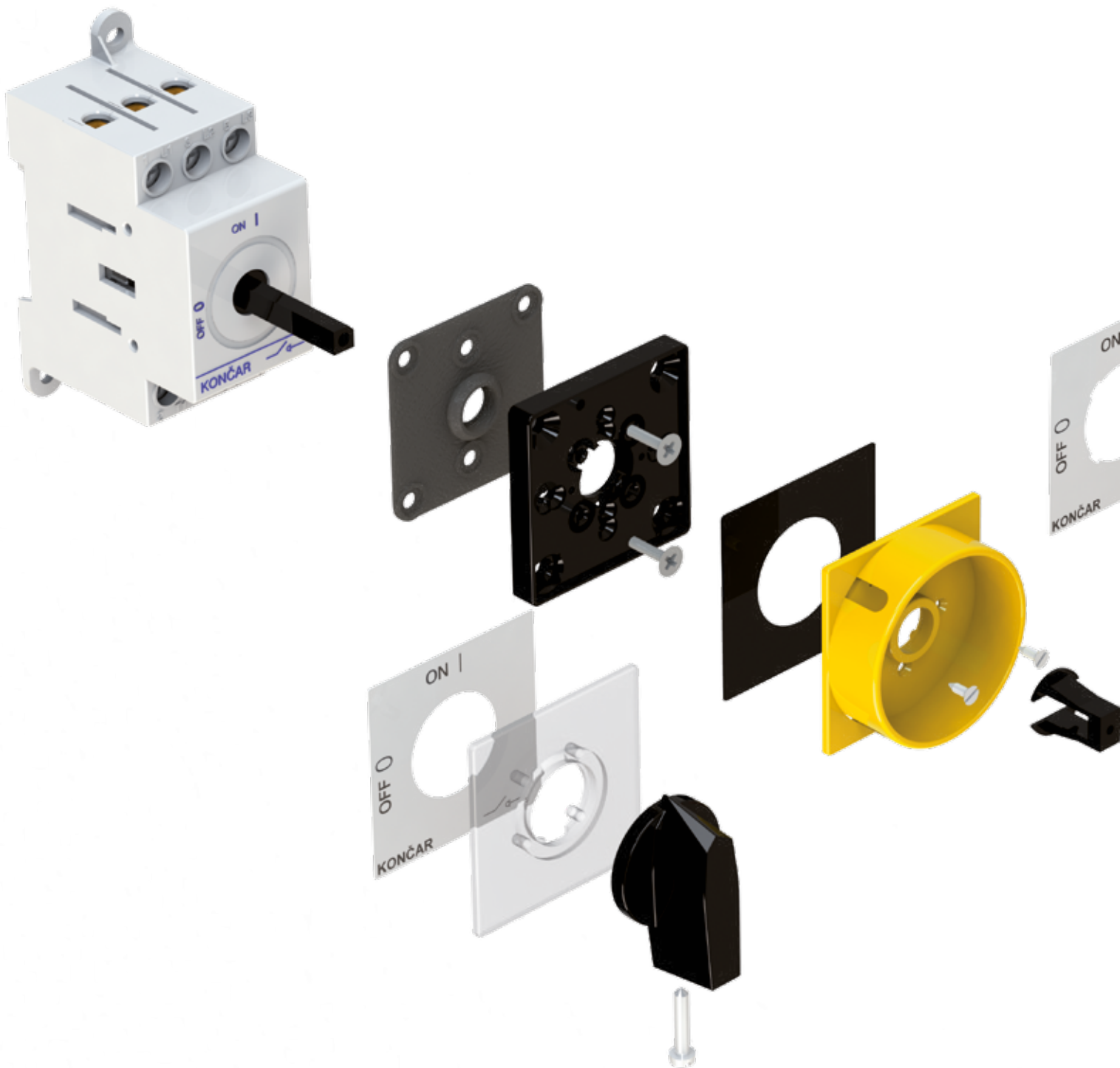


SWITCH DISCONNECTORS CS SERIES

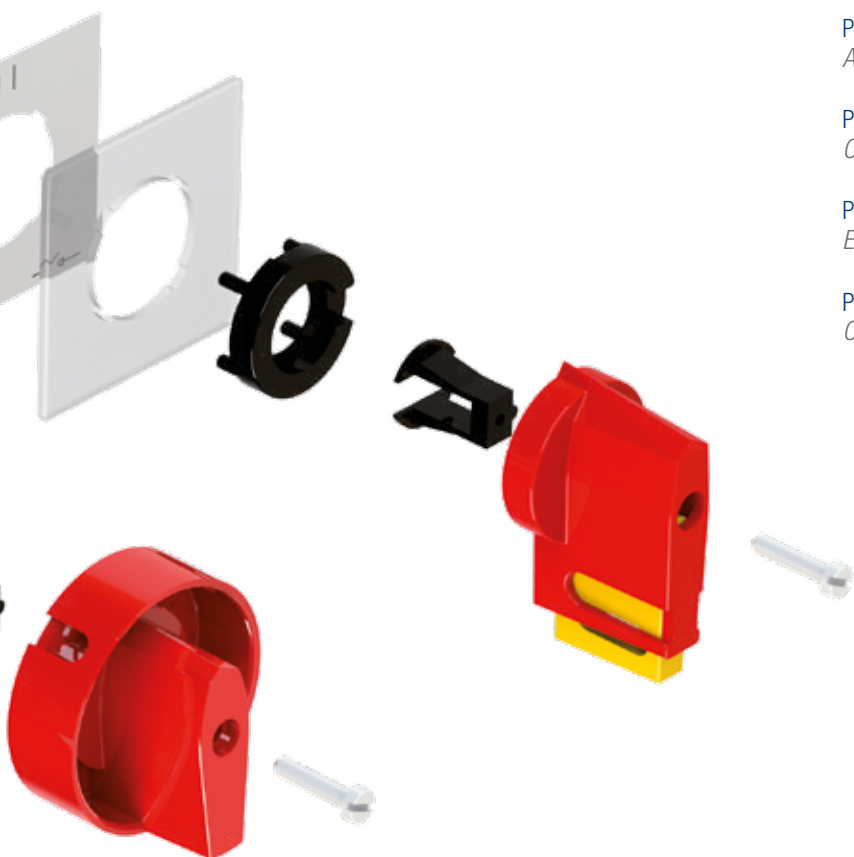


 **Lovato**
KONČAR



SADRŽAJ *CONTENTS*

SADRŽAJ <i>CONTENTS</i>	1
OPĆENITO <i>GENERAL</i>	2
TEHNIČKI PODACI <i>TECHNICAL DATA</i>	3
UGRADNE VELIČINE <i>MOUNTING SIZES</i>	3
MJERNE SKICE <i>DIMENSIONAL DRAWINGS</i>	4-5
NARUDŽBENI KOD <i>ORDERING CODE</i>	6-7
STANDARDNI OBLICI UGRADNJE <i>STANDARD MOUNTING FORMS</i>	7
PRIGRADNJE <i>ACCESSORIES</i>	8-9
POSEBNE IZVEDBE <i>OPTIONAL EXTRAS</i>	10-27
PODLOGE <i>ESCUTCHEON PLATES</i>	28
PREGLED SPECIJALNIH IZVEDBI PO STRANICAMA <i>OPTIONAL EXTRAS - REVIEW</i>	28





RASTAVNE SKLOPKE serije CS

Sklopke serije CS razvijene su prema najsvremenijim principima i dostignućima na području sklopnih aparata uz upotrebu visoko-kvalitetnih materijala i kontakata od srebrnih legura. Modularna konstrukcija sklopke omogućava naknadnu dogradnju sklopke, što znatno utječe na sniženje troškova skladištenja.

Prigradnje koje se mogu pričvrstiti na osnovnu sklopku s lijeve i/ili desne strane:

- 4. pol (N-pol)
- pomoćni kontakti 1NO + 1NC
- pomoćni kontakti 2NO
- stezaljka za uzemljenje
- stezaljka za N vodič

Zbog povećanih izolacijskih razmaka između otvorenih kontakata, sklopke CS serije su naročito pogodne za korištenje kao glavne sklopke i sklopke za nužno isklapanje.

Sklopke serije CS udovoljavaju normama IEC 60947-1, -3, IEC 60204, DIN EN 61058, UL 508, C22.2 No.14 itd.

Karakteristike:

- Tri ugradne (dimenzijske) veličine:
A0 veličina (16-25-32-40 A)
A1 veličina (40-63-80 A)
A2 veličina (100-125-160-200 A)
- Stupanj mehaničke zaštite - prednji sklop IP65, priključnice IP20 (za sklopke CS40-200 izvedba sa zaštitnim poklopcem priključnica)
- Pozitivno otvaranje kontakata (IEC 60947-5-1 Annex K)
- Obuhvatne stezaljke su u otvorenom položaju tako da je olakšano ožičenje sklopke.
- Montaža sklopke na DIN šinu ili pomoću vijaka
- Kod sklopki gdje se traži prednji sklop veći od standardnog, sklopke imaju oznaku **H** (npr. CS25H)

POTVRDE APPROVALS

	CS16 CS16H	CS25 CS25H	CS32 CS32H	CS40R CS40RH	CS40	CS63	CS80	CS100	CS125	CS160	CS200
	■	■	■	■	■	■	■	■	■	■	■
	■	■	■	■	■	■	■				

SWITCH DISCONNECTORS series CS

Switch disconnectors series CS have been developed to the latest achievements in the field of switching devices through the application of quality insulation materials and contacts made with silver alloys. Modular construction allows subsequent changes, so stocking costs can be lowered.

Elements that can be fixed to the left and/or right side of the switch:

- fourth pole (N-pole)
- auxiliary contacts 1NO + 1NC
- auxiliary contacts 2NO
- PE terminal
- N terminal

Because of the larger opening clearances the switches series CS are particularly suitable for main switches (switch disconnectors) and safety switches (emergency-off switches).

Switches series CS are built in accordance with the following standards: IEC 60947-1, -3, IEC 60204, DIN EN 61058, UL 508, C22.2 No.14 etc.

General:

- Three modular frame sizes:
A0 size (16-25-32-40 A)
A1 size (40-63-80 A)
A2 size (100-125-160-200 A)
- Mechanical protection degree - front part IP65, connection terminals IP20 (for switches CS40-200 option with protection cover is required)
- Positive contacts opening (IEC 60947-5-1 Annex K)
- Loosely screwed "self-lifting" clamps offer easier connection
- DIN-rail or screw mounting
- At the switches where the front part is bigger than standard size required, the switches are marked with H (e.g. CS25H)

TIP SKLOPKE <i>SWITCH TYPE</i>			CS16 CS16H	CS25 CS25H	CS32 CS32H	CS40R CS40RH	CS40	CS63	CS80	CS100	CS125	CS160	CS200		
Nazivni izolacijski napon <i>Rated insulation voltage</i>	U_i	(IEC 60947)	V	690	690	690	690	690	690	1000 ⁽²⁾	1000 ⁽²⁾	1000 ⁽²⁾	1000 ⁽²⁾		
Nazivni udarni podnosivi napon <i>Rated impulse withstand voltage</i>	U_{imp}	(III/3) ⁽¹⁾	kV	6	6	6	6	6	6	8	8	8	8		
Nazivna termička struja <i>Rated thermal current</i>	I_{th}	(IEC 60947)	A	16	25	32	40	40	63	80	100	125	160	200	
Nazivna kratkotrajna podnosiva struja <i>Rated short-time withstand current</i>	I_{cw}	/ 1 sec.	A	400	500	600	600	1100	1300	1400	2600	2800	3000	3000	
Max. veličina osigurača za zaštitu od kratkog spoja <i>Max. fuse size for short circuit protection</i>	I_n	gG charac.	10kA	A	35	35	35	40	80	80	80	160	160	160	200
			25kA	A	32	32	32	32	63	63	63	160	160	160	160
			50kA	A	32	32	32	32	63	63	63	160	160	160	160
Nazivna pogonska struja <i>Rated operational current</i>	I_e	AC1/AC21A	A	16	25	32	40	40	63	80	100	125	160	200	
Motorska sklopka za kateg. upotrebe <i>Motor switch in utilization category</i>	AC3	IEC/VDE/BS	220/240V	kW	3,7	5,5	7,5	7,5	11	11	15	30	33	37	37
			3 faze 380/440V	kW	5,5	7,5	11	11	15	22	25	55	59	63	63
	3 faze	500V	kW	7,5	11	15	15	22	25	30	59	63	75	75	
			690V	kW	7,5	11	15	15	22	25	25	40	45	45	45
	AC23	IEC/VDE/BS	220/240V	kW	4	7,5	9	9	11	15	18,5	30	37	40	40
			3 faze 380/440V	kW	7,5	11	15	15	18,5	25	30	59	63	75	75
3 faze			500V	kW	9	15	15	15	22	30	37	63	75	80	80
			690V	kW	9	15	15	15	22	30	30	51	55	55	55
Presjek vodiča <i>Conductor size</i>	r = jednožilni / <i>rigid</i> f = višezilni / <i>flexible</i>	max. r/f	mm ² AWG	10/6 8/10	10/6 8/10	10/6 8/10	10/6 8/10	25/16 4/6	25/16 4/6	25/16 4/6	70/50 00/0	70/50 00/0	70/50 00/0	95/70 ⁽³⁾ 000/11 ⁽³⁾	

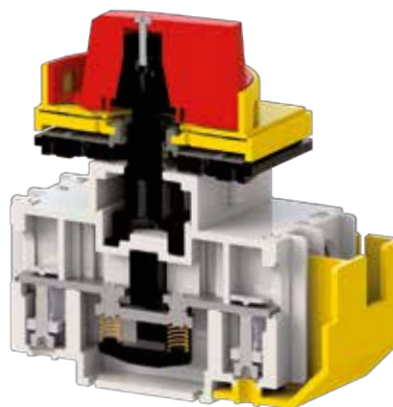
(1) vrijedi za mreže sa uzemljenim zvjezdastim, prenaponska kategorija III, stupanj zagađenja 3 / *valid for neutral earthed systems, overvoltage category III, pollution degree 3*

(2) iznad 690V samo za kategoriju upotrebe AC20A / *suitable for no load switching applications (AC20A) above 690V*

(3) kabelski priključak / *cable lug*

POMOĆI KONTAKTI *AUXILIARY CONTACTS*

Nazivni izolacijski napon <i>Rated insulation voltage</i>	U_i	(IEC 60947)	V	690	
Nazivna termička struja <i>Rated thermal current</i>	I_{th}	(IEC 60947)	A	10	
Nazivna pogonska struja <i>Rated operational current</i>	I_e	AC15	110V	A	8
			220-240V	A	8
			380-400V	A	3
			660-690V	A	1
Presjek vodliča <i>Conductor size</i>	r = jednožilni / <i>rigid</i> f = višezilni / <i>flexible</i>	max. r/f	mm ² AWG	1,5/1,5 14/14	



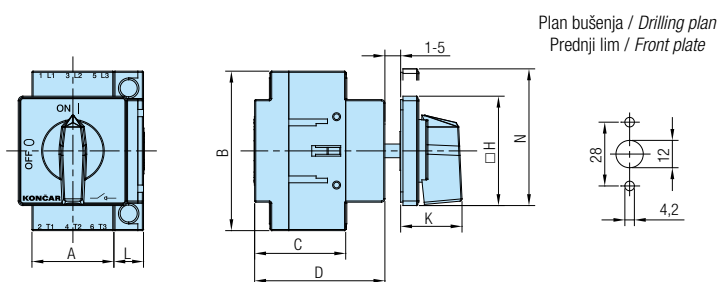
UGRADNE VELIČINE *MOUNTING SIZES*

A0	A1	A2
CS16 CS25 CS32 CS40R	CS16H CS25H CS32H CS40RH	CS100 CS125 CS160 CS200

MJERNE SKICE *DIMENSIONAL DRAWINGS* (mm)

CS16, CS25, CS32, CS40R, CS40, CS63, CS80

U - Ugradna sklopka *Front mounting*



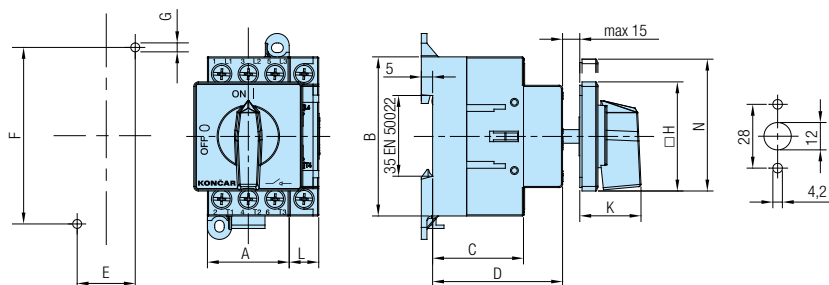
Plan bušenja / *Drilling plan*
Prednji lim / *Front plate*

Tip/Type	Oznaka / <i>Marking</i>						
	A	B	C	D	H	K	L
GS16 GS25 GS32 GS40R	36	70	40	57	48	26,5	13,5
GS40 GS63 GS80	54	76	40	57	65	34,5	18

O - Sklopka za odvojenu ugradnju *Rear mounting*

Plan bušenja / *Drilling plan*
Stražnji lim / *Rear plate*

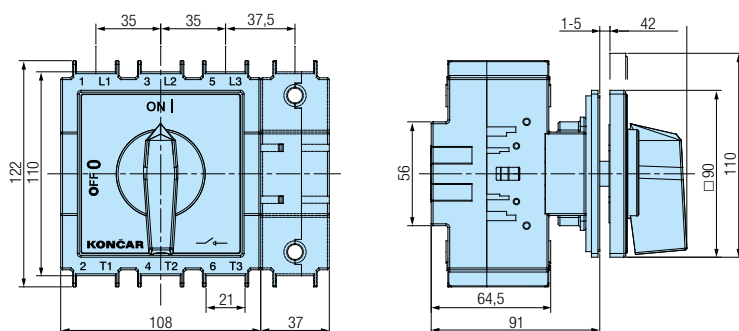
Plan bušenja / *Drilling plan*
Prednji lim / *Front plate*



Tip/Type	Oznaka / <i>Marking</i>									
	A	B	C	D	E	F	∅G	H	K	L
GS16 GS25 GS32 GS40R	36	70	40	57	25	78	4,5	48	26,5	13,5
GS40 GS63 GS80	54	76	40	57	40	88	5,5	65	34,5	18

CS100, CS125, CS160

U - Ugradna sklopka *Front mounting*

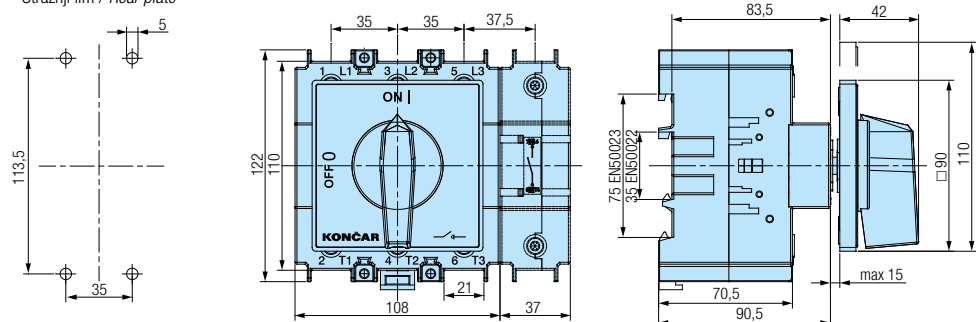


Plan bušenja / *Drilling plan*
Prednji lim / *Front plate*

O - Sklopka za odvojenu ugradnju *Rear mounting*

Plan bušenja / *Drilling plan*
Stražnji lim / *Rear plate*

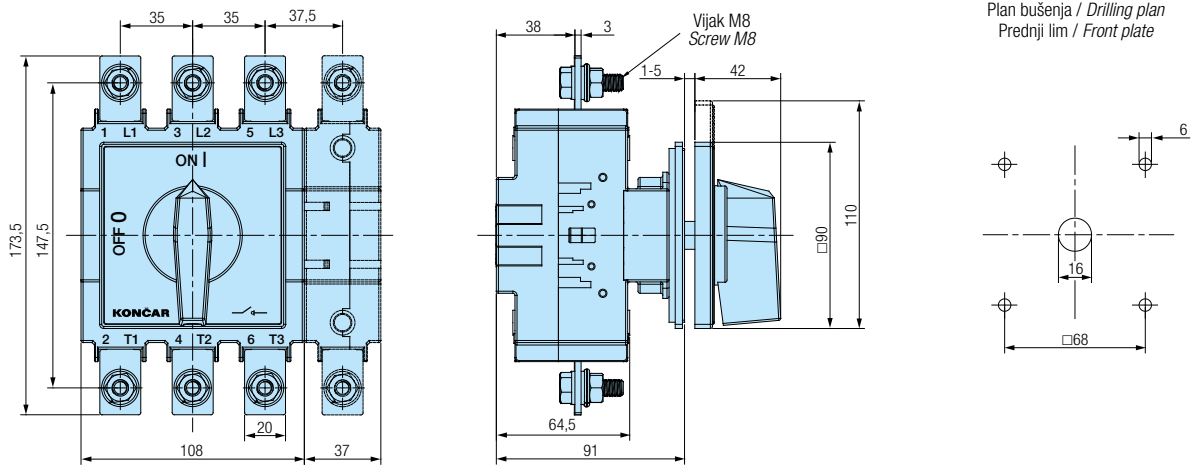
Plan bušenja / *Drilling plan*
Prednji lim / *Front plate*



MJERNE SKICE *DIMENSIONAL DRAWINGS* (mm)

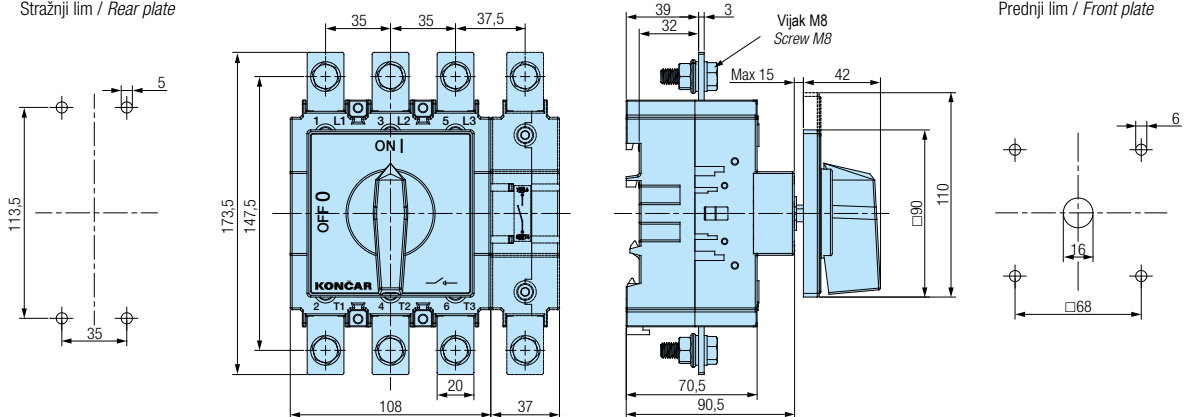
CS200

U - Ugradna sklopka *Front mounting*

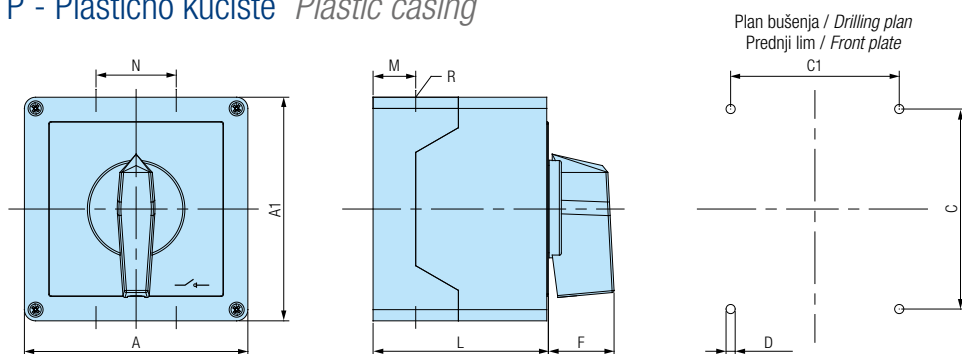


O - Sklopka za odvojenu ugradnju *Rear mounting*

Plan bušenja / *Drilling plan*
Stražnji lim / *Rear plate*



P - Plastično kućište *Plastic casing*



Tip/ Type	Oznaka / <i>Marking</i>										Uvodnice / <i>Conduit entries</i>		
	Tip kućišta <i>Housing size</i>	A	A1	C	C1	D	F	M	N	L	Zaštita <i>Protection</i>	R (Pg)	R (M...x1,5)
CS16 CS25 CS32 CS40R	110x110	110	110	98,4	83	4,5	32	21	39,5	85,5	IP65	4xPg21 ili / or 4xM25	
CS40 CS63 CS80	125x175	125	175	146	112	5,5	32	21	68	84,3	IP65	4xPg21+2Pg1 ili / or 4xM25+2xM16	
CS100 CS125 CS160 CS200	215x295	215	295	240	160	5	43	32	110	147,5	IP65	6xPg16 ili/or 6xPg21 ili/or 6xPg29	--

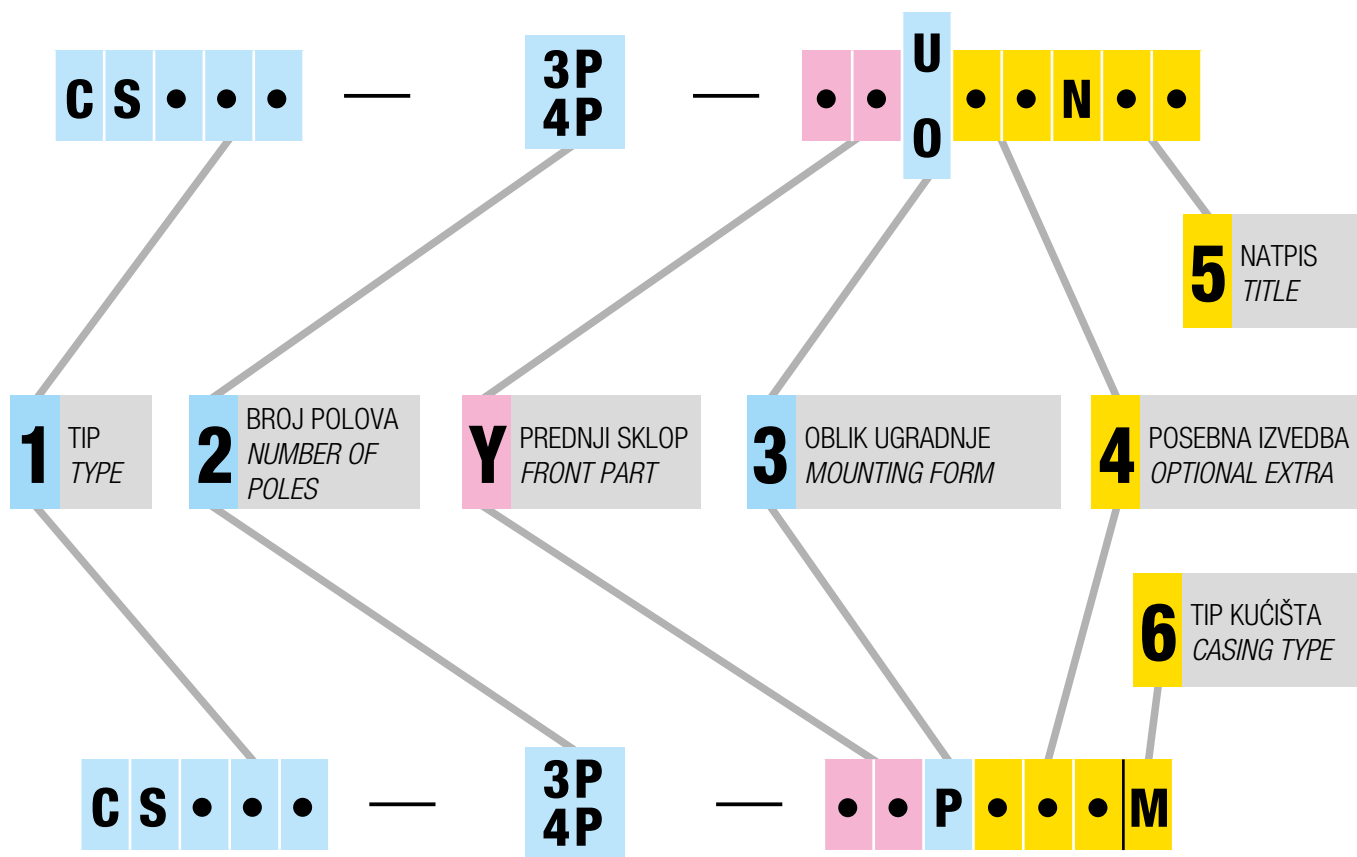
NARUDŽBENI KOD *ORDERING CODE*

Prilikom naručivanja sklopke potrebno je definirati:

- za **standardnu rastavnu sklopku** 3 tipa podataka **1 2 3**
- za sklopke s **posebnom izvedbom** maksimalno 5 tipova podataka **1 2 3 4 5** ili **1 2 3 4 6**
- za sklopku sa **specijalnim zahtjevima** maksimalno 6 tipova podataka **1 2 3 4 5 Y** ili **1 2 3 4 6 Y**

When ordering please define:

- for **standard switch disconnector** three data types **1 2 3**
- for switch with an **optional extra** max. 5 data types **1 2 3 4 5** or **1 2 3 4 6**
- for switch with **special requests** max. 6 data types **1 2 3 4 5 Y** or **1 2 3 4 6 Y**



OPIS

DESCRIPTION

1	Tip sklopke. Odabire se prema tehničkim zahtjevima i ugradbenoj veličini (vidi str. 3)	Switch type. To be chosen in accordance with the technical requests and mounting size (see page 3)
2	Broj polova	Number of poles
Y	Prednji sklop. Upisuje se samo ako se traži nestandardna kombinacija boja i oblika prednjeg sklopa. Kod standardne izvedberučica, prednja ploča i slova na sivoj podlozi su crni.	Front part. To be marked only when non-standard front part colour and form combination is required. For standard form - handle, front plate and text on the silver escutcheon plate are black.
3	Standardni oblici ugradnje (vidi str. 3) U - ugradna O - odvojena ugradnja P - plastično kućište	Standard mounting forms (see page 4) U - front mounting O - rear mounting P - plastic casing
4	Upisuje se ako se traži posebna izvedba (vidi str. 10 - 27)	To be marked when an optional extra is required (see pages 10 - 27)
5	"N" se upisuje ako se traži prednja ploča s natpisom	"N" is to be written when the front plate with a title is required
6	Kućišta se standardno isporučuju za kablanske uvednice tipa Pg. Za metričke kablanske uvednice potrebno je upisati "M"	Cases are supplied as standard for cable glands type Pg. For metric cable glands is necessary to enter "M"

Y - PREDNJI SKLOP *FRONT PART*

Tablice prikazuju moguće kombinacije boja prednjeg sklopa i pripadajuće kodne oznake. Prva linija odnosi se na **standardnu** kombinaciju za koju nije potrebno upisivati kod.

The tables show possible front part colour combinations and corresponding codes to be marked. The first line refers to the **standard** combination for which no code is to be marked.

1. OBLIK UGRADNJE:

Ugradna sklopka (U) ili sklopka za odvojenu ugradnju (O).

1. MOUNTING FORM:

Front mounting (U) or rear mounting (O).

Ručica <i>Handle</i>	Prednja ploča <i>Front plate</i>	Podloga <i>Escutch. plate</i>	Tekst <i>Text</i>	KOD / CODE		
				Y	Prednji sklop <i>Front part</i>	3 Oblik ugradnje <i>Mounting form</i>
crna <i>black</i>	crna <i>black</i>	siva <i>grey</i>	crna <i>black</i>			
crna <i>black</i>	crna <i>black</i>	bijela <i>white</i>	crna <i>black</i>		10	U ili / or O
crna <i>black</i>	crna <i>black</i>	crna <i>black</i>	bijela <i>white</i>		20	
siva <i>grey</i>	siva <i>grey</i>	siva <i>grey</i>	crna <i>black</i>		30	
siva <i>grey</i>	siva <i>grey</i>	bijela <i>white</i>	crna <i>black</i>		40	

PRIMJER: Za tropolnu rastavnu sklopku CS16, standardna kombinacija boja, ugradna, narudžbena oznaka glasi:

EXAMPLE: For 3 poles switch disconnector CS16, standard colour combination, front mounting, the ordering code is:

CS16 - 3P - U

Ista rastavna sklopka, ali sa sivom ručicom, sivom prednjom pločom, bijelom podlogom i crnim tekstom ima narudžbenu oznaku:

The same switch disconnector but with grey handle, grey front plate, white escutcheon plate, black text, has the ordering code:

CS16 - 3P - 40 U

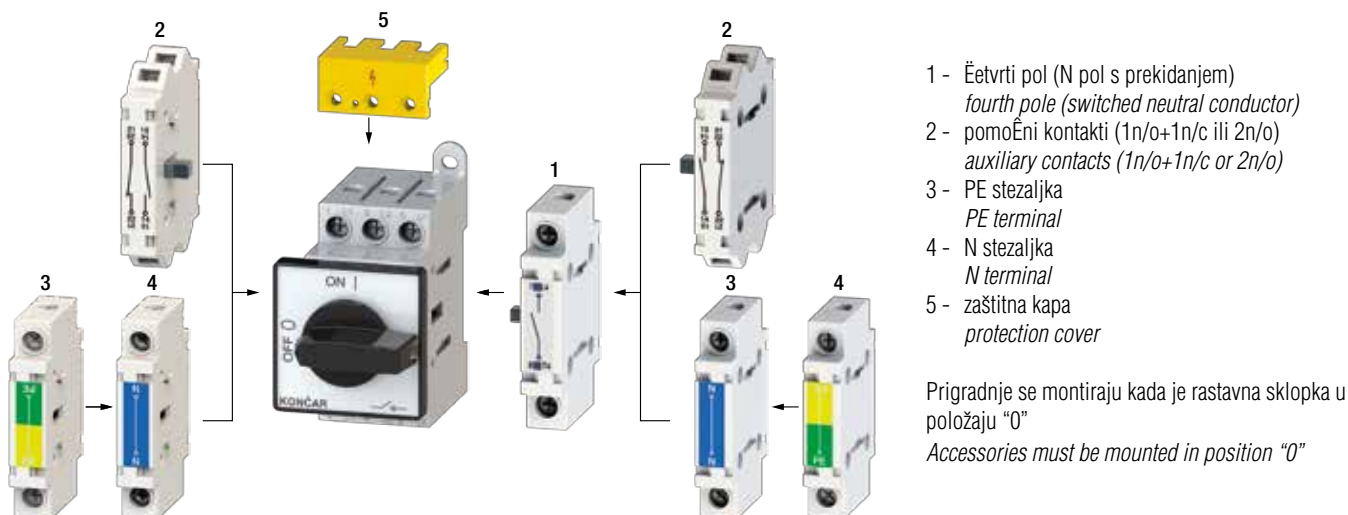
NAPOMENA: za specijalne izvedbe 06, 06D, 41/42, 41D, 48/48D, 56, 71/72, 76/77, 85 i 87 kombinacije boja su opisane u poglavlju POSEBNE IZVEDBE

REMARK: for optional extras 06, 06D, 41/42, 41D, 48/48D, 56, 71/72, 76/77, 85 and 87 combination of colours are described in the head OPTIONAL EXTRAS

STANDARDNI OBLICI UGRADNJE *STANDARD MOUNTING FORMS*

Oblik ugradnje <i>Mounting form</i>	Oznaka <i>Marking</i>	Zaštita <i>Protection</i>		Tip <i>Type</i>	Izgled <i>Outlook</i>
		Prednja <i>Front</i>	Stražnja <i>Rear</i>		
Ugradna sklopka <i>Front mounting</i>	U	IP 65	IP 20	CS16 CS16H CS25 CS25H CS32 CS32H CS40R CS40RH	
			IP 00	CS40 CS63 CS80 CS100 CS125 CS160 CS200	
Sklopka za odvojenu ugradnju <i>Rear mounting</i>	O	IP 65	IP 20	CS16 CS16H CS25 CS25H CS32 CS32H CS40R CS40RH	
			IP 00	CS40 CS63 CS80 CS100 CS125 CS160 CS200	
Sklopka u plastičnom kućištu <i>Switch in plastic casing</i>	P	IP65 IP65 IP65 IP65 IP65 IP65 IP65		CS16 CS16H CS25 CS25H CS32 CS32H CS40R CS40RH CS40 CS63 CS80 CS100 CS125 CS160 CS200	

PRIGRADNJE *ACCESSORIES*



NARUDŹBENI KODOVI PRIGRADNJI *ORDERING CODES FOR ACCESSORIES*

4. POL *4. POLE*



Tip sklopke <i>Switch type</i>	"U"	"0"
CS16	B71725	B71728
CS25	B71726	B71729
CS32	B71727	B71730
CS40R	B71761	B71762
CS40	B71745	B71748
CS63	B71746	B71749
CS80	B71747	B71750

raniji uklop - kasniji isklop
early make - late break



Tip sklopke <i>Switch type</i>	"U"	"0"
CS100	B72094	B72098
CS125	B72095	B72099
CS160	B72096	B72100
CS200	B72097	B72101

raniji uklop - kasniji isklop
early make - late break

PE STEZALJKA *PE TERMINAL*



Tip sklopke <i>Switch type</i>	"U"	"0"
CS16/CS25/CS32/CS40R	B71737	B71738
CS40/CS63/CS80	B71753	B71754



Tip sklopke <i>Switch type</i>	"U"	"0"
CS100/125/160	B72102	B72104
CS200	B72103	B72105

N STEZALJKA *N TERMINAL*



Tip sklopke <i>Switch type</i>	"U"	"0"
CS16/CS25/CS32/CS40R	B71735	B71736
CS40/CS63/CS80	B71751	B71752



Tip sklopke <i>Switch type</i>	"U"	"0"
CS100/125/160	B72106	B72108
CS200	B72107	B72109

NARUDŽBENI KODOVI PRIGRADNJI *ORDERING CODES FOR ACCESSORIES*

POMOĆNI KONTAKTI *AUXILIARY CONTACTS*

1n/o+1n/c

2n/o



Vrsta pom. kontakata <i>Type of aux. contacts</i>	"U"	"O"
1n/o+1n/c	B71731	B71732
2n/o	B71733	B71734

n/o kontakt: kasniji uklop - raniji isklop
n/o contact: late make - early break

ZAŠTITNA KAPA *PROTECTION COVER*



1P



3P

Broj polova <i>Number of poles</i>	"U" ili / or "O"		
	CS40 - CS80	CS100 - CS160	CS200
1P	B71755	B72110	B72473
3P	B71756	B72111	3x B72473

KUĆIŠTE *CASING*



Tip kućišta <i>Casing size</i>	Tip sklopke <i>Switch type</i>	Pg	M
110x110	CS16/25/32/40R	B71767	B71768
125x175	CS40/63/80	B71769	B71770
215x295	CS100/125/160/200	B72112	-

Plastično kućište se standardno isporučuje s priključcima za zemlju i nulu te standardnom ručicom.
Plastic casing is equipped with the earth and neutral terminals in addition to the standard handle.

MEHANIZAM *MECHANISM*

ZA 6/8 - POLNU RASTAVNU SKLOPKU
FOR 6/8 - POLE SWITCH DISCONNECTOR



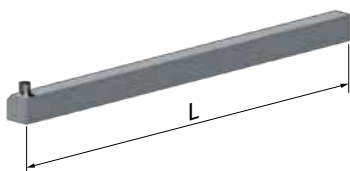
Tip sklopke <i>Switch type</i>	Narudžbeni broj <i>Ordering code</i>
CS16/25/32/40R CS40/63/80	B71766

ZA PREKLOPKU
FOR CHANGEOVER



Tip sklopke <i>Switch type</i>	Narudžbeni broj <i>Ordering code</i>
CS16/25/32/40R CS40/63/80	B71765

OSOVINA ZA POSEBNU IZVEDBU "102"
SHAFT FOR OPTIONAL EXTRA "102"



Tip sklopke <i>Switch type</i>	L [mm]	Narudžbeni broj <i>Ordering code</i>
CS16/25/32/40R/40/63/80	100	B71840
	200	B71841
CS100/125/160/200	100	B72516
	200	B72517

MODUL ZA POSEBNU IZVEDBU "108D"
MODUL FOR OPTIONAL EXTRA "108D"



Tip sklopke <i>Switch type</i>	Narudžbeni broj <i>Ordering code</i>
CS16/25/32/40R/40/63/80	B71717

POSEBNE IZVEDBE *OPTIONAL EXTRAS*

KOD *CODE*

RASTAVNE SKLOPKE SA ZAKLJUČAVANJEM LOKOTOM
SWITCH DISCONNECTORS WITH PADLOCK



56

Standardno zaključavanje u "0". Moguća zaključavanja s 1-3 lokota.

In standard manner locking is in "0". It is possible to use 1-3 padlocks.

RUČICA HANDLE	ČEONA PLOČA COVER PLATE	PREDNJA PLOČA FRONT PLATE	Y KOD / CODE
crna / black	crna / black	crna / black	
siva / grey	siva / grey	siva / grey	20
crvena / red	žuta / yellow	žuta / yellow	40

CS16	U	56
CS25	U	56
CS32	U	56
CS40R	U	56

CS16	O	56
CS25	O	56
CS32	O	56
CS40R	O	56



06

Standardno zaključavanje u "0"

In standard manner locking is in "0"

RUČICA HANDLE	ČEONA PLOČA COVER PLATE	PREDNJA PLOČA FRONT PLATE	Y KOD / CODE
crna / black	crna / black	crna / black	
siva / grey	siva / grey	siva / grey	20
crvena / red	žuta / yellow	žuta / yellow	40

CS16	U	06
CS16H	U	06
CS25	U	06
CS25H	U	06
CS32	U	06
CS32H	U	06
CS40R	U	06
CS40RH	U	06
CS40	U	06
CS63	U	06
CS80	U	06
CS100	U	06
CS125	U	06
CS160	U	06
CS200	U	06

CS16	O	06
CS16H	O	06
CS25	O	06
CS25H	O	06
CS32	O	06
CS32H	O	06
CS40R	O	06
CS40RH	O	06
CS40	O	06
CS63	O	06
CS80	O	06
CS100	O	06
CS125	O	06
CS160	O	06
CS200	O	06



06D

Standardno zaključavanje u "0". Moguća zaključavanja s 1-4 lokota.

IP40

In standard manner locking is in "0". It is possible to use 1-4 padlocks.

RUČICA HANDLE	PREDNJA PLOČA FRONT PLATE	PODLOGA ESCUTCH. PLATE	Y KOD / CODE
crna / black	crna / black	siva / grey	
siva / grey	siva / grey	siva / grey	20
crvena - žuta / red - yellow	žuta / yellow	žuta / yellow	40

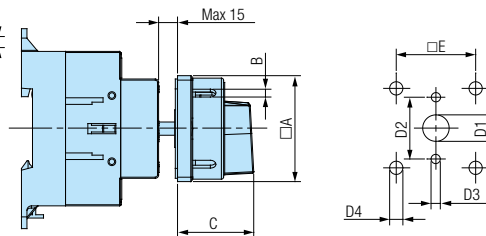
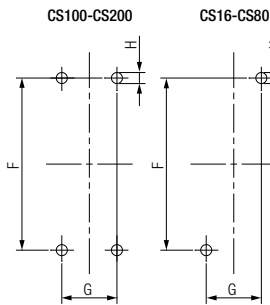
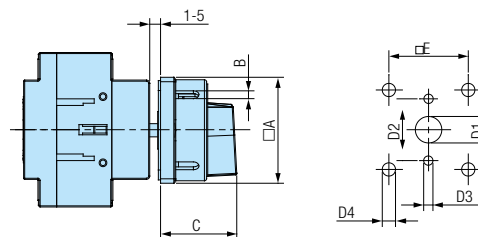
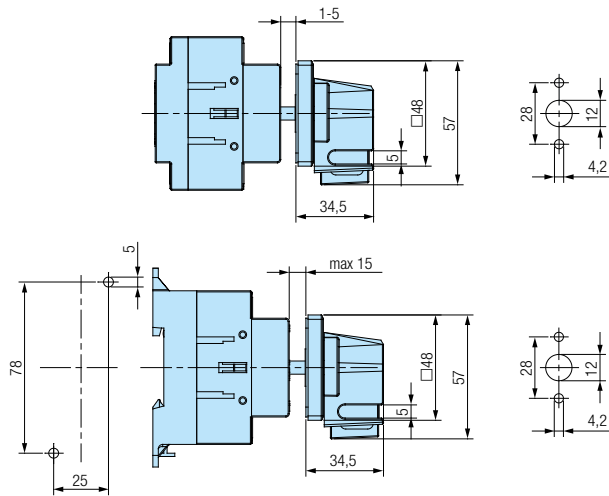
CS100	U	06D
CS125	U	06D
CS160	U	06D
CS200	U	06D

CS100	O	06D
CS125	O	06D
CS160	O	06D
CS200	O	06D

MJERNE SKICE *DIMENSIONAL DRAWINGS* (mm)

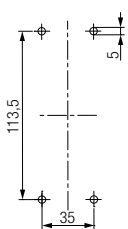
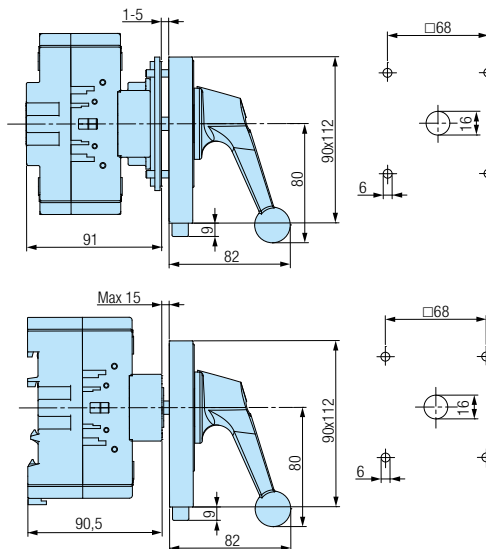
Plan bušenja / *Drilling plan*
Stražnji lim / *Rear plate*

Plan bušenja / *Drilling plan*
Prednji lim / *Front plate*



Tip sklopke <i>Switch type</i>	A	B	C	D1	D2	D3	D4	E
CS16	48	5	34,2	12	28	4,2	-	-
CS16H	65	6	38	12	28	4,2	-	-
CS25	48	5	34,2	12	28	4,2	-	-
CS25H	65	6	38	12	28	4,2	-	-
CS32	48	5	34,2	12	28	4,2	-	-
CS32H	65	6	38	12	28	4,2	-	-
CS40R	48	5	34,2	12	28	4,2	-	-
CS40RH	65	6	38	12	28	4,2	-	-
CS40	65	6	38	12	28	4,2	-	-
CS63	65	6	38	12	28	4,2	-	-
CS80	65	6	38	12	28	4,2	-	-
CS100	90	7	49	16	-	-	6	68
CS125	90	7	49	16	-	-	6	68
CS160	90	7	49	16	-	-	6	68
CS200	90	7	49	16	-	-	6	68

Tip sklopke <i>Switch type</i>	A	B	C	D1	D2	D3	D4	E	F	G	H
CS16	48	5	34,2	12	28	4,2	-	-	78	25	5
CS16H	65	6	38	12	28	4,2	-	-	78	25	5
CS25	48	5	34,2	12	28	4,2	-	-	78	25	5
CS25H	65	6	38	12	28	4,2	-	-	78	25	5
CS32	48	5	34,2	12	28	4,2	-	-	78	25	5
CS32H	65	6	38	12	28	4,2	-	-	78	25	5
CS40R	48	5	34,2	12	28	4,2	-	-	78	25	5
CS40RH	65	6	38	12	28	4,2	-	-	78	25	5
CS40	65	6	38	12	28	4,2	-	-	88	40	6
CS63	65	6	38	12	28	4,2	-	-	88	40	6
CS80	65	6	38	12	28	4,2	-	-	88	40	6
CS100	90	7	49	16	-	-	6	68	113,5	35	5
CS125	90	7	49	16	-	-	6	68	113,5	35	5
CS160	90	7	49	16	-	-	6	68	113,5	35	5
CS200	90	7	49	16	-	-	6	68	113,5	35	5



POSEBNE IZVEDBE *OPTIONAL EXTRAS*

KOD *CODE*

GLAVNA SKLOPKA
MAIN SWITCH

GLAVNA SKLOPKA UJEDNO I SKLOPKA ZA NUŽNO ISKLAPANJE
MAIN SWITCH WITH EMERGENCY



23
25

Zaključavanje samo u "0".
Zaštita od slučajnog dodira dovodnih priključnih stezaljki pod naponom.

*Locking only in "0".
Protection against an accidental contact with the supplying terminals under voltage.*



73
75

Zaključavanje (1-3 lokota) samo u "0".
Zaštita od slučajnog dodira dovodnih priključnih stezaljki pod naponom.

*Locking (1-3) only in "0".
Protection against an accidental contact with the supplying terminals under voltage.*



63D
65D

Standardno zaključavanje u "0".
Zaštita od slučajnog dodira dovodnih priključnih stezaljki pod naponom.

IP40

*In standard manner locking is in "0".
Protection against an accidental contact with the supplying terminals under voltage.*

<i>ili / or</i>			
CS16	U	23 25
CS16H	U	23 25
CS25	U	23 25
CS25H	U	23 25
CS32	U	23 25
CS32H	U	23 25
CS40R	U	23 25
CS40RH	U	23 25
CS40	U	23 25
CS63	U	23 25
CS80	U	23 25
CS100	U	23 25
CS125	U	23 25
CS160	U	23 25
CS200	U	23 25

<i>ili / or</i>			
CS16	O	23 25
CS16H	O	23 25
CS25	O	23 25
CS25H	O	23 25
CS32	O	23 25
CS32H	O	23 25
CS40R	O	23 25
CS40RH	O	23 25
CS40	O	23 25
CS63	O	23 25
CS80	O	23 25
CS100	O	23 25
CS125	O	23 25
CS160	O	23 25
CS200	O	23 25

<i>ili / or</i>			
CS16	U	73 75
CS25	U	73 75
CS32	U	73 75
CS40R	U	73 75

<i>ili / or</i>			
CS16	O	73 75
CS25	O	73 75
CS32	O	73 75
CS40R	O	73 75

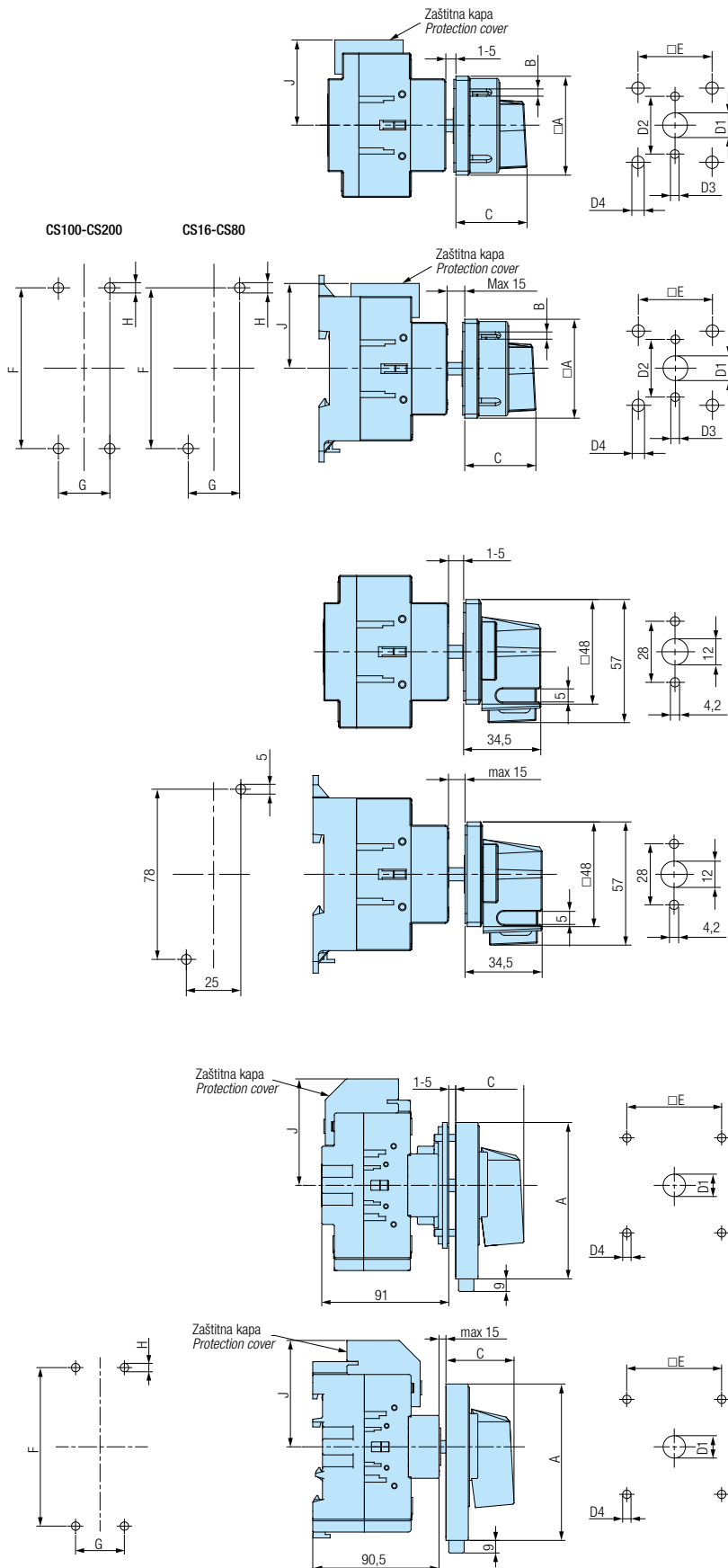
<i>ili / or</i>			
CS100	U	63D 65D
CS125	U	63D 65D
CS160	U	63D 65D
CS200	U	63D 65D

<i>ili / or</i>			
CS100	O	63D 65D
CS125	O	63D 65D
CS160	O	63D 65D
CS200	O	63D 65D

MJERNE SKICE *DIMENSIONAL DRAWINGS* (mm)

Plan bušenja / *Drilling plan*
Stražnji lim / *Rear plate*

Plan bušenja / *Drilling plan*
Prednji lim / *Front plate*



Tip sklopke Switch type	□A	B	C	D1	D2	D3	D4	□E	J
CS16	48	5	34,2	12	28	4,2	-	-	-
CS16H	65	6	38	12	28	4,2	-	-	-
CS25	48	5	34,2	12	28	4,2	-	-	-
CS25H	65	6	38	12	28	4,2	-	-	-
CS32	48	5	34,2	12	28	4,2	-	-	-
CS32H	65	6	38	12	28	4,2	-	-	-
CS40R	48	5	34,2	12	28	4,2	-	-	-
CS40RH	65	6	38	12	28	4,2	-	-	-
CS40	65	6	38	12	28	4,2	-	-	50
CS63	65	6	38	12	28	4,2	-	-	50
CS80	65	6	38	12	28	4,2	-	-	50
CS100	90	7	49	16	-	-	6	68	76
CS125	90	7	49	16	-	-	6	68	76
CS160	90	7	49	16	-	-	6	68	76
CS200	90	7	49	16	-	-	6	68	76

Tip sklopke Switch type	□A	B	C	D1	D2	D3	D4	□E	F	G	H	J
CS16	48	5	34,2	12	28	4,2	-	-	78	25	5	-
CS16H	65	6	38	12	28	4,2	-	-	78	25	5	-
CS25	48	5	34,2	12	28	4,2	-	-	78	25	5	-
CS25H	65	6	38	12	28	4,2	-	-	78	25	5	-
CS32	48	5	34,2	12	28	4,2	-	-	78	25	5	-
CS32H	65	6	38	12	28	4,2	-	-	78	25	5	-
CS40R	48	5	34,2	12	28	4,2	-	-	78	25	5	-
CS40RH	65	6	38	12	28	4,2	-	-	78	25	5	-
CS40	65	6	38	12	28	4,2	-	-	88	40	6	50
CS63	65	6	38	12	28	4,2	-	-	88	40	6	50
CS80	65	6	38	12	28	4,2	-	-	88	40	6	50
CS100	90	7	49	16	-	-	6	68	113,5	35	5	76
CS125	90	7	49	16	-	-	6	68	113,5	35	5	76
CS160	90	7	49	16	-	-	6	68	113,5	35	5	76
CS200	90	7	49	16	-	-	6	68	113,5	35	5	150

Tip sklopke Switch type	A	B	C	D1	D4	□E	J
CS100	90x112	5	48	16	6	68	76
CS125	90x112	5	48	16	6	68	76
CS160	90x112	5	48	16	6	68	76
CS200	90x112	5	48	16	6	68	150

Tip sklopke Switch type	A	B	C	D1	D4	□E	F	G	H	J
CS100	90x112	5	48	16	6	68	113,5	35	5	76
CS125	90x112	5	48	16	6	68	113,5	35	5	76
CS160	90x112	5	48	16	6	68	113,5	35	5	76
CS200	90x112	5	48	16	6	68	113,5	35	5	150

POSEBNE IZVEDBE *OPTIONAL EXTRAS*

KOD *CODE*

CENTRALNA UGRADNJA
CENTRAL MOUNTING



29D

Ugradnja u Ø22mm.
Utična montaža rastavne sklopke i prednjeg sklopa.

Mounting into Ø22mm.
Snap-on mounting of switch-disconnector with front part

CS16	U	29D
CS25	U	29D
CS32	U	29D
CS40R	U	29D



29K

Ugradnja u Ø22mm.
Utična montaža rastavne sklopke i prednjeg sklopa.

Mounting into Ø22mm.
Snap-on mounting of switch-disconnector with front part

CS16	U	29K
CS25	U	29K
CS32	U	29K
CS40R	U	29K



47

Ugradnja u Ø22mm.
Utična montaža rastavne sklopke i prednjeg sklopa.

Mounting into Ø22mm.
Snap-on mounting of switch-disconnector with front part

CS16	U	47
CS25	U	47
CS32	U	47
CS40R	U	47



41D

Ugradnja u Ø22mm.
Utična montaža rastavne sklopke i prednjeg sklopa.
Zaključavanje (1-3 lokota) u "0".

Mounting into Ø22mm.
Snap-on mounting of switch-disconnector with front part.
Padlocking (1-3) in "0".

CS16	U	41D
CS25	U	41D
CS32	U	41D
CS40R	U	41D

RUČICA HANDLE	PREDNJA PLOČA FRONT PLATE	PODLOGA ESCUTCH. PLATE	Y KOD / CODE
crna / black	crna / black	siva / grey	
siva / grey	siva / grey	siva / grey	20
crvena - žuta / red - yellow	žuta / yellow	žuta / yellow	40



41K

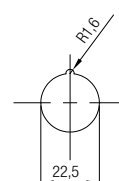
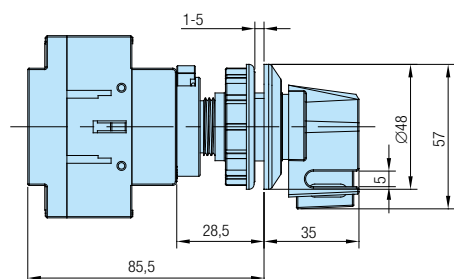
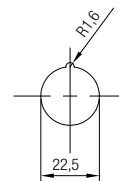
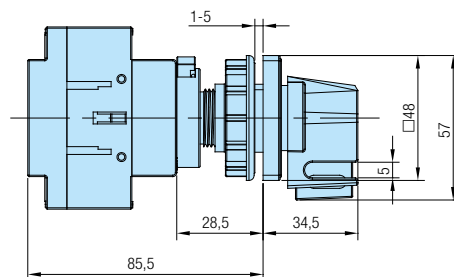
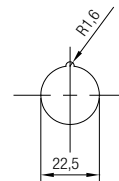
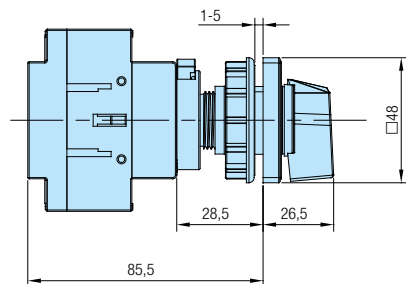
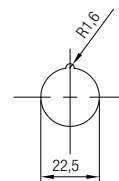
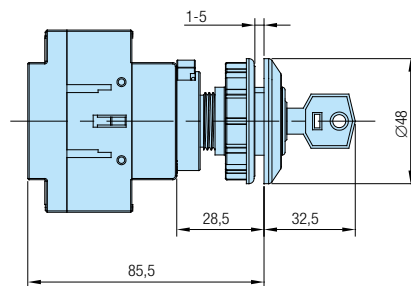
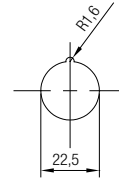
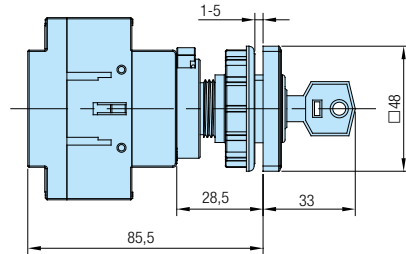
Ugradnja u Ø22mm.
Utična montaža rastavne sklopke i prednjeg sklopa.
Zaključavanje (1-3 lokota) u "0".

Mounting into Ø22mm.
Snap-on mounting of switch-disconnector with front part.
Padlocking (1-3) in "0".

CS16	U	41K
CS25	U	41K
CS32	U	41K
CS40R	U	41K

MJERNE SKICE *DIMENSIONAL DRAWINGS* (mm)

Plan bušenja / *Drilling plan*
Prednji lim / *Front plate*



POSEBNE IZVEDBE *OPTIONAL EXTRAS*

KOD *CODE*

CENTRALNA UGRADNJA
CENTRAL MOUNTING



67

Ugradnja u $\varnothing 22\text{mm}$.
Utična montaža rastavne sklopke i prednjeg sklopa.

*Mounting into $\varnothing 22\text{mm}$.
Snap-on mounting of switch-disconnector with front part.*

CS16	U	67
CS25	U	67
CS32	U	67
CS40R	U	67

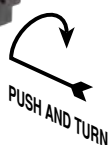


71
72

Ugradnja u $\varnothing 22\text{mm}$ (izvedba 71) odnosno $\varnothing 30\text{mm}$ (izvedba 72).
Zaključavanje (1-3 lokota) u položaju "0".

IP40

*Mounting into $\varnothing 22\text{mm}$ (optional extra 71) or $\varnothing 30\text{mm}$ (optional extra 72).
Padlocking (1-3) in "0".*



RUČICA HANDLE	PREDNJA PLOČA FRONT PLATE	PODLOGA ESCUTCH. PLATE	Y KOD / CODE
crna / black	crna / black	siva / grey	
siva / grey	siva / grey	siva / grey	20
crvena - žuta / red - yellow	žuta / yellow	žuta / yellow	40

CS16	U	71	72
CS25	U	71	72
CS32	U	71	72
CS40R	U	71	72

ili / or



11
09

Ugradnja u $\varnothing 22\text{mm}$ (izvedba 11) odnosno $\varnothing 30\text{mm}$ (izvedba 09).

IP40

Mounting into $\varnothing 22\text{mm}$ (optional extra 11) or $\varnothing 30\text{mm}$ (optional extra 09).

CS100	U	11	09
CS125	U	11	09
CS160	U	11	09
CS200	U	11	09

ili / or



12
10

Ugradnja u $\varnothing 22\text{mm}$ (izvedba 12) odnosno $\varnothing 30\text{mm}$ (izvedba 10).
Standardno zaključavanje odnosno vađenje ključa u položaju "0".
Na zahtjev moguća 1-2 zaključana položaja (vađenje ključa) (potrebno definirati).

IP40

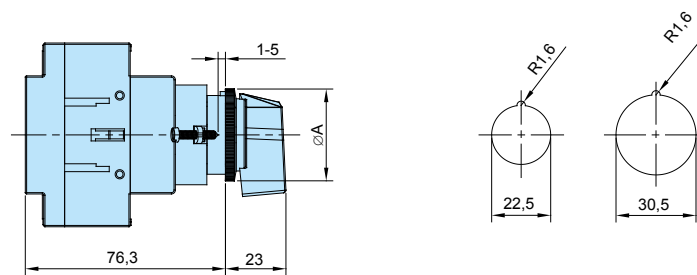
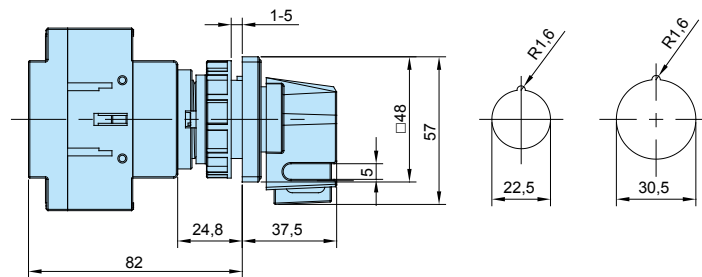
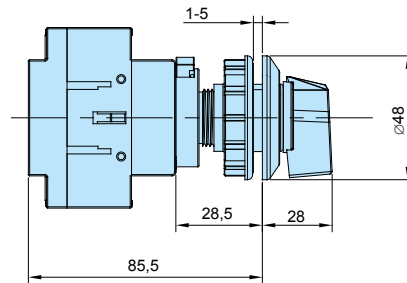
*3 Mounting into $\varnothing 22\text{mm}$ (optional extra 12) or $\varnothing 30\text{mm}$ (optional extra 10).
Locking and pull-out of the key at 90°. Possible 1-2 locked positions (please define).*

CS100	U	12	10
CS125	U	12	10
CS160	U	12	10
CS200	U	12	10

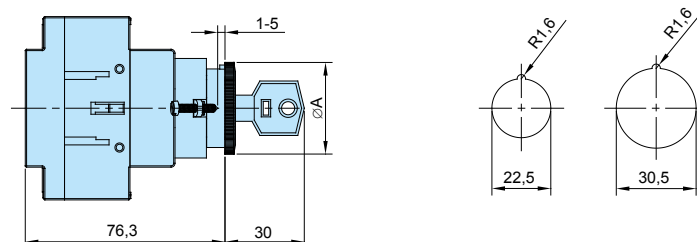
ili / or

MJERNE SKICE *DIMENSIONAL DRAWINGS* (mm)

Plan bušenja / *Drilling plan*
Prednji lim / *Front plate*



Tip sklopke Switch type	ØA	
	11	09
CS16	28	35
CS25	28	35
CS32	28	35
CS40R	28	35

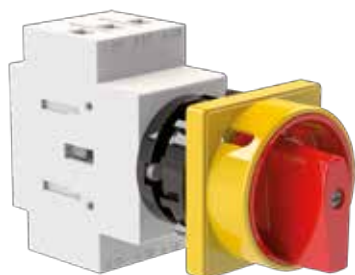


Tip sklopke Switch type	ØA	
	12	10
CS16	28	35
CS25	28	35
CS32	28	35
CS40R	28	35

POSEBNE IZVEDBE *OPTIONAL EXTRAS*

KOD *CODE*

CENTRALNA UGRADNJA *CENTRAL MOUNTING*



76
77

Ugradnja u Ø22mm (izvedba 71) odnosno Ø30mm (izvedba 72).
Zaključavanje (1-3 lokota) u položaju "0".

*Mounting into Ø22mm (optional extra 71) or Ø30mm (optional extra 72).
Padlocking (1-3) in "0".*

RUČICA HANDLE	ČEONA PLOČA COVER PLATE	PREDNJA PLOČA FRONT PLATE	Y KOD / CODE
crna / black	crna / black	crna / black	
siva / grey	siva / grey	siva / grey	20
crvena / red	žuta / yellow	žuta / yellow	40

		ili / or	
CS16	U	76 77
CS25	U	76 77
CS32	U	76 77
CS40R	U	76 77

ZAŠTITNA KAPA *PROTECTION COVER*



69

Zaštita od slučajnog dodira dovodnih priključnih stezaljki pod naponom.
Standardno - zaštita dovodnih priključnih stezaljki (gornja strana).

*Protection against an accidental contact with the supplying terminals under voltage.
Standard manner supplying terminals are protected (top side).*

CS40	U	69
CS63	U	69
CS80	U	69
CS100	U	69
CS125	U	69
CS160	U	69
CS200	U	69

CS40	O	69
CS63	O	69
CS80	O	69
CS100	O	69
CS125	O	69
CS160	O	69
CS200	O	69

INSTALACIONA KAPA *SERVICE COVER*



48D

Montaža na šinu 35 EN 50022 s instalacionom kapom
za ugradnju u standardni otvor 45mm.

*Snap on base mounting for the rail 35 EN 50022
for 45mm standard knock-out.*

RUČICA HANDLE	Y KOD / CODE
crna / black	
crvena / red	40

CS16	O	48D
CS25	O	48D
CS32	O	48D
CS40R	O	48D
CS40	O	48D
CS63	O	48D
CS80	O	48D
CS100	O	48D
CS125	O	48D
CS160	O	48D
CS200	O	48D



48D, 56

Standardno zaključavanje u "0". Moguća zaključavanja s 1-3 lokota.

In standard manner locking is in "0". It is possible to use 1-3 padlocks

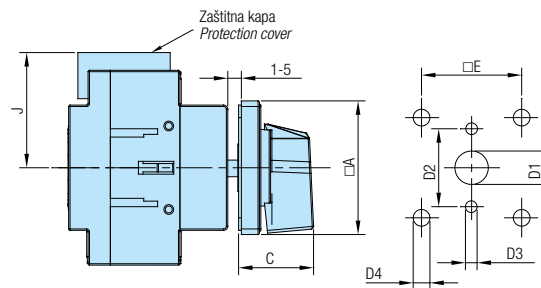
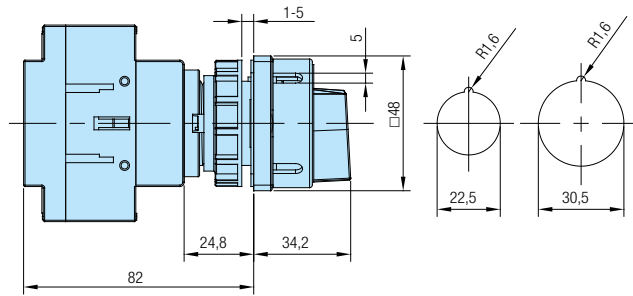
RUČICA HANDLE	Y KOD / CODE
crna / black	
siva / grey	20
crvena - žuta red - yellow	40

CS16	O	48D, 56
CS25	O	48D, 56
CS32	O	48D, 56
CS40R	O	48D, 56

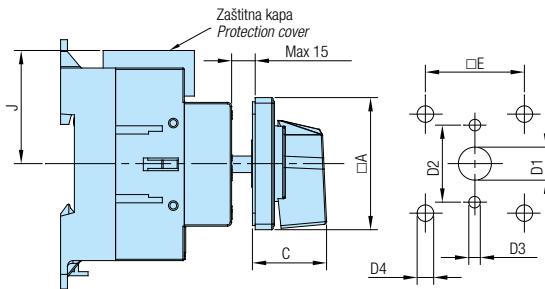
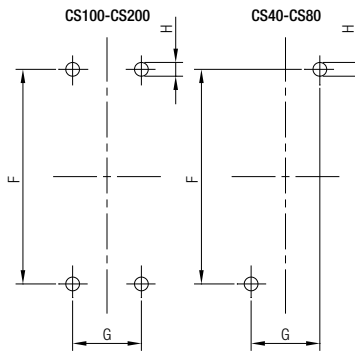
MJERNE SKICE *DIMENSIONAL DRAWINGS* (mm)

Plan bušenja / *Drilling plan*
Stražnji lim / *Rear plate*

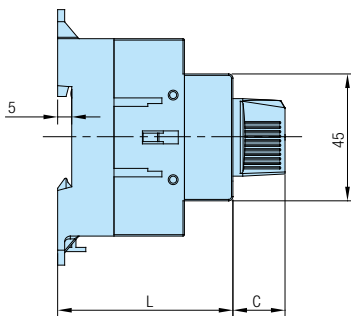
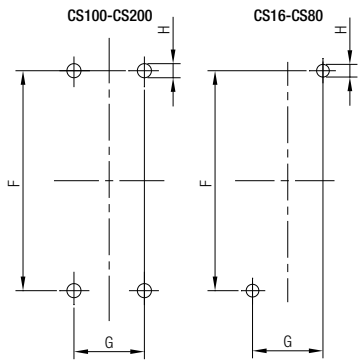
Plan bušenja / *Drilling plan*
Prednji lim / *Front plate*



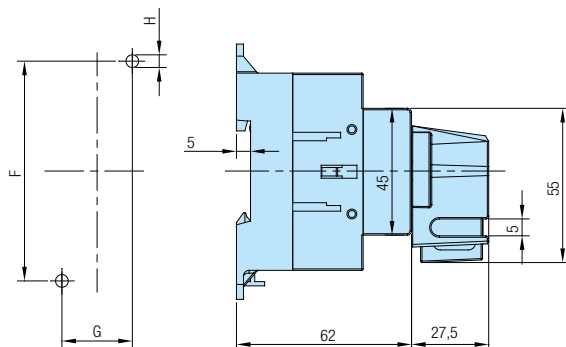
Tip sklopke Switch type	A	C	D1	D2	D3	D4	E	J
CS40	65	38	12	28	4,2	-	-	50
CS63	65	38	12	28	4,2	-	-	50
CS80	65	38	12	28	4,2	-	-	50
CS100	90	49	16	-	-	6	68	76
CS125	90	49	16	-	-	6	68	76
CS160	90	49	16	-	-	6	68	76
CS200	90	49	16	-	-	6	68	150



Tip sklopke Switch type	A	C	D1	D2	D3	D4	E	F	G	H	J
CS40	65	38	12	28	4,2	-	-	88	40	6	50
CS63	65	38	12	28	4,2	-	-	88	40	6	50
CS80	65	38	12	28	4,2	-	-	88	40	6	50
CS100	90	49	16	-	-	6	68	113,5	35	5	76
CS125	90	49	16	-	-	6	68	113,5	35	5	76
CS160	90	49	16	-	-	6	68	113,5	35	5	76
CS200	90	49	16	-	-	6	68	113,5	35	5	150



Tip sklopke Switch type	A	C	G	H	L
CS16	18,5	78	25	5	62
CS25	18,5	78	25	5	62
CS32	18,5	78	25	5	62
CS40R	18,5	78	25	5	62
CS40	18,5	88	40	6	62
CS63	18,5	88	40	6	62
CS80	18,5	88	40	6	62
CS100	14	113,5	35	5	90,5
CS125	14	113,5	35	5	90,5
CS160	14	113,5	35	5	90,5
CS200	14	113,5	35	5	90,5



Tip sklopke Switch type	F	G	H
CS16	78	25	5
CS25	78	25	5
CS32	78	25	5
CS40R	78	25	5
CS40	88	40	6
CS63	88	40	6
CS80	88	40	6

POSEBNE IZVEDBE *OPTIONAL EXTRAS*

KOD *CODE*

PRODUŽENJE OSOVINE I SPOJKA ZA VRATA *EXTENSION SHAFT AND DOOR COUPLING*



108D

Upotreba kod rastavnih sklopki odvojene ugradnje, omogućava prilagodbu različitih dubina ugradnje. Otvaranje vrata u položaju "0". Standardno se isporučuje s jednim modulom.

Used to adapt switches with base mounting to different mounting depths. Door opening in position "0". Standard version with one module.

KOD / CODE	IZVEDBA / VERSION
108D	Standardna izvedba s jednim modulom <i>Standard version with one module</i>
108D - 2	Izvedba s dva modula <i>Version with two modules</i>
108D - 3	Izvedba s tri modula <i>Version with three modules</i>
108D - 4	Izvedba s četiri modula <i>Version with four modules</i>

CS16	O	108D
CS16H	O	108D
CS25	O	108D
CS25H	O	108D
CS32	O	108D
CS32H	O	108D
CS40R	O	108D
CS40RH	O	108D
CS40	O	108D
CS63	O	108D
CS80	O	108D



102

Otvaranje vrata u položaju "0". Standardno se isporučuje s osovinom dužine 100mm.

Door opening in position "0". Standard version with 100mm shaft.

KOD / CODE	IZVEDBA / VERSION
102	Standardna izvedba - osovina 100 mm <i>Standard version - shaft 100 mm</i>
102 - 200	Osovina 200 mm <i>Shaft 200 mm</i>

CS16	O	102
CS16H	O	102
CS25	O	102
CS25H	O	102
CS32	O	102
CS32H	O	102
CS40R	O	102
CS40RH	O	102
CS40	O	102
CS63	O	102
CS80	O	102
CS100	O	102
CS125	O	102
CS160	O	102
CS200	O	102

SPOJKA ZA VRATA *DOOR COUPLING*



57D 58D

Otvaranje vrata u bilo kojem položaju (izvedba 57D) ili samo u "0" (izvedba 58D). Minimalna udaljenost od šarke 150mm.

Door-opening in any position (57D) or only in "0" (58D). Minimal distance to the door-hinge 150mm.

			ili / or
CS16	O	57D 58D
CS16H	O	57D 58D
CS25	O	57D 58D
CS25H	O	57D 58D
CS32	O	57D 58D
CS32H	O	57D 58D
CS40R	O	57D 58D
CS40RH	O	57D 58D
CS40	O	57D 58D
CS63	O	57D 58D
CS80	O	57D 58D



07 08

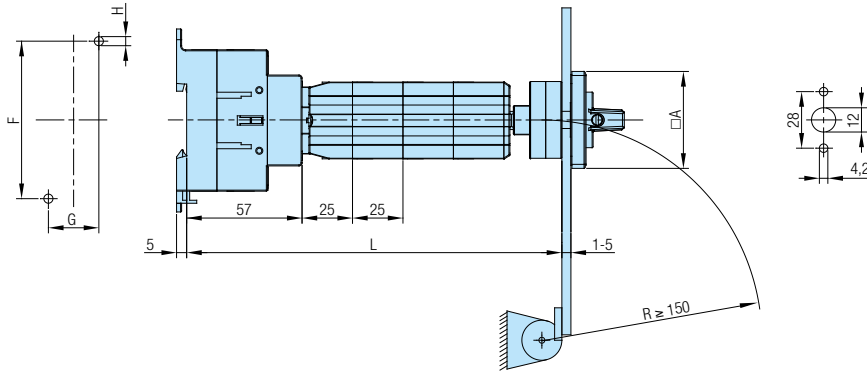
Otvaranje vrata u bilo kojem položaju (izvedba 07) ili samo u "0" (izvedba 08). Minimalna udaljenost od šarke 150mm. Ukoliko je traženi "S" veći od ponudjenog, potrebno je definirati "S" ili dubinu ormara (L+S).

Door-opening in any position (07) or only in "0" (08). Minimal distance to the door-hinge 150mm. When required "S" is bigger than offered, it is necessary to define "S" or depth of the board (L+S).

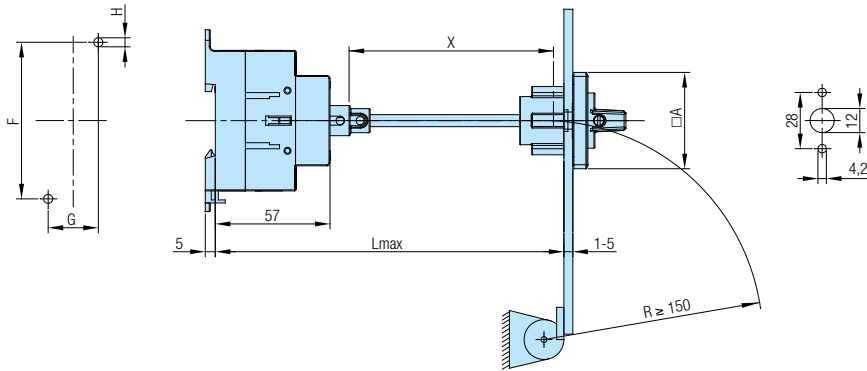
			ili / or
CS100	O	07 08
CS125	O	07 08
CS160	O	07 08
CS200	O	07 08

MJERNE SKICE *DIMENSIONAL DRAWINGS* (mm)

Plan bušenja / *Drilling plan*
Stražnji lim / *Rear plate*



Plan bušenja / *Drilling plan*
Prednji lim / *Front plate*

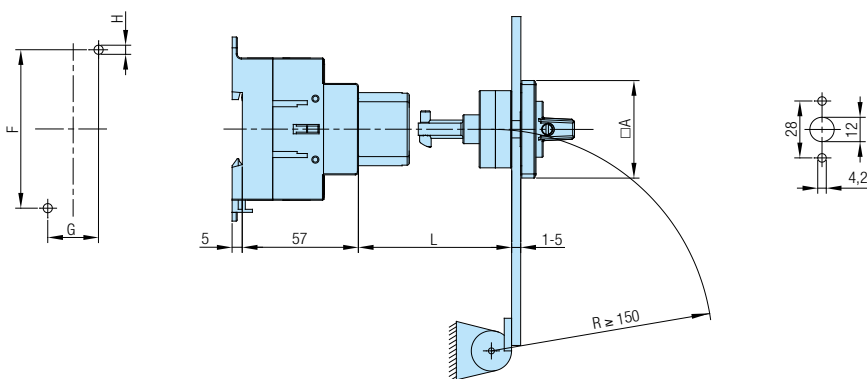


Tip sklopke Switch type	□A	F	G	H
CS16	48	78	25	5
CS16H	65	78	25	5
CS25	48	78	25	5
CS25H	65	78	25	5
CS32	48	78	25	5
CS32H	65	78	25	5
CS40R	48	78	25	5
CS40RH	65	78	25	5
CS40	65	88	40	6
CS63	65	88	40	6
CS80	65	88	40	6

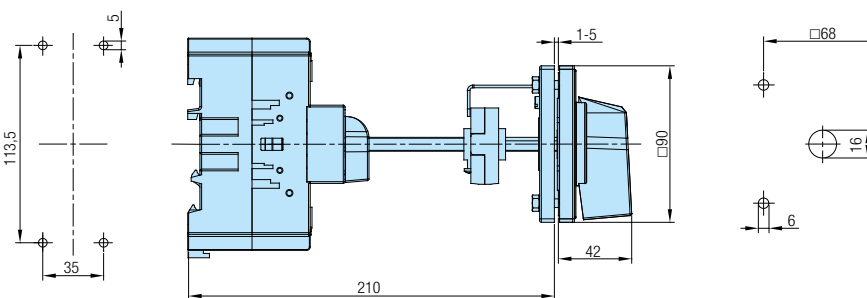
Kod Codes	Broj modula No. of moduls	L min max	
108D	1	110	120
108D-2	2	135	145
108D-3	3	160	170
108D-4	4	185	195

Tip sklopke Switch type	□A	F	G	H
CS16	48	78	25	5
CS16H	65	78	25	5
CS25	48	78	25	5
CS25H	65	78	25	5
CS32	48	78	25	5
CS32H	65	78	25	5
CS40R	48	78	25	5
CS40RH	65	78	25	5
CS40	65	88	40	6
CS63	65	88	40	6
CS80	65	88	40	6
CS100	90	113.5	35	5
CS125	90	113.5	35	5
CS160	90	113.5	35	5
CS200	90	113.5	35	5

Kod Codes	X	L _{max}	
		CS16-80	CS100-200
102	100	175	155
102-200	200	275	255



Tip sklopke Switch type	□A	F	G	H	L
CS16	48	78	25	5	45-55
CS16H	65	78	25	5	45-55
CS25	48	78	25	5	45-55
CS25H	65	78	25	5	45-55
CS32	48	78	25	5	45-55
CS32H	65	78	25	5	45-55
CS40R	48	78	25	5	45-55
CS40RH	65	78	25	5	45-55
CS40	65	88	40	6	45-55
CS63	65	88	40	6	45-55
CS80	65	88	40	6	45-55



POSEBNE IZVEDBE *OPTIONAL EXTRAS*

KOD *CODE*

PRODUŽENJE OSOVINE *EXTENSION SHAFT*



02

Standardna izvedba podrazumijeva da je L=250mm (300mm za veličinu A2).
Drugačiju dubinu ormara potrebno je definirati narudžbom.

*Standard version includes the L=250mm (300mm for size A2).
For special version it is necessary to define board depth*

CS16	O	02
CS16H	O	02
CS25	O	02
CS25H	O	02
CS32	O	02
CS32H	O	02
CS40R	O	02
CS40RH	O	02
CS40	O	02
CS63	O	02
CS80	O	02
CS100	O	02
CS125	O	02
CS160	O	02
CS200	O	02

SIGNALNE SVJETILJKE *SIGNAL LAMPS*



15

Standardno se ugrađuje crvena svjetiljka (230V) desno dolje.
Mogući su i naponi 110 i 400V kao i zelena boja svjetiljke (potrebno definirati).
Na zahtjev ugrađujemo i drugu svjetiljku lijevo dolje

*In a standard manner, red lamp (230V) is built in the right bottom corner.
Possible voltages are 110 and 400V and green lamp, too (please define).
On request second lamp can be built in the left bottom corner.*

IP40

CS16H	U	15
CS25H	U	15
CS32H	U	15
CS40RH	U	15

CS16H	O	15
CS25H	O	15
CS32H	O	15
CS40RH	O	15

SKLOPKA ZA NUŽNO ISKLAPANJE *EMERGENCY OFF SWITCH*



24

Standardna rastavna sklopka sa žutom prednjom pločom,
žutom podlogom i crvenom ručicom.

*Standard switch-disconnector with yellow front plate,
yellow escutcheon plate and red handle.*

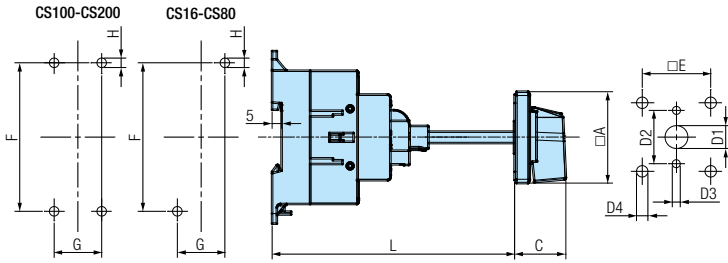
CS16	U	24
CS16H	U	24
CS25	U	24
CS25H	U	24
CS32	U	24
CS32H	U	24
CS40R	U	24
CS40RH	U	24
CS40	U	24
CS63	U	24
CS80	U	24
CS100	U	24
CS125	U	24
CS160	U	24
CS200	U	24

CS16	O	24
CS16H	O	24
CS25	O	24
CS25H	O	24
CS32	O	24
CS32H	O	24
CS40R	O	24
CS40RH	O	24
CS40	O	24
CS63	O	24
CS80	O	24
CS100	O	24
CS125	O	24
CS160	O	24
CS200	O	24

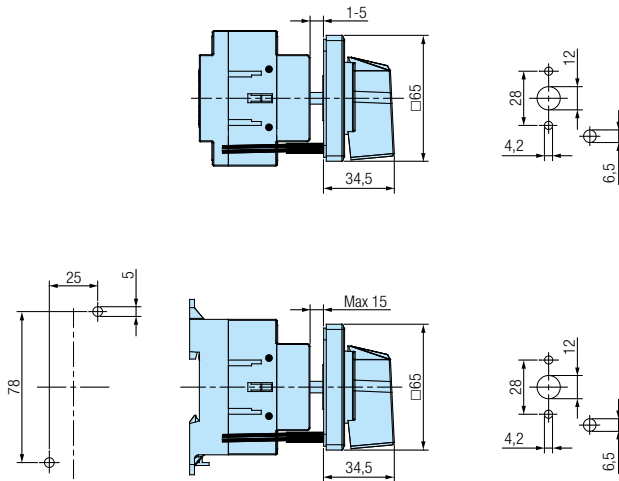
MJERNE SKICE *DIMENSIONAL DRAWINGS* (mm)

Plan bušenja / *Drilling plan*
Stražnji lim / *Rear plate*

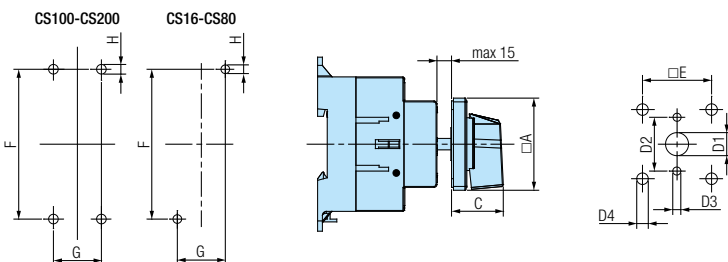
Plan bušenja / *Drilling plan*
Prednji lim / *Front plate*



Tip sklopke <i>Switch type</i>	□A	C	D1	D2	D3	D4	□E	F	G	H	L _{max}
CS16	48	26,5	12	28	4,2	-	-	78	25	5	250
CS16H	65	34,5	12	28	4,2	-	-	78	25	5	250
CS25	48	26,5	12	28	4,2	-	-	78	25	5	250
CS25H	65	34,5	12	28	4,2	-	-	78	25	5	250
CS32	48	26,5	12	28	4,2	-	-	78	25	5	250
CS32H	65	34,5	12	28	4,2	-	-	78	25	5	250
CS40R	48	26,5	12	28	4,2	-	-	78	25	5	250
CS40RH	65	34,5	12	28	4,2	-	-	78	25	5	250
CS40	65	34,5	12	28	4,2	-	-	88	40	6	250
CS63	65	34,5	12	28	4,2	-	-	88	40	6	250
CS80	65	34,5	12	28	4,2	-	-	88	40	6	250
CS100	90	41,5	16	-	-	6	68	113,5	35	5	300
CS125	90	41,5	16	-	-	6	68	113,5	35	5	300
CS160	90	41,5	16	-	-	6	68	113,5	35	5	300
CS200	90	41,5	16	-	-	6	68	113,5	35	5	300



Tip sklopke <i>Switch type</i>	□A	C	D1	D2	D3	D4	D5	□E
CS16	48	34,2	12	28	4,2	-	6,5	-
CS16H	65	38	12	28	4,2	-	6,5	-
CS25	48	34,2	12	28	4,2	-	6,5	-
CS25H	65	38	12	28	4,2	-	6,5	-
CS32	48	34,2	12	28	4,2	-	6,5	-
CS32H	65	38	12	28	4,2	-	6,5	-
CS40R	48	34,2	12	28	4,2	-	6,5	-
CS40RH	65	38	12	28	4,2	-	6,5	-
CS40	65	38	12	28	4,2	-	6,5	-
CS63	65	38	12	28	4,2	-	6,5	-
CS80	65	38	12	28	4,2	-	6,5	-
CS100	90	49	16	-	-	6	9,5	68
CS125	90	49	16	-	-	6	9,5	68
CS160	90	49	16	-	-	6	9,5	68
CS200	90	49	16	-	-	6	9,5	68



Tip sklopke <i>Switch type</i>	□A	C	D1	D2	D3	D4	D5	□E	F	G	H
CS16	48	34,2	12	28	4,2	-	6,5	-	78	25	5
CS16H	65	38	12	28	4,2	-	6,5	-	78	25	5
CS25	48	34,2	12	28	4,2	-	6,5	-	78	25	5
CS25H	65	38	12	28	4,2	-	6,5	-	78	25	5
CS32	48	34,2	12	28	4,2	-	6,5	-	78	25	5
CS32H	65	38	12	28	4,2	-	6,5	-	78	25	5
CS40R	48	34,2	12	28	4,2	-	6,5	-	78	25	5
CS40RH	65	38	12	28	4,2	-	6,5	-	78	25	5
CS40	65	38	12	28	4,2	-	6,5	-	88	40	6
CS63	65	38	12	28	4,2	-	6,5	-	88	40	6
CS80	65	38	12	28	4,2	-	6,5	-	88	40	6
CS100	90	49	16	-	-	6	9,5	68	113,5	35	5
CS125	90	49	16	-	-	6	9,5	68	113,5	35	5
CS160	90	49	16	-	-	6	9,5	68	113,5	35	5
CS200	90	49	16	-	-	6	9,5	68	113,5	35	5

POSEBNE IZVEDBE *OPTIONAL EXTRAS*

KOD *CODE*

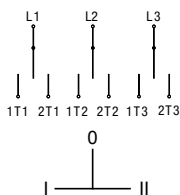
PREKLOPKA
CHANGEOVER



153

3-polna ili 4-polna preklopka s "0" položajem (I-0-II).

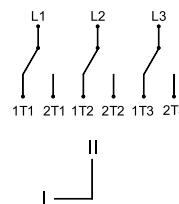
3-pole or 4-pole changeover with "0" position (I-0-II).



153D

3-polna ili 4-polna preklopka bez "0" položaja (I-II).

3-pole or 4-pole changeover without "0" position (I-II).



CS16	O	153
CS16H	O	153
CS25	O	153
CS25H	O	153
CS32	O	153
CS32H	O	153
CS40R	O	153
CS40RH	O	153
CS40	O	153
CS63	O	153
CS80	O	153

CS100	O	153
CS125	O	153
CS160	O	153
CS200	O	153

CS100	O	153D
CS125	O	153D
CS160	O	153D
CS200	O	153D

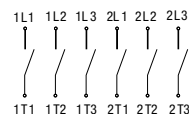
PARALELNI POGON DVIJE RASTAVNE SKLOPKE
TANDEM DRIVE OF TWO SWITCH-DISCONNECTORS



134

Paralelni pogon dvije rastavne sklopke (6-polna rastavna sklopka).
Moguća je izvedba i 8-polne rastavne sklopke (8P).

*Standard switch-disconnector with yellow front plate,
yellow escutcheon plate and red handle.*



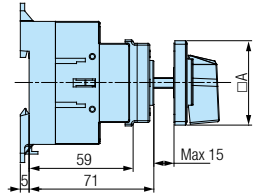
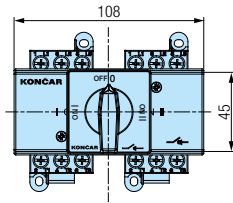
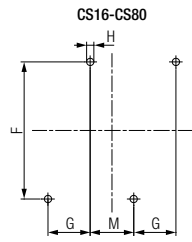
CS16	O	134
CS16H	O	134
CS25	O	134
CS25H	O	134
CS32	O	134
CS32H	O	134
CS40R	O	134
CS40RH	O	134
CS40	O	134
CS63	O	134
CS80	O	134

CS100	O	134
CS125	O	134
CS160	O	134
CS200	O	134

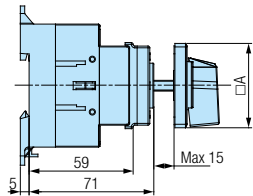
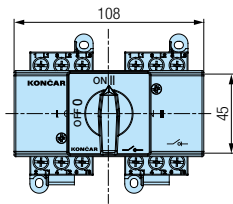
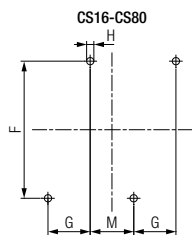
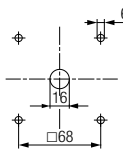
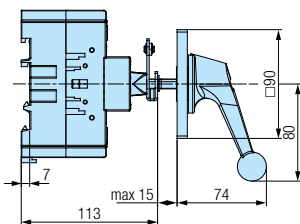
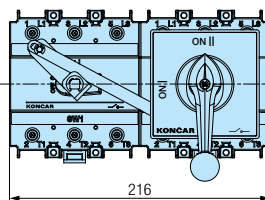
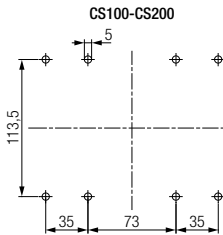
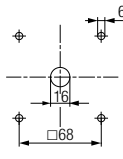
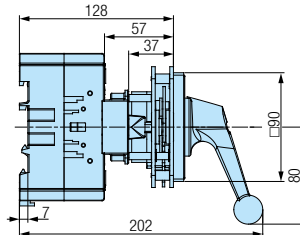
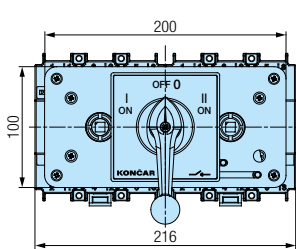
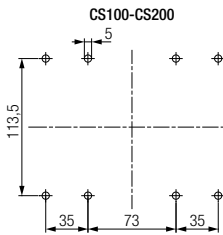
MJERNE SKICE *DIMENSIONAL DRAWINGS* (mm)

Plan bušenja / *Drilling plan*
Stražnji lim / *Rear plate*

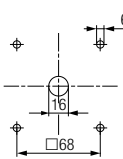
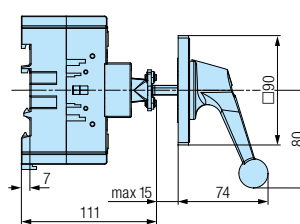
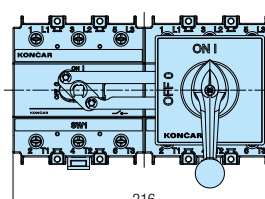
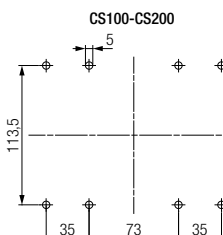
Plan bušenja / *Drilling plan*
Prednji lim / *Front plate*



Tip sklopke Switch type	□A	F	G	H	M
CS16	48	78	25	5	28
CS16H	65	78	25	5	28
CS25	48	78	25	5	28
CS25H	65	78	25	5	28
CS32	48	78	25	5	28
CS32H	65	78	25	5	28
CS40R	48	78	25	5	28
CS40RH	65	78	25	5	28
CS40	65	88	40	6	14
CS63	65	88	40	6	14
CS80	65	88	40	6	14



Tip sklopke Switch type	□A	F	G	H	M
CS16	48	78	25	5	28
CS16H	65	78	25	5	28
CS25	48	78	25	5	28
CS25H	65	78	25	5	28
CS32	48	78	25	5	28
CS32H	65	78	25	5	28
CS40R	48	78	25	5	28
CS40RH	65	78	25	5	28
CS40	65	88	40	6	14
CS63	65	88	40	6	14
CS80	65	88	40	6	14



POSEBNE IZVEDBE *OPTIONAL EXTRAS*

KOD *CODE*

PLASTIČNO KUĆIŠTE
PLASTIC CASING



24

Standardna rastavna sklopka sa žutom podlogom i crvenom ručicom

Standard switch with yellow escutcheon plate and red handle.

CS16	P	24
CS25	P	24
CS32	P	24
CS40R	P	24
CS40	P	24
CS63	P	24
CS80	P	24
CS100	P	24
CS125	P	24
CS160	P	24
CS200	P	24



15

Standardno se ugrađuje crvena svjetiljka (230V) desno dolje.
Mogući su i naponi 110 i 400V kao i zelena boja svjetiljke (potrebno definirati).
Na zahtjev ugrađujemo i drugu svjetiljku lijevo dolje.

*In a standard manner, red lamp (230V) is built in the right bottom corner.
Possible voltages are 110 and 400V and green lamp, too (please define).
On request second lamp can be built in the left bottom corner.*

CS16	P	15
CS25	P	15
CS32	P	15
CS40R	P	15
CS40	P	15
CS63	P	15
CS80	P	15
CS100	P	15
CS125	P	15
CS160	P	15
CS200	P	15



06 Zaključavanje samo u "0". / *Locking only in "0".*

23 Glavna sklopka / *Main switch*

25 Glavna sklopka ujedno i sklopka za nužno isklapanje. / *Main switch with emergency.*

	RUČICA HANDLE	ČEONA PLOČA COVER PLATE	KUĆIŠTE CASING
06	siva / grey	siva / grey	sivo / grey
23	crna / black	crna / black	sivo / grey
25	crvena / red	žuta / yellow	sivo / grey

CS16	P	06	23	25
CS25	P	06	23	25
CS32	P	06	23	25
CS40R	P	06	23	25
CS40	P	06	23	25
CS63	P	06	23	25
CS80	P	06	23	25
CS100	P	06	23	25
CS125	P	06	23	25
CS160	P	06	23	25
CS200	P	06	23	25



56 Zaključavanje samo u "0" (1-3 lokota). / *Locking only in "0" (1-3 padlocks).*

73 Glavna sklopka / *Main switch*

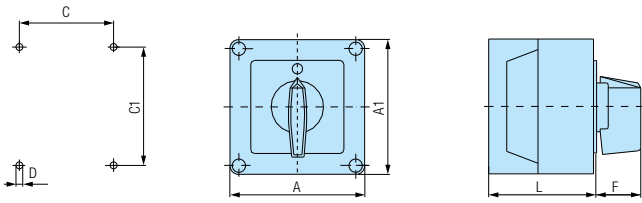
75 Glavna sklopka ujedno i sklopka za nužno isklapanje. / *Main switch with emergency.*

	RUČICA HANDLE	PODLOGA ESCUTCH. PLATE	KUĆIŠTE CASING	Y KOD / CODE
56	crna / black	bijela / white	sivo / grey	
	siva / grey	bijela / white	sivo / grey	20
73	crna / black	crna / black	sivo / grey	
75	crvena-žuta / red-yellow	žuta / yellow	sivo / grey	

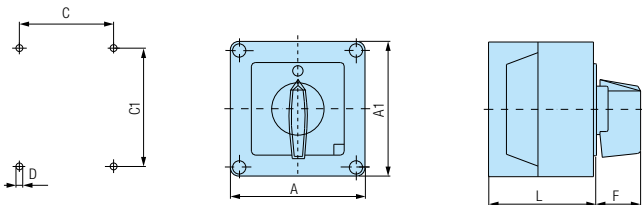
CS16	P	56	73	75
CS25	P	56	73	75
CS32	P	56	73	75
CS40R	P	56	73	75

MJERNE SKICE *DIMENSIONAL DRAWINGS* (mm)

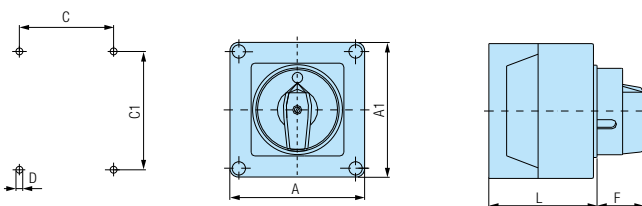
Plan bušenja / *Drilling plan*
 Stražnji lim / *Rear plate*



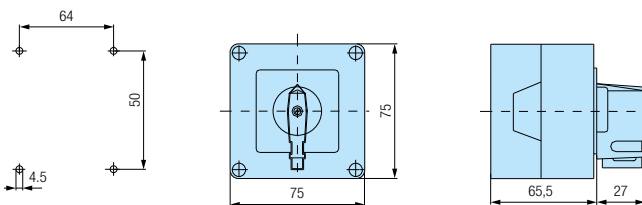
Tip sklopke <i>Switch type</i>	Tip kućišta <i>Casing size</i>	A	A1	C	C1	D	E	G
CS16 CS25 CS32 CS40R	110x110	110	110	83	98,4	4,5	32	85,5
CS40 CS63 CS80	125x175	125	175	112	146	5,5	32	84,3
CS100 CS125 CS160 CS200	215x295	210	290	160	240	5,5	41,5	147,5



Tip sklopke <i>Switch type</i>	Tip kućišta <i>Casing size</i>	A	A1	C	C1	D	E	G
CS16 CS25 CS32 CS40R	110x110	110	110	83	98,4	4,5	32	85,5
CS40 CS63 CS80	125x175	125	175	112	146	5,5	32	84,3
CS100 CS125 CS160 CS200	215x295	210	290	160	240	5,5	41,5	147,5



Tip sklopke <i>Switch type</i>	Tip kućišta <i>Casing size</i>	A	A1	C	C1	D	E	G
CS16 CS25 CS32 CS40R	110x110	110	110	83	98,4	4,5	38,5	85,5
CS40 CS63 CS80	125x175	125	175	112	146	5,5	38,5	84,3
CS100 CS125 CS160 CS200	215x295	210	290	160	240	5,5	49	147,5



PODLOGE *ESCUTCHEON PLATES*

PODLOGA "N" *ESCUTCHEON PLATE "N"*

GLAVNA SKLOPKA N 01	MAIN SWITCH N 02	HAUPTSCHALTER N 03	NUŽNO ISKLAPANJE N 04	EMERGENCY OFF N 05	NOT-AUS N 06	MOTOR N 14	MOTOR CONTROL N 15	PUMPA N 16	PUMP N 17
PUMPE N 18	GRIJANJE N 19	HEIZUNG N 20	HLADENJE N 21	VENTILATOR N 22	RASVJETA N 23	BIRAČ N 24	WAHLSCHALTER N 25	SELECTOR N 26	N 31

PREGLED POSEBNIH IZVEDBI PO STRANICAMA *OPTIONAL EXTRAS - REVIEW*

POSEBNA IZVEDBA <i>OPTIONAL EXTRA</i>	Stranica <i>Page</i>	Prednja ploča s natpisom <i>Front plate with title</i> (N)	POSEBNA IZVEDBA <i>OPTIONAL EXTRA</i>	Stranica <i>Page</i>	Prednja ploča s natpisom <i>Front plate with title</i> (N)
02	22	+	48D,56	18	
06	10	+	56	10	+
06D	10		57D	20	+
07	20	+	58D	20	+
08	20	+	63D	12	
09	16		65D	12	
10	16		67	16	
11	16		69	18	+
12	16		71	16	
15	22	+	72	16	
23	12	+	73	12	+
24	22	+	75	12	+
25	12	+	76	18	+
29D	14		77	18	+
29K	14		102	20	+
41D	14		108D	20	+
41K	14		134	24	+
47	14		153	24	+
48D	18		153D	24	+

SWITC DISCONNECTORS CS SERIES



www.LovatoKoncar.hr

LOVATO KONČAR d.o.o.
Borongajska cesta 81 b
10002 ZAGREB
HRVATSKA
Tel +385 (0)1 2369 243, 2369 203
prodaja@LovatoKoncar.hr
www.LovatoKoncar.hr



Follow us

The products described in this document are subject to updates or modifications at any time. The descriptions, technical and functional information, illustrations and instructions in the leaflet are to be considered as purely illustrative, and consequently have no contractual relevance. Remember also that the products themselves must be used by qualified personnel, in compliance with current plant engineering and installation standards, in order to avoid injury to persons or damage to property.